



WOMENS EVELYN SHORT SLEEVE BLOUSE RU569LS

This lightweight, transeasonal top is designed for comfort and style across varying climates. With a single-layer front and back, pleat-detail cuffs, and a curved hem.

DETAILS



EVELYN **BIZeco**

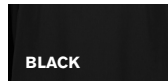
100% Recycled Polyester.

FABRIC CARE INSTRUCTION

- Wash before wear.
- Machine wash warm in gentle cycle. Wash and dry with like colours. Wash inside out.
- Do not bleach.
- Tumble dry low.
- Warm iron if needed.
- Can be dry cleaned.



COLOURS



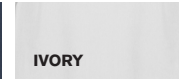
BLACK



NAVY



MINERAL BLUE



IVORY



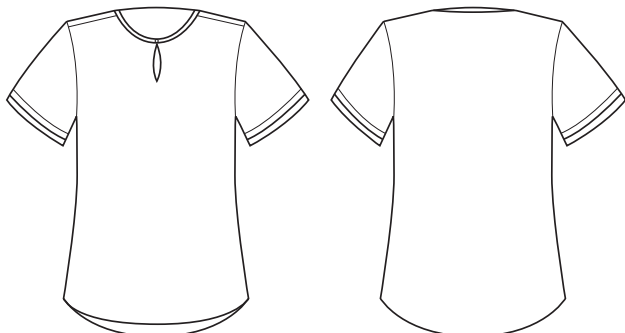
GARMENT MEASUREMENTS

SIZE	6	8	10	12	14	16	18	20	22	24	26	28	30
½ BUST (CM)	46.5	49	51.5	54	56.5	59	63.5	66	68.5	71	73.5	76	78.5

STYLE DETAILS

- Easy fit short sleeve blouse, designed to be relaxed through the body.
- Elastic loop on front button detail.
- Curved hemline, with longer back hem.
- Long sleeve and button up blouse styles also available.
- Mineral Blue coordinates with Biz Collection Memphis shirting range and City Polo range.

SPEC DRAWING



This garment is made from 100% recycled polyester resulting in the equivalent of 15 plastic bottles diverted for the Short Sleeve Shirt.