



WOMENS EVELYN LONG SLEEVE BLOUSE RU569LL

This lightweight, transeasonal top is designed for comfort and style across varying climates. With a single-layer front and back, pleat and button detail cuffs, and a curved hem.

DETAILS



EVELYN BIZECO

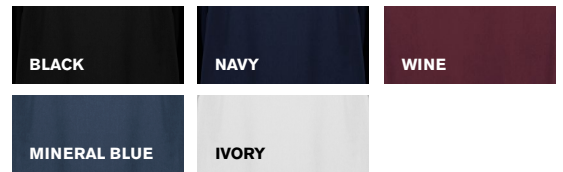
100% Recycled Polyester • UPF 50+

FABRIC CARE INSTRUCTION

- Wash before wear.
- Machine wash warm in gentle cycle. Wash and dry with like colours. Wash inside out.
- Do not bleach.
- Tumble dry low.
- Warm iron if needed.
- Can be dry cleaned.



COLOURS



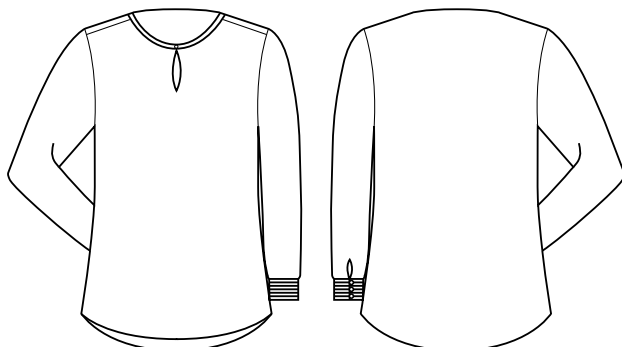
GARMENT MEASUREMENTS

SIZE	6	8	10	12	14	16	18	20	22	24	26	28	30
½ BUST (CM)	46.5	49	51.5	54	56.5	59	63.5	66	68.5	71	73.5	76	78.5

STYLE DETAILS

- Easy fit long sleeve blouse, designed to be relaxed through the body.
- Elastic loop on front button detail.
- Elastic loops on cuff buttons to allow sleeves to be pushed up.
- Curved hemline, with longer back hem.
- Short sleeve and button up blouse styles also available.
- Mineral Blue coordinates with Biz Collection Memphis shirting range and City polo range.

SPEC DRAWING



This garment is made from 100% recycled polyester resulting in the equivalent of 21 plastic bottles being diverted from landfill for the Long Sleeve Shirt.