



# WOMENS MELBOURNE COMFORT JACKET RJK265L

A timeless piece with lightweight filling that is perfect for the cooler months on the road or in the office. Soft brushed fabric provides a premium look and soft hand feel. The Melbourne Jacket is ideal for those after an alternative to Bonded Polar Fleece Jackets.

## DETAILS



### MELBOURNE

*Main* 45% Cotton 44% Polyester 11% Nylon, with water repellent finish suitable for light showers. *Note: DWR treatment will last up to 25 machine washes.*

*Lining* 100% Polyester

*Filling* 100% Polyester, light-weight 60gsm

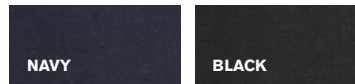
The perfect throw on and go jacket, warm enough for cool climates, with a breathable cotton blend shell. Soft peach finish.

### FABRIC CARE INSTRUCTIONS

- Colour may transfer when new, wash jacket before wearing. Machine wash in cold water, wash dark colours separately. Do not bleach. Steam iron if required. Tumble dry low. Dry cleanable.



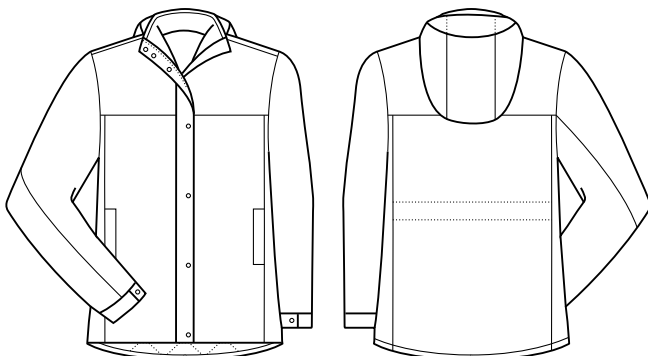
### COLOURS



### GARMENT MEASUREMENTS

SIZE	XS	S	M	L	XL	2XL
½ CHEST (CM)	48	51.5	55	58.5	62	65.5
½ WAIST (CM)	47	50.5	54	57.5	61	64.5
½ HEM (CM)	51	54.5	58	61.5	65	68.5
TOTAL LENGTH FROM HSP (CM)	70	71.5	73	74.5	76	77.5
CENTRE BACK LENGTH (CM)	76	77.5	79	80.5	82	83.5

## SPEC DRAWING



### STYLE DETAILS

- Detachable hood
- Storm cover over front zip
- Two side pockets and internal pocket
- Adjustable cuffs
- Embroidery zip and metal snaps
- Longline curved hem designed to sit under hips for extra coverage
- Adjustable waist cord for added shape through waist

### STYLE TIPS

- Can be worn with business lowers, chinos or jeans.
- Marketed as a dressy option to the traditional bonded polar fleece jackets
- Wear without hood for a more corporate look
- Light enough that it can be worn outside and inside

### RECOMMENDED INDUSTRY

- Suitable for wearers who do not require a 100% waterproof jacket, such as office workers and most sales representatives.