



MENS CITY FIT JACKET RJ401M

No suit piece speaks of sophistication quite like a tailored jacket. This classic two-button jacket, with its modern silhouette, is fully lined and features functional exterior and internal pockets. Pair it with matching suit pants for a razor-sharp look you'll love to wear to work.

DETAILS



RENEW **BIZECO**

77% Recycled Polyester 20% Viscose 3% Elastane

Fabric that has been engineered to be an easy-care, machine wash-and-wear fabric with minimal creasing. Made for ease and versatility for when you are on the go.

LINING Stretch Polyester

FABRIC CARE INSTRUCTION

Machine wash in warm water at a gentle setting. Wash with like colours. Wash inside out. Only non-chlorine bleach when needed. Hang to dry away from sunlight. Do not tumble dry. Iron at medium setting. Can be dry cleaned (P)



COLOURS



GARMENT MEASUREMENTS

SIZE	87	92	97	102	107	112	117	122	127	132	137	142
1/2 CHEST (CM)	47.5	50	52.5	55	57.5	60	62.5	65	67.5	70	72.5	75

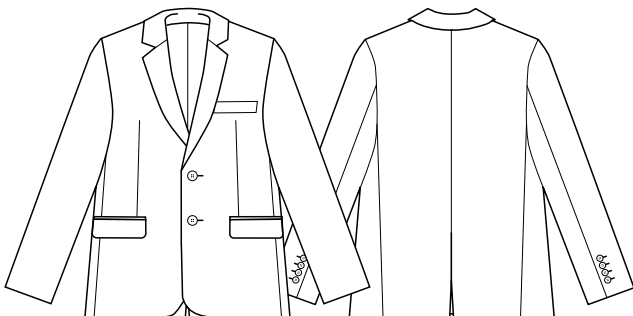
STYLE DETAILS

- City Fit – designed to provide some shape
- 2 button opening
- Two front jet pockets with flaps
- Center back vent
- Fully lined with internal pockets and an action pleat inside to allow for movement
- Contrast lining inside sleeve
- Internal zip for embroidery
- Cuff buttons are not functional

MATCH WITH

- Can be worn with casual lowers for a 'blazer' look or with matching suit lowers for a more corporate look.

SPEC DRAWING



This garment is made from 77% recycled polyester resulting in the equivalent of 26 plastic bottles being diverted from landfill.