



# WOMENS SINGLE BUTTON MID- LENGTH JACKET RJ401L

Look and feel smart with our single-button mid-length traditional jacket. This classic piece features a single button fastening and dramatically tailored lapels for a structured look. Pair it with the functional pencil skirt for a coordinated outfit you'll love.

## DETAILS



### RENEW BIZeCO

77% Recycled Polyester 20% Viscose 3% Elastane

Fabric that has been engineered to be an easy-care, machine wash-and-wear fabric with minimal creasing. Made for ease and versatility for when you are on the go.

**LINING** Stretch Polyester

### FABRIC CARE INSTRUCTION

Machine wash in warm water at a gentle setting. Wash with like colours. Wash inside out. Only non-chlorine bleach when needed.

Hang to dry away from sunlight. Do not tumble dry. Iron at medium setting. Can be dry cleaned (P)



### COLOURS

NAVY DUSK

PENCIL BLACK



### GARMENT MEASUREMENTS

SIZE	4	6	8	10	12	14	16	18	20	22	24	26	28	30
½ BUST (CM)	42.3	43.5	46	48.5	51	53.5	56	59.5	62	64.5	67	69.5	72	74.5
½ WAIST (CM)	37.8	39	41.5	44	46.5	49	51.5	55	57.5	60	62.5	65	67.5	70

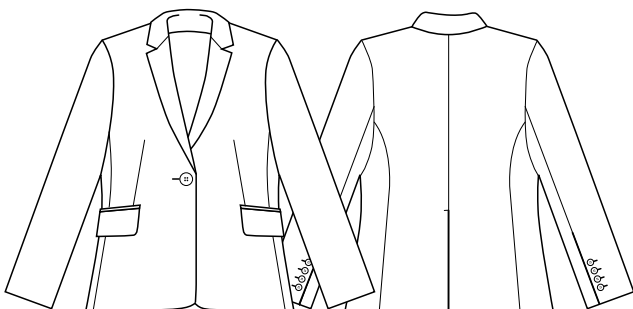
### STYLE DETAILS

- Single button opening
- Two front jet pockets with flaps
- Front waist darts for a more tailored look
- Fully lined with internal pockets
- Contrast lining inside sleeve
- Internal zip for embroidery
- Cuff buttons are not functional

### MATCH WITH

- Can be worn with casual lowers for a 'blazer' look or with matching suit lowers for a more corporate look

## SPEC DRAWING



This garment is made from 77% recycled polyester resulting in the equivalent of 22 plastic bottles being diverted from landfill.