



# WOMENS DOUBLE BREASTED LONGLINE JACKET RJ400L

Elevate your look with this double-breasted longline jacket, featuring a modern design that exudes effortless style. The streamlined silhouette includes a double button closure and functional angled jet pockets. Pair with jeans for a casual look or with it's matching lowers.

## DETAILS



### RENEW **BIZeCO**

77% Recycled Polyester 20% Viscose 3% Elastane

Fabric that has been engineered to be an easy-care, machine wash-and-wear fabric with minimal creasing. Made for ease and versatility for when you are on the go.

**LINING** Stretch Polyester

### FABRIC CARE INSTRUCTION

Machine wash in warm water at a gentle setting. Wash with like colours. Wash inside out. Only non-chlorine bleach when needed. Hang to dry away from sunlight. Do not tumble dry. Iron at medium setting. Can be dry cleaned (P)



### COLOURS



### GARMENT MEASUREMENTS

SIZE	4	6	8	10	12	14	16	18	20	22
½ BUST (CM)	42.3	43.5	46	48.5	51	53.5	56	59.5	62	64.5
½ WAIST (CM)	38.8	40	42.5	45	47.5	50	52.5	56	58.5	61

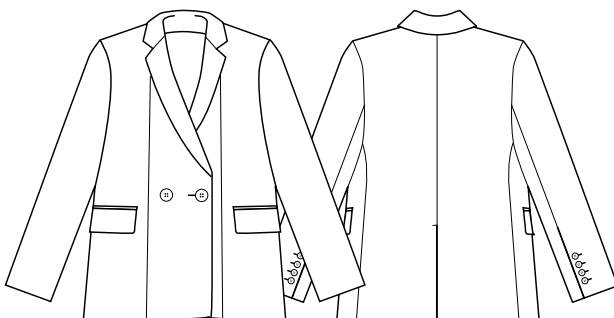
### STYLE DETAILS

- Designed to be a relaxed longline fit. Depending on your body shape, jacket may appear oversized.
- Double breasted closure at front
- Two front jet pockets with flaps
- Fully lined with internal pockets
- Contrast lining inside sleeve
- Single centre back vent
- Internal zip for embroidery
- Cuff buttons are functional, allowing for sleeves to be rolled up

### MATCH WITH

- Can be worn with casual lowers for a 'blazer' look or with matching suit lowers for a more corporate look.

## SPEC DRAWING



This garment is made from 77% recycled polyester resulting in the equivalent of 26 plastic bottles being diverted from landfill.