



WOMENS DOUBLE BREASTED LONGLINE JACKET RJ400L

Elevate your look with this double-breasted longline jacket, featuring a modern design that exudes effortless style. The streamlined silhouette includes a double button closure and functional angled jet pockets. Pair with jeans for a casual look or with its matching lowers.

DETAILS



RENEW **BIZECO**

77% Recycled Polyester 20% Viscose 3% Elastane

Fabric that has been engineered to be an easy-care, machine wash-and-wear fabric with minimal creasing. Made for ease and versatility for when you are on the go.

LINING Stretch Polyester

FABRIC CARE INSTRUCTION

Machine wash in warm water at a gentle setting. Wash with like colours. Wash inside out. Only non-chlorine bleach when needed. Hang to dry away from sunlight. Do not tumble dry. Iron at medium setting. Can be dry cleaned (P)



COLOURS

NAVY DUSK

PENCIL BLACK



GARMENT MEASUREMENTS

SIZE	4	6	8	10	12	14	16	18	20	22
½ BUST (CM)	42.3	43.5	46	48.5	51	53.5	56	59.5	62	64.5
½ WAIST (CM)	38.8	40	42.5	45	47.5	50	52.5	56	58.5	61

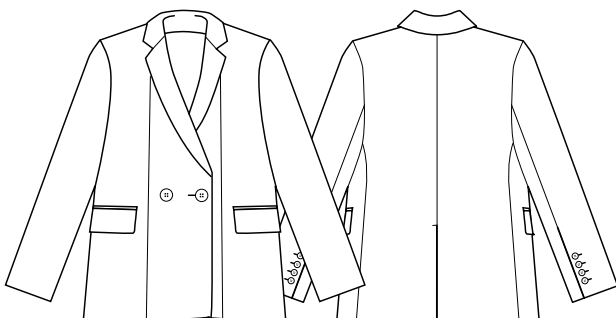
STYLE DETAILS

- Designed to be a relaxed longline fit. Depending on your body shape, jacket may appear oversized.
- Double breasted closure at front
- Two front jet pockets with flaps
- Fully lined with internal pockets
- Contrast lining inside sleeve
- Single centre back vent
- Internal zip for embroidery
- Cuff buttons are functional, allowing for sleeves to be rolled up

MATCH WITH

- Can be worn with casual lowers for a 'blazer' look or with matching suit lowers for a more corporate look.

SPEC DRAWING



This garment is made from 77% recycled polyester resulting in the equivalent of 26 plastic bottles being diverted from landfill.