



# MENS ADJUSTABLE WAIST STRAIGHT LEG PANT RGP408M

Secret stretch waist pants that deliver a sharp, tailored look while being exceptionally comfortable. The secret lies in the hidden elastic insert in the waistband. The flat front styling keeps things modern, while the classic straight leg works for various body types.

## DETAILS



### RENEW BIZECO

77% Recycled Polyester 20% Viscose 3% Elastane

Fabric that has been engineered to be an easy-care, machine wash-and-wear fabric with minimal creasing. Made for ease and versatility for when you are on the go.

### FABRIC CARE INSTRUCTION

Wash before wearing. Machine wash in warm water at a gentle setting. Wash with like colours. Only non-chlorine bleach when needed. Wash inside out. Hang to dry away from sunlight or tumble dry low to medium temperature. Iron at medium setting. Can be dry cleaned (P)



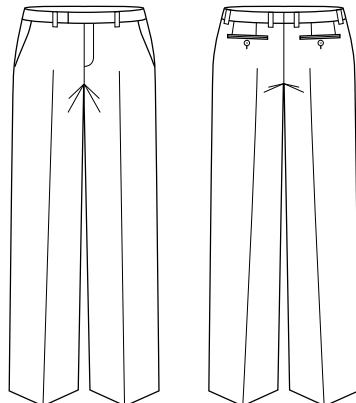
### COLOURS



### GARMENT MEASUREMENTS

SIZE	72R	77R	82R	87R	92R	97R
½ WAIST (CM)	36.5	39	41.5	44	46.5	49
½ WAIST STRETCHED CM	40	42.5	45	47.5	50	52.5
IN LEG (CM)	82	82	82	82	82	82
SIZE	102R	107R	112R	117R	122R	127R
½ WAIST (CM)	51.5	54	56.5	59	61.5	64
½ WAIST STRETCHED (CM)	55	57.5	60	62.5	65	67.5
IN LEG (CM)	82	82	82	82	82	82

## SPEC DRAWING



### STYLE DETAILS

- Flat-front styling
- Pressed creases
- Two angled front side pockets
- Hidden secret stretch waist, perfect for those in between sizes
- Six belt loops allowing belt to sit comfortably at waist
- Waistband with inbuilt internal shirt grips
- 5cm hem allowance for easy alterations

### MATCH WITH

- Pair with matching jacket for a sophisticated and co-ordinated suiting look

This garment is made from 77% recycled polyester resulting in the equivalent of 20 plastic bottles being diverted from landfill.