



WOMENS SCUBA PONTE MID-RISE PULL-ON PANT RGP304L

Made from a compact double knit stretch fabric that is soft against the skin. Our Scuba Ponte styles have been designed to seamlessly work with all Biz Corporates suiting ranges.

DETAILS



SCUBA PONTE **BIZECO**

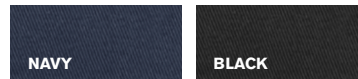
70% Viscose 25% Recycled Polyester 5% Elastane

Fabric care instruction:

- Easy-care, warm machine wash on gentle cycle. Wash with like colours, do not bleach, do not tumble dry. Cool iron if required.



COLOURS



GARMENT MEASUREMENTS

| SIZE | XXS | XS | S | M | L | XL | 2XL | 3XL |
|--------------|------|------|------|------|------|------|------|------|
| ½ WAIST (CM) | 27.5 | 30.5 | 33.5 | 36.5 | 39.5 | 42.5 | 46.5 | 49.5 |
| ½ HIP (CM) | 43 | 46 | 49 | 52 | 55 | 58 | 62 | 65 |
| IN LEG (CM) | 77 | 77 | 77 | 77 | 77 | 77 | 77 | 77 |

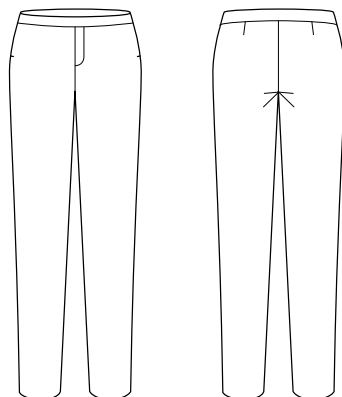
STYLE DETAILS

- Compact knit allows fabric to feel weightless and buttery-soft
- Smooth mat finish fabric. Compact knit eliminates any fabric transparency.
- Waistband is designed to look like a corporate pant, with mock fly front
- Tapered straight leg providing extra room through the knee, calf and hem opening
- Side seam pockets
- Designed to sit as a mid-rise pant
- No belt loops
- No hem allowance
- Full length intended to sit at or below ankle

STYLE TIPS

- Both black and navy colourways are designed to work with Biz Corporate suiting
- Style can be easily dressed up for a more professional look. Wear with a collared shirt and blazer for a polished corporate look.
- Style can also be worn with a soft blouse for a comfortable casual look, suitable for working from home
- As these styles are alpha size, you may wish to size up or down depending on how relaxed you want the pant to fit through the leg

SPEC DRAWING



This garment is made from 25% recycled polyester resulting in the equivalent of 8 plastic bottles being diverted from landfill.