



WOMENS SHORT SLEEVE DRESS

RD409L

A short sleeve dress that that is designed to a modern cut. The flattering cut also features two full length princess seams at the front to accentuate shape and add interest.

DETAILS



RENEW **BIZECO**

77% Recycled Polyester 20% Viscose 3% Elastane

Fabric that has been engineered to be an easy-care, machine wash-and-wear fabric with minimal creasing. Made for ease and versatility for when you are on the go.

LINING Stretch Polyester

FABRIC CARE INSTRUCTION

Wash before wearing. Machine wash in warm water at a gentle setting. Wash with like colours. Only non-chlorine bleach when needed. Wash inside out. Hang to dry away from sunlight or tumble dry low to medium temperature. Iron at medium setting. Can be dry cleaned (P)



COLOURS



GARMENT MEASUREMENTS

SIZE	4	6	8	10	12	14	16	18	20	22	24	26
½ BUST (CM)	42.8	44	46.5	49	51.5	54	56.5	60	62.5	65	67.5	70
½ HIP (CM)	46.8	48	50.5	53	55.5	58	60.5	64	66.5	69	71.5	74

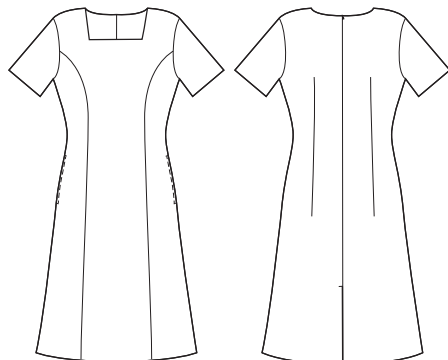
STYLE DETAILS

- Classic fit - designed to sit relaxed on the body
- Short sleeve styling
- Two functional pockets on side seams
- Centre back vent for ease of movement
- Front princess seams for shaping, better fit and movement across shoulders
- 5cm hem allowance for easy alterations
- Centre back zip closure
- Designed as a mid-length dress. Note models' height is 175cm (5'9")

MATCH WITH

- Dress is designed to be worn with or without a jacket. Square neckline gives a more modern and sophisticated look when worn with a jacket.

SPEC DRAWING



This garment is made from 77% recycled polyester resulting in the equivalent of 19 plastic bottles being diverted from landfill.