



# WOMENS SHORT SLEEVE DRESS RD409L

A short sleeve dress that that is designed to a modern cut. The flattering cut also features two full length princess seams at the front to accentuate shape and add interest.

## DETAILS



### RENEW **BIZECO**

77% Recycled Polyester 20% Viscose 3% Elastane  
Fabric that has been engineered to be an easy-care, machine wash-and-wear fabric with minimal creasing. Made for ease and versatility for when you are on the go.

**LINING** Stretch Polyester

### FABRIC CARE INSTRUCTION

Wash before wearing. Machine wash in warm water at a gentle setting. Wash with like colours. Only non-chlorine bleach when needed. Wash inside out. Hang to dry away from sunlight or tumble dry low to medium temperature. Iron at medium setting. Can be dry cleaned (P)



### COLOURS



### GARMENT MEASUREMENTS

| SIZE        | 4    | 6  | 8    | 10 | 12   | 14 | 16   | 18 | 20   | 22 |
|-------------|------|----|------|----|------|----|------|----|------|----|
| ½ BUST (CM) | 42.8 | 44 | 46.5 | 49 | 51.5 | 54 | 56.5 | 60 | 62.5 | 65 |
| ½ HIP (CM)  | 46.8 | 48 | 50.5 | 53 | 55.5 | 58 | 60.5 | 64 | 66.5 | 69 |

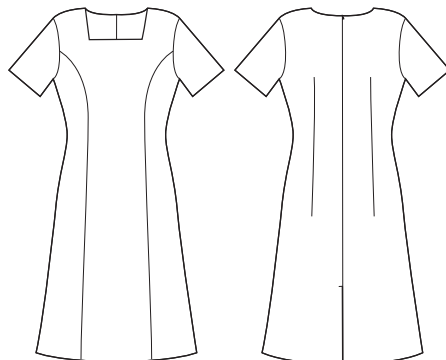
### STYLE DETAILS

- Classic fit - designed to sit relaxed on the body
- Short sleeve styling
- Two functional pockets on side seams
- Centre back vent for ease of movement
- Front princess seams for shaping, better fit and movement across shoulders
- 5cm hem allowance for easy alterations
- Centre back zip closure
- Designed as a mid-length dress. Note models' height is 175cm (5'9")

### MATCH WITH

- Dress is designed to be worn with or without a jacket. Square neckline gives a more modern and sophisticated look when worn with a jacket.

## SPEC DRAWING



This garment is made from 77% recycled polyester resulting in the equivalent of 19 plastic bottles being diverted from landfill.