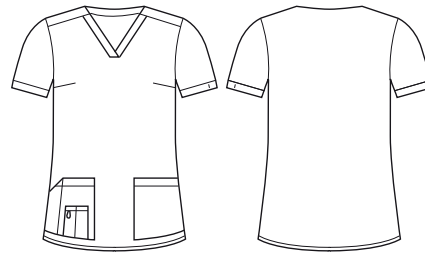




## AVERY WOMENS V-NECK EASY FIT SCRUB TOP

CST941LS



### COLOURS



### GARMENT MEASUREMENTS

SIZE	XS	S	M	L	XL	2XL	3XL	4XL	5XL
½ CHEST* (CM)	49	52.5	56	59.5	63	66.5	70	73.5	77
LENGTH FROM HSP (CM)	67.3	68.5	69.7	70.9	72.1	73.3	74.5	75.7	76.9

½ CHEST MEASURED 2.5CM BELOW UNDERARM

### STYLE F&B

- 5 pockets, no chest pocket
- All stress points bar-tacked
- Utility loops in self fabric in RHS pocket
- Bungee loop for swipe card/keys
- Easy fit top (not tapered through the waist) - true to sizing and perfect for most body shapes.
- Functional side splits to allow easy access into pant pockets and for movement
- Straight hem designed to sit just below bottom
- Modest neck-line

### FABRIC COMPOSITION

- 96% Polyester 4% Elastane, with wicking finish
- Easy-care, wash and wear performance fabric for the most demanding of environments
- Suitable for warmer climates
- Excellent Fade Resistance means 'blacks stay black' and colours stay vibrant for longer
- Soft against the skin - camisoles/t-shirts underneath is not required

### CARE DETAILS

- Machine washable at 60°C with like colours, inside out - to hold vibrancy of colours. Do not bleach, do not tumble dry. Cool iron if required, dry cleanable. Quick drying.

### MATCH WITH

- Wear with its matching scrub lowers available in slim leg and straight leg styles
- Can be worn with functional lowers - as an alternative tunic style top
- Match with round neck tailored fit scrub top CST942LS

