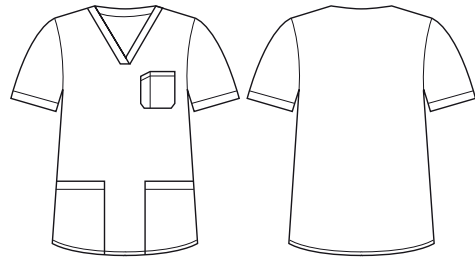




## HARTWELL UNISEX REVERSIBLE SCRUB TOP

CST150US



### COLOURS



### GARMENT MEASUREMENTS

SIZE	XXS	XS	S	M	L	XL	2XL	3XL	4XL	5XL	6XL
½ CHEST* (CM)	50	53	56	59	62	66	70	74	78	82	86
LENGTH FROM HSP (CM)	73	74.5	76	77.5	79	80	81	82	83	84	85

½ CHEST MEASURED 2.5CM BELOW UNDERARM

### STYLE F&B

- Reversible scrubs specifically designed for commercial laundromats
- Side splits
- Two front patch pockets and chest pocket

### FABRIC COMPOSITION

- 65% Polyester 35% Cotton, 160gsm plain weave.

### STANDARD CARE DETAILS

- Industrial laundry friendly. Domestic laundry at 60°C or lower. Tumble dry on low or line dry in shade. Warm iron if required.

### INDUSTRIAL WASHING DETAILS

- Tested at 95°C replicating standard industrial wash processes

\* **Midnight Navy and Black only available in XXS - 5XL. Please check with your Biz Care sales representative for latest stock levels.**