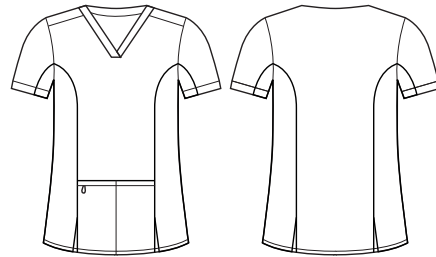




RILEY WOMENS V-NECK STRETCH SCRUB TOP

CST043LS



COLOURS



GARMENT MEASUREMENTS

| SIZE | XXS | XS | S | M | L | XL | 2XL | 3XL |
|----------------------|------|----|------|------|------|------|------|------|
| 1/2 CHEST* (CM) | 41.5 | 45 | 48.5 | 52 | 55.5 | 59 | 62.5 | 66 |
| LENGTH FROM HSP (CM) | 67 | 68 | 69 | 70.1 | 71.2 | 72.3 | 73.4 | 74.5 |

* 1/2 CHEST MEASURED 2.5CM BELOW UNDERARM

STYLE F&B

- 2 front deep pockets, no chest pocket
- All stress points bar-tacked
- Utility loops in self fabric in RHS pocket
- Bungee loop for swipe card/keys
- Tailored fit with princess seams to provide shaping from bust to waist
- Stretch side panels that run underarms down to hemline, provides extra movement and comfort
- Go up one size if in-between sizing
- Functional front side splits to allow easy access into pant pockets and for movement

FABRIC COMPOSITION

- Main: 52% Cotton 45% Polyester 3% Elastane
- Stretch side panels: 88% Polyester 12% Elastane with antibacterial treatment (Note stretch side panels: All colours with dyed to match stretch panels, expect Midnight Navy which has Navy stretch panels)
- Suitable for warmer climates due to high cotton content
- Soft against the skin - base layer not required

CARE DETAILS

- Machine washable at 60°C with like colours, inside out - to hold vibrancy of colours. Do not bleach, tumble dry low. Cool iron if required, dry cleanable.

MATCH WITH

- Wear with its matching scrub lowers CSP042LL or CSP047LL
- Mens style also available

