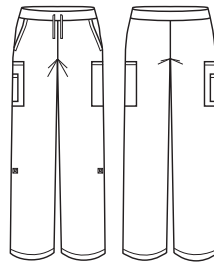




## AVERY WOMENS STRAIGHT LEG ROLL UP SCRUB PANT

CSP944LL



### COLOURS



### GARMENT MEASUREMENTS

SIZE	S	M	L	XL	2XL	3XL	4XL	5XL
½ WAIST RELAXED (CM)	38	41.75	45.5	49.25	53	56.75	60.5	64.25
½ WAIST STRETCHED (CM)	50.5	54.25	58	61.75	65.5	69.25	73	76.75
½ HIP* (CM)	54.48	58.23	61.98	65.73	69.48	73.23	76.98	80.73
IN LEG (CM)	76	76	76	76	76	76	76	76

½ HIP MEASURED 21CM FROM TOP OF WAISTBAND

### STYLE F&B

- 2 Side front pockets, and 3 cargo style pockets (no back pockets)
- Utility loops in RHS cargo pocket- no bungee cord on pants
- Cargo pockets only have a back gusset, front has been stitched down for a clean, corporate look
- Large pocket can fit iPad mini (pending cover thickness)
- Pant can be rolled up for wet areas
- Metal studs and tab keep rolled up pant in place - metal studs in antique nickel
- Elastic waist and draw string closure
- 2.5cm hem allowance

### FABRIC COMPOSITION

- 96% Polyester 4% Elastane, with wicking finish
- Easy-care, wash and wear performance fabric for the most demanding of environments
- Suitable for warmer climates
- Excellent Fade Resistance means 'blacks stay black' and colours stay vibrant for longer
- Soft against the skin- camisoles/t-shirts underneath is not required

### CARE DETAILS

- Machine washable at 60°C with like colours, inside out - to hold vibrancy of colours. Do not bleach, do not tumble dry. Cool iron if required, dry cleanable. Quick drying.

### MATCH WITH

- Can be worn with either of the 2 womens scrub tops
- Slim leg option also available - with no ¾ roll up
- Mix and match colours in bottoms and tops for a unique look

