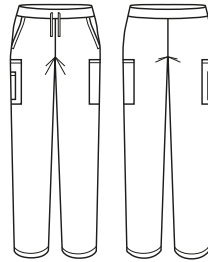


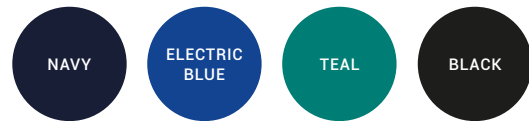


WOMENS SLIM LEG SCRUB PANT

CSP943LL



COLOURS



GARMENT MEASUREMENTS

SIZE	XXS	XS	S	M	L	XL	2XL	3XL
½ WAIST RELAXED (CM)	30.5	34.25	38	41.75	45.5	49.25	53	56.75
½ WAIST STRETCHED (CM)	43	46.75	50.5	54.25	58	61.75	65.5	69.25
½ HIP* (CM)	46.98	50.73	54.48	58.23	61.98	65.73	69.48	73.23

½ HIP MEASURED 21CM FROM TOP OF WAISTBAND

STYLE F&B

- 2 side hip pockets, and 3 cargo style pockets (no back pockets)
- Utility loops in RHS cargo pocket - no bungee cord on pants
- Slim leg pant - tapered from the knee down
- Cargo pockets only have a back gusset, front has been stitched down for a clean, corporate look
- Large pocket can fit iPad mini (pending cover thickness)
- Pant can not be rolled up, good option for those that do not want that feature
- Elastic waist and draw string closure
- 2.5cm hem allowance

FABRIC COMPOSITION

- 96% Polyester 4% Elastane, with antistatic finish and wicking finish
- Easy-care, wash and wear performance fabric for the most demanding of environments
- Suitable for warmer climates
- Excellent Fade Resistance means 'blacks stay black' and colours stay vibrant for longer
- Soft against the skin - camisoles/t-shirts underneath is not required

CARE DETAILS

- Machine wash cold with like colours, inside out - to hold vibrancy of colours. Do not bleach, hang to dry away from sunlight, do not tumble dry. Cool iron if required, dry cleanable. Quick drying - drip dry on hanger for iron-free drying.

MATCH WITH

- Can be worn with either of the 2 ladies scrub tops
- Straight leg option also available - with ¾ roll up
- Mix and match colours in bottoms and tops for a unique look

