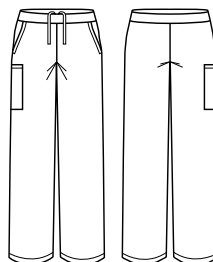




## UNISEX PINK SCRUB PANT

CSP102UL



### COLOURS



### GARMENT MEASUREMENTS

#### UNISEX FIT

Women may wish to size down for a fitted look.

SIZE	XXS	XS	S	M	L	XL	2XL	3XL	4XL	5XL	6XL
½ WAIST RELAXED (CM)	26.5	30	33.5	37	41	45	48.5	52	55.5	59	62.5
½ WAIST STRETCHED (CM)	43.5	47	50.5	54	58	62	65.5	69	72.5	76	79.5
IN LEG (CM)	82	82	82	82	82	82	82	82	82	82	82

### STYLE F&B

- 2 Side pockets at hip and double cargo pocket on RHS - no back pocket
- Straight leg shape
- Elastic waist and draw string closure
- 2.5cm hem allowance

### FABRIC COMPOSITION

- Made with AVERY fabric: 96% Polyester 4% Elastane, with wicking finish
- Easy-care, wash and wear performance fabric for the most demanding of environments
- Suitable for warmer climates
- Excellent Fade Resistance allowing colours to stay vibrant for longer
- Soft against the skin - camisoles/t-shirts underneath is not required

### CARE DETAILS

- Machine washable at 60°C with like colours, inside out - to hold vibrancy of colours. Do not bleach, do not tumble dry. Cool iron if required, dry cleanable. Quick drying.

A DOLLAR AMOUNT WILL BE DONATED  
PER PINK PRODUCT PURCHASED BY  
FASHION BIZ DISTRIBUTORS.

THE MORE PINK PRODUCTS YOU PURCHASE,  
THE MORE WE'LL BE DONATING TO  
NATIONAL BREAST CANCER FOUNDATION!