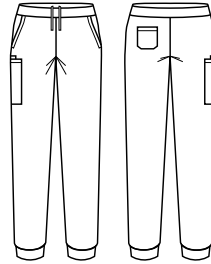


## RILEY MENS SLIM LEG JOGGER SCRUB PANT

CSP042ML



### COLOURS



### GARMENT MEASUREMENTS

SIZE	XS	S	M	L	XL	2XL	3XL	4XL	5XL
½ WAIST RELAXED (CM)	34	37	40	43	47	51	55	59	63
½ WAIST STRETCHED (CM)	44	47	50	53	57	61	65	69	73
IN LEG (CM)	80	80	80	80	80	80	80	80	80

### STYLE F&B

- Cargo pockets have a back gusset for extra capacity, front of cargo pocket has been stitched down for a clean look
- Side pockets in self fabric
- LHS back patch pocket
- Utility loops on RHS cargo pocket - no bungee cord on pants
- Tapered through the knee down, for a slim look
- Yoga style flat elastic waist band and draw string closure on the inside
- Dyed to match knit hem cuff
- Designed to finish at ankle

### FABRIC COMPOSITION

- Main: 52% Cotton 45% Polyester 3% Elastane
- Waist Band: 88% Polyester 12% Elastane with antibacterial treatment
- Hem: 88% Polyester 12% Elastane with antibacterial treatment, dyed to match
- Suitable for warmer climates
- Soft against the skin - base layer not required

### CARE DETAILS

- Machine washable at 60°C with like colours, inside out - to hold vibrancy of colours. Do not bleach, tumble dry low. Cool iron if required, dry cleanable.

### MATCH WITH

- Wear with its matching scrub top CST043MS
- Also available in straight leg pant style CSP047ML

