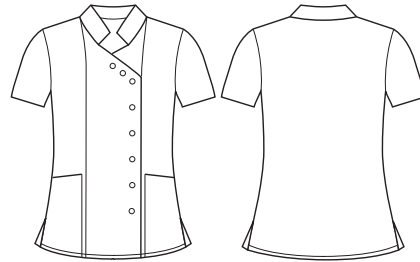




## WOMENS ESSENCE DENTIST/PHARMACY JACKET

CPT451LS

This jacket is a modern take, with its neat standing collar and streamlined short-sleeve silhouette, creating a smart look. The asymmetrical front offers extra coverage and a flattering fit, while the ring-snap fastener closure makes it easy to slip on and go.



### COLOURS



### GARMENT MEASUREMENTS

SIZE	XXS	XS	S	M	L	XL	2XL	3XL
½ CHEST* (CM)	42.5	46	49.5	53	56.5	60	63.5	67
LENGTH FROM HSP (CM)	68	69	70	71	72	73	74	75

½ CHEST MEASURED 2.5CM BELOW UNDERARM

### STYLE F&B

- Classic fit
- Asymmetrical front with ring-snap fastener closure
- Two front pockets on each side
- Mandarin collar with open neckline
- Darts on the back to add more shaping to body
- Bar tacked reinforcement on pockets and splits

### FABRIC COMPOSITION

- 77% Recycled Polyester 19% Viscose 4% Elastane

### CARE DETAILS

- Machine wash in warm water at a normal setting. Wash with like colours, inside out. Tumble dry on low. Cool iron if required.
- Fabric that has been engineered to be an easy-care fabric with a durable water repellent (DWR) finish.

### STYLE TIPS

- Suitable for beauty, pharmacy, dental and a range of other Care industries.
- Wear with any functional lower to complete the look.

This garment is made from 77% recycled polyester resulting in the equivalent of 17 plastic bottles being diverted from landfill.

