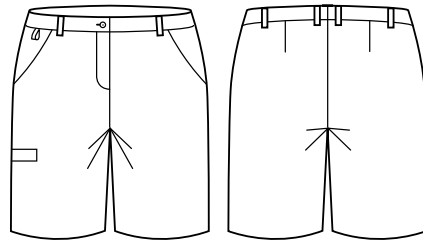




## WOMENS CARGO SHORT

CL957LS



### COLOURS



### GARMENT MEASUREMENTS

SIZE	4	6	8	10	12	14	16	18	20	22	24	26
½ WAIST RELAXED (CM)	32.25	33.5	36	38.5	41	43.5	46	49.5	52	54.5	57	59.5
½ WAIST STRETCHED (CM)	36.75	38	40.5	43	45.5	48	50.5	54	56.5	59	61.5	64
½ HIP* (CM)	45.25	46.5	49	51.5	54	56.5	59	62.5	65	67.5	70	72.5
IN LEG (CM)	27.5	27.5	27.5	27.5	27.5	27.5	27.5	27.5	27.5	27.5	27.5	27.5

½ HIP MEASURED 21CM FROM TOP OF WAISTBAND

### STYLE F&B

- Subtle elastic waist band that will stretch out when worn
- Elastic waist provides extra comfort and ease of movement by proving an extra ½ size when stretched
- Straight leg short, with side splits
- Designed to finish just above the knee
- 2x front angled side pockets, RHS welt pocket with Velcro closure
- No back pocket
- 3cm hem allowance due to side splits
- No inseam allowance
- 6 belt loops
- Key/swipe card loop on RHS pocket

### FABRIC COMPOSITION

- 64% Polyester 34% Viscose 2% Elastane
- Made from a lightweight plain weave fabric, it's breathable and comfortable making it perfect for all climates and health care roles

### CARE DETAILS

- Warm gentle machine wash 40°. Wash inside out with similar colours. Do not bleach, soak or tumble dry. Line dry in shade. Cool iron if required.

### MATCH WITH

- Mix and match with the other Functional lowers from the Biz Care range
- Also a great style for cleaners/hospitality in warmer climates who are after a durable lightweight option