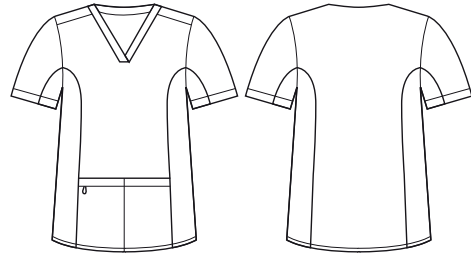




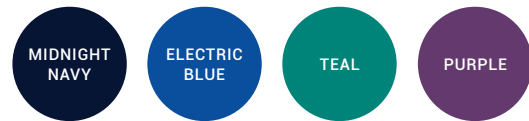
NEW

RILEY MENS V-NECK STRETCH SCRUB TOP

CST043MS



COLOURS



GARMENT MEASUREMENTS

SIZE	XS	S	M	L	XL	2XL	3XL	4XL	5XL
½ CHEST* (CM)	51.5	54.5	57.5	60.5	64.5	68.5	72.5	76.5	80.5
LENGTH FROM HSP (CM)	76.9	77.6	78.3	79	80	81	82	83	84

½ CHEST MEASURED 2.5CM BELOW UNDERARM

STYLE F&B

- 2 front deep pockets, no chest pocket
- All stress points bar-tacked
- Utility loops in self fabric in RHS pocket
- Bungee loop for swipe card/keys
- Tailored fit
- Stretch side panels that run underarms down to hemline, provides extra movement and comfort
- Go up one size if in-between sizing
- Straight hems

FABRIC COMPOSITION

- Main: 52% Cotton 45% Polyester 3% Elastane
- Stretch side panels: 88% Polyester 12% Elastane with antibacterial treatment (Note stretch side panels: All colours with dyed to match stretch panels, expect Midnight Navy which has Navy stretch panels)
- Suitable for warmer climates due to high cotton content
- Soft against the skin - base layer not required

CARE DETAILS

- Machine washable at 60°C with like colours, inside out - to hold vibrancy of colours. Do not bleach, tumble dry low. Cool iron if required, dry cleanable.

MATCH WITH

- Wear with its matching scrub lowers CSP042ML or CSP047ML
- Womens style also available

