

SIZE GUIDE

BODY MEASUREMENT GUIDE

Biz Collection apparel sizes are designed to fit average industry standards for the below body measurements. Please use this handy Body Measurement Guide to compare your own measurements and help you determine which size to order.

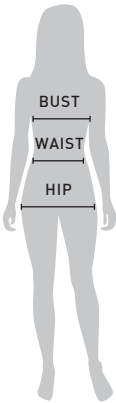
GARMENT TO GARMENT COMPARISON

An alternate method is to compare your own garment size to ours. You can do this by measuring the ½ chest of your garment (laid flat, measured 0.5in below the sleeve join, from side seam to side seam) and compare it to ours. Please refer to the individual garment measurements, shown on each style page, to determine your garment to garment size comparison.

LADIES

- BUST Measure under your arms around the fullest part of your chest.
- WAIST Measure around the narrowest part of your torso.
- HIP Stand with heels apart and measure around the fullest part of the hip and bottom area.

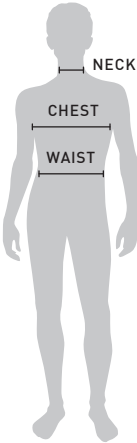
LADIES SIZE	0	2	4	6	8	10	12	14	16	18	20	22	24	26
ALPHA SIZE	XXS	XS	S		M		L		XL		2XL	3XL		
BUST (IN)	30.1	31.1	33.1	35	37	39	40.9	43.7	45.7	47.6	49.6	51.6	53.5	55.5
WAIST (IN)	23	24	26	28	29.9	31.9	33.9	36.6	38.6	40.6	42.5	44.5	46.5	48.4
HIP (IN)	34.1	35	37	39	40.9	42.9	44.9	47.6	49.6	51.6	53.5	55.5	57.5	59.4



MENS

- NECK Measure around the base of your neck with one finger between neck and tape measure.
- CHEST Measure under your arms around the fullest part of your chest.
- WAIST Measure around your natural waistline holding one finger between tape measure and body.

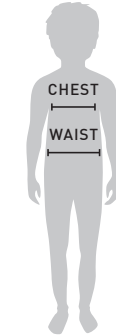
MENS TOP SIZE	XXS	XS	S	M	L	XL	2XL	3XL	4XL	5XL	6XL			
CHEST (IN)	34.3	36.2	38.2	40.2	42.1	44.1	46.1	48	50	52	53.9			
NECK (IN)	13.4	14.2	15	15.7	16.5	17.3	18.1	18.9	19.7	20.5	21.3			
MENS BOTTOM SIZE	28	30	32	34	36	38	40	42	44	46	48	50	52	54
ALPHA SIZE	XXS	XS	S	M	L	XL	2XL	3XL	4XL	5XL				
WAIST (IN)	28	30	32	34	36	38	40	42	44	46	48	50	52	54



KIDS

- CHEST Measure under your arms around the fullest part of your chest.
- WAIST Measure around your natural waistline holding one finger between tape measure and body.

KIDS SIZE	2	4	6	8	10	12	14	16
CHEST (IN)	22.8	23.6	25.2	26.8	28.3	29.9	31.5	33.9
WAIST (IN)	21.3	22	22.8	23.6	25.2	26.8	28.3	29.9



All measurements in this catalogue are approximate and are for reference only. Our size charts are a guide only and sizing may vary according to the style, fabric and fit of the actual garment. Waist specifications are measured at the natural waist which are to be considered even though garments will generally fit lower

GARMENT FITS

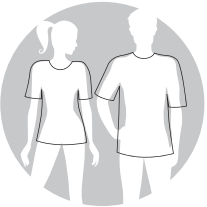
CASUAL WEAR



SLIM FIT
Shaped to the body. Get a semi-fitted look by buying one size up.



MODERN FIT
Follows the shape of the body with ease added for movement.



EASY FIT
Fit with extra ease for movement. Falls free from the body.

BUSINESS WEAR



MENS TAILORED FIT
Slightly tapered through the torso but still suitable for most body shapes.



MENS CLASSIC FIT
Relaxed modern fit with back yoke pleats for added ease.



MENS EASY FIT
Full, generous cut with central back pleat for maximum movement.



LADIES FITTED
Shaped and close fitting to the body. Stretch fabrics often used for comfort and ease of movement.

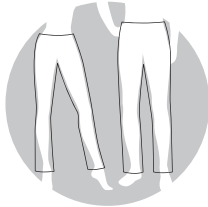


LADIES SEMI-FITTED
Gently shaped through the torso. Follows the contours of the body with added ease for movement.

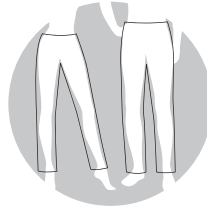


LADIES EASY FIT
Generous fit with a longer line. Straight through the torso with extra ease for maximum movement.

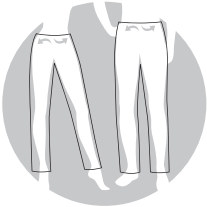
TROUSERS & SKIRTS



COMFORT FIT
Sits just below the natural waistline. Slight stretch in waistband. Ladies trousers follows the shape of the body with extra ease through the hip and thigh.



RELAXED FIT
Sits just below the natural waistline. Gently contours through the hip and thigh with allowance for ease of movement.



EASY FIT
Expandable waistband feature allows for added flexibility, extra comfort and movement.