

# BOULEVARD STYLE

ISSUE NO. 01

FEEL THE DIFFERENCE



**Boulevard**  
BY BIZ CORPORATES



FEEL THE DIFFERENCE

# CONTENTS



## LUXURY SHIRTING

### JUST FOR LADIES

- 02 **VERONA**
- 04 **SOLANDA**
- 06 **MAE** ADVATEXCOOL
- 07 **ABBY** ADVATEXCOOL
- 08 **LILA**
- 09 **SANDY** ADVATEXCOOL
- 10 **LEAH** ADVATEXCOOL
- 11 **ELLA** ADVATEXCOOL

### LADIES AND MENS CO-ORDINATES

- 12 **FIFTH AVENUE**
- 14 **BORDEAUX**
- 15 **VERMONT**
- 16 **LINDSEY** ADVATEX
- 18 **TONI** ADVATEX
- 20 **SPRINGFIELD**
- 22 **NEWPORT**
- 24 **CALAIS**
- 26 **HERNE BAY**
- 28 **HUDSON**

## POLISHED PIECES

### ACCESSORIES

- 30 **LADIES BELTS**
- 30 **LADIES SCARVES**
- 30 **MENS BELTS**
- 30 **MENS CUFFLINKS**

THIS STYLEBOOK EXCLUSIVELY  
FEATURES SHIRTS & KNITS  
FROM THE BOULEVARD  
RANGE BY BIZ CORPORATES.

FOR ADDITIONAL OPTIONS  
PLEASE VISIT  
[WWW.BIZCORPORATES.COM](http://WWW.BIZCORPORATES.COM)



**Boulevard**  
BY BIZ CORPORATES

WITH A FOCUS ON  
AUTHENTICITY AND  
QUALITY, THE BOULEVARD  
RANGE REVEALS UNIQUE  
SHIRTING THAT IS TRUE  
TO FIT AND FUNCTION.

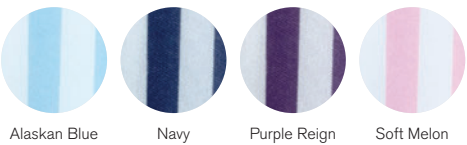
THE SHIRTING IS  
COMPLEMENTED BY AN  
EQUALLY SPECIAL RANGE  
OF ACCESSORIES WHICH  
ARE COORDINATED  
TO REFLECT A FINE  
SENSE OF DRESSING.





VERONA *Boulevard*

- 43610** LADIES LONG SLEEVE SHIRT
- 43612** LADIES SHORT SLEEVE SHIRT



- 100% Polyester, luxe touch
- Ladies semi-fitted design
- Concealed button front
- Inverted back pleat

| LADIES         | 0    | 2    | 4    | 6    | 8    | 10 | 12 | 14   | 16   | 18   | 20   | 22   |
|----------------|------|------|------|------|------|----|----|------|------|------|------|------|
| 1/2 CHEST (IN) | 17.6 | 18.1 | 19.1 | 20.1 | 21.1 | 22 | 23 | 24.4 | 25.4 | 26.4 | 27.4 | 28.3 |



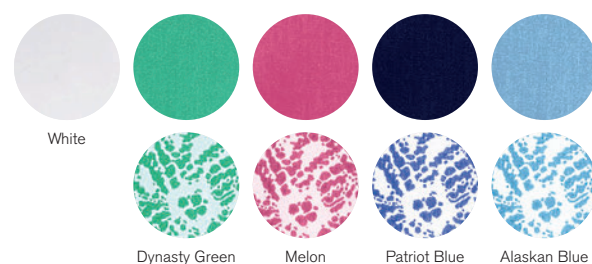


# SOLANDA Boulevard

PLAIN  
**40410** LADIES LONG SLEEVE SHIRT  
**40412** LADIES SHORT SLEEVE SHIRT

PRINT  
**40510** LADIES LONG SLEEVE SHIRT  
**40512** LADIES SHORT SLEEVE SHIRT

- 100% Polyester, soft touch
- Ladies semi-fitted open neck 'Y' front design
- Horizontal back yoke pleat feature
- Inverted back box pleat



| LADIES         | 0    | 2    | 4    | 6    | 8    | 10 | 12 | 14   | 16   | 18   | 20   | 22   |
|----------------|------|------|------|------|------|----|----|------|------|------|------|------|
| 1/2 CHEST (IN) | 17.6 | 18.1 | 18.9 | 20.1 | 21.1 | 22 | 23 | 24.4 | 25.4 | 26.4 | 27.4 | 28.3 |



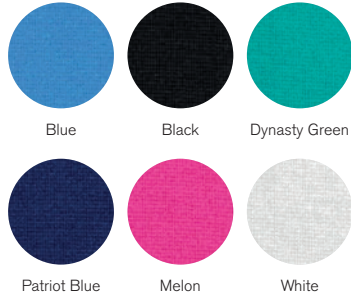




MAE ADVATEXCOOL

AC41412 LADIES SHORT SLEEVE KNIT TOP

- 95% Polyester 5% Elastane, stretch knit
- Advatex anti-bacterial with cool technology
- Ladies semi-fitted stretch knit design
- Curved 'V' neck and 'Y' feature front tab



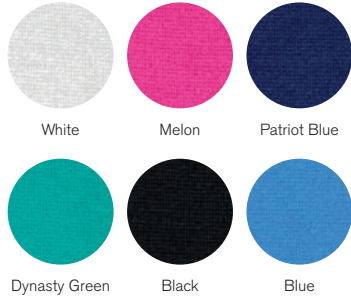
| LADIES         | 0    | 2    | 4    | 6    | 8    | 10   | 12   | 14   | 16   | 18   | 20   | 22   | 24   | 26   | 28   |
|----------------|------|------|------|------|------|------|------|------|------|------|------|------|------|------|------|
| 1/2 CHEST (IN) | 16.9 | 17.3 | 18.1 | 18.9 | 19.7 | 20.5 | 21.3 | 22.4 | 23.1 | 23.9 | 24.7 | 25.5 | 26.3 | 27.1 | 27.9 |



ABBY ADVATEXCOOL

AC41511 LADIES 3/4 SLEEVE KNIT TOP

- 95% Polyester 5% Elastane, stretch knit
- Advatex anti-bacterial with cool technology
- Ladies semi-fitted stretch knit design
- Feature keyhole front panelled tab



| LADIES         | 0    | 2    | 4    | 6    | 8    | 10   | 12   | 14   | 16   | 18   | 20   | 22   | 24   | 26   | 28   |
|----------------|------|------|------|------|------|------|------|------|------|------|------|------|------|------|------|
| 1/2 CHEST (IN) | 16.9 | 17.3 | 18.1 | 18.9 | 19.7 | 20.5 | 21.3 | 22.4 | 23.1 | 23.9 | 24.7 | 25.5 | 26.3 | 27.1 | 27.9 |

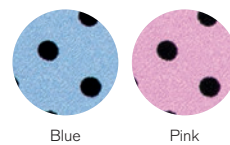




# LILA Boulevard

## 42312 LADIES SHORT SLEEVE TOP

- 100% Polyester, soft fine crepe spot design
- Ladies semi-fitted design
- Roll neck with keyhole button back neck



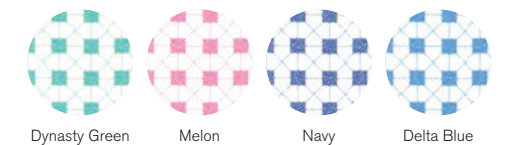
| LADIES         | 0    | 2    | 4    | 6    | 8    | 10 | 12 | 14   | 16   | 18   | 20   | 22   |
|----------------|------|------|------|------|------|----|----|------|------|------|------|------|
| 1/2 CHEST (IN) | 17.5 | 18.1 | 18.9 | 20.1 | 21.1 | 22 | 23 | 24.4 | 25.4 | 26.4 | 27.4 | 28.3 |



# SANDY ADVATEXCOOL

## AC42412 LADIES PLEAT KNIT TOP

- 95% Polyester 5% Elastane, link print
- Advatex anti-bacterial with cool technology
- Ladies semi-fitted open neck, stretch knit design
- Pleat front



| LADIES         | 0    | 2    | 4    | 6    | 8    | 10   | 12   | 14   | 16   | 18   | 20   | 22   | 24   | 26   | 28   |
|----------------|------|------|------|------|------|------|------|------|------|------|------|------|------|------|------|
| 1/2 CHEST (IN) | 16.9 | 17.4 | 18.4 | 19.4 | 20.4 | 21.3 | 22.3 | 23.7 | 24.7 | 25.7 | 26.7 | 27.6 | 28.6 | 29.6 | 30.6 |





## LEAH ADVATEXCOOL

### AC42912 LADIES BUTTON KNIT TOP

- 95% Polyester 5% Elastane, diamond print
- Advatex anti-bacterial with cool technology
- Ladies semi-fitted stretch knit design
- Round neck top with button front



Dynasty Green Melon Navy Delta Blue

| LADIES         | 0    | 2    | 4    | 6    | 8    | 10   | 12   | 14   | 16   | 18   | 20   | 22   | 24   | 26   | 28   |
|----------------|------|------|------|------|------|------|------|------|------|------|------|------|------|------|------|
| 1/2 CHEST (IN) | 16.9 | 17.4 | 18.4 | 19.4 | 20.4 | 21.3 | 22.3 | 23.7 | 24.7 | 25.7 | 26.7 | 27.6 | 28.6 | 29.6 | 30.6 |



## ELLA ADVATEXCOOL

### AC42812 LADIES PLEAT KNIT TOP

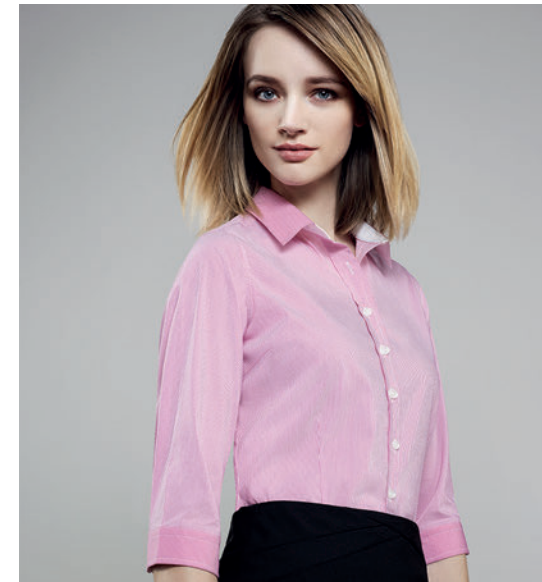
- 95% Polyester 5% Elastane, diamond print
- Advatex anti-bacterial with cool technology
- Ladies semi-fitted open neck, stretch knit design
- Pleat front



Dynasty Green Melon Navy Delta Blue

| LADIES         | 0    | 2    | 4    | 6    | 8    | 10   | 12   | 14   | 16   | 18   | 20   | 22   | 24   | 26   | 28   |
|----------------|------|------|------|------|------|------|------|------|------|------|------|------|------|------|------|
| 1/2 CHEST (IN) | 16.9 | 17.4 | 18.4 | 19.4 | 20.4 | 21.3 | 22.3 | 23.7 | 24.7 | 25.7 | 26.7 | 27.6 | 28.6 | 29.6 | 30.6 |



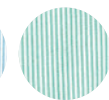


## FIFTH AVENUE

Boulevard



Alaskan Blue



Dynasty Green



Melon



Patriot Blue

- 40110** LADIES LONG SLEEVE SHIRT
- 40111** LADIES 3/4 SLEEVE SHIRT
- 40120** MENS LONG SLEEVE SHIRT
- 40112** MENS SHORT SLEEVE SHIRT

### LADIES

- 65% Cotton 33% Polyester 2% Elastane
- Yarn dyed fine stripe, soft textured **stretch** cotton blend
- Ladies semi-fitted design
- Contrast trim collar, inside yoke and inside cuff; grosgrain trim in inside collar stand, placket and inside cuff

### MENS

- 65% Cotton 33% Polyester 2% Elastane
- Yarn dyed fine stripe, soft textured **stretch** cotton blend
- Mens euro-fit with loose pocket
- Contrast trim with grosgrain trim in inside collar stand, placket and inside cuff
- Button down collar and double button cuff

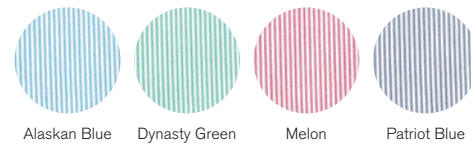
| LADIES         | 0    | 2    | 4    | 6    | 8    | 10   | 12   | 14   | 16   | 18   | 20   | 22   |
|----------------|------|------|------|------|------|------|------|------|------|------|------|------|
| 1/2 CHEST (IN) | 17.4 | 17.9 | 18.9 | 19.9 | 20.9 | 21.9 | 22.8 | 24.2 | 25.2 | 26.2 | 27.2 | 28.1 |
| MENS           | XS   | S    | M    | L    | XL   | 2XL  | 3XL  | 4XL  | 5XL  |      |      |      |
| NECK (IN)      | 14   | 14.8 | 15.6 | 16.3 | 17.1 | 17.9 | 18.7 | 19.5 | 20.3 |      |      |      |
| 1/2 CHEST (IN) | 19.9 | 20.9 | 21.9 | 22.8 | 24.2 | 25.4 | 27   | 28.5 | 30.1 |      |      |      |





## BORDEAUX Boulevard

**40114** LADIES 3/4 SLEEVE TOP  
**40112** LADIES SHORT SLEEVE TOP



- 65% Cotton 33% Polyester 2% Elastane
- Yarn dyed fine stripe, soft textured **stretch** cotton blend
- Ladies semi-fitted open neck design
- Trim fabric is cleverly applied to the placket, creating a contrast trim
- Cuff is cut on the bias for feature
- Inverted back yoke pleats and side splits for comfort

| LADIES         | 0    | 2    | 4    | 6    | 8    | 10   | 12   | 14   | 16   | 18   | 20   | 22   |
|----------------|------|------|------|------|------|------|------|------|------|------|------|------|
| 1/2 CHEST (IN) | 17.4 | 17.9 | 18.9 | 19.9 | 20.9 | 21.9 | 22.8 | 24.2 | 25.2 | 26.2 | 27.2 | 28.1 |

## VERMONT Boulevard

**40210** LADIES LONG SLEEVE SHIRT  
**40212** LADIES SHORT SLEEVE SHIRT  
**40220** MENS LONG SLEEVE SHIRT



### LADIES

- 60% Cotton 40% Polyester
- Yarn dyed wide stripe, soft textured **mechanical stretch** cotton blend
- Ladies semi-fitted open neck design
- Wider cuff width, contrast bias fabric inside cuff for cuff fold-back feature

### MENS

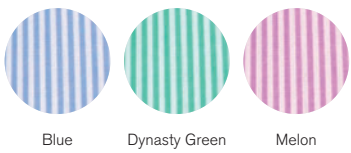
- 60% Cotton 40% Polyester
- Yarn dyed wide stripe, soft textured **mechanical stretch** cotton blend
- Mens euro-fit with loose pocket
- Spread collar and French cuff

| LADIES         | 0    | 2    | 4    | 6    | 8    | 10   | 12   | 14   | 16   | 18   | 20   | 22   |
|----------------|------|------|------|------|------|------|------|------|------|------|------|------|
| 1/2 CHEST (IN) | 17.4 | 17.9 | 18.9 | 19.9 | 20.9 | 21.9 | 22.8 | 24.2 | 25.2 | 26.2 | 27.2 | 28.1 |
| MENS           | XS   | S    | M    | L    | XL   | 2XL  | 3XL  | 4XL  | 5XL  |      |      |      |
| NECK (IN)      | 14   | 14.8 | 15.6 | 16.3 | 17.1 | 17.9 | 18.7 | 19.5 | 20.3 |      |      |      |
| 1/2 CHEST (IN) | 19.9 | 20.9 | 21.9 | 22.8 | 24.2 | 25.4 | 27   | 28.5 | 30.1 |      |      |      |





LINDSEY ADVATEX



- A41011** LADIES 3/4 SLEEVE SHIRT
- A41012** LADIES SHORT SLEEVE SHIRT
- A41022** MENS SHORT SLEEVE SHIRT

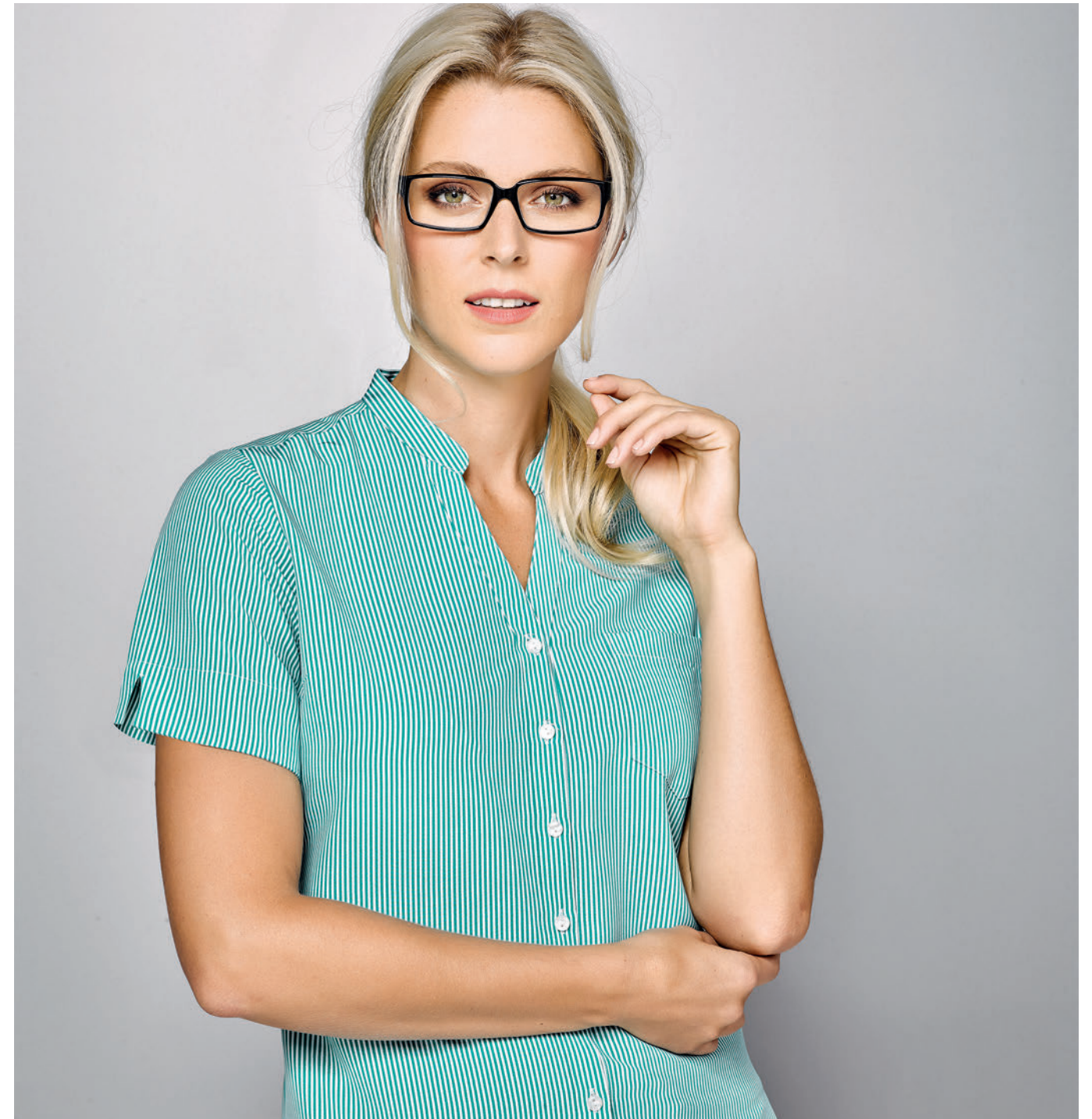
- LADIES

  - 60% Cotton 40% Polyester, yarn dyed stripe
  - Advatex anti-bacterial technology
  - Ladies semi-fitted open neck design
  - Front pocket and side splits
  - Inverted centre action back pleats
- MENS

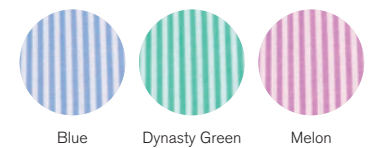
  - 60% Cotton 40% Polyester, yarn dyed stripe
  - Advatex anti-bacterial technology
  - Mens executive-fit with peaked collar
  - Front pocket and 2 action back pleats

| LADIES         | 0    | 2    | 4    | 6    | 8    | 10   | 12   | 14   | 16   | 18   | 20   | 22   | 24   | 26   | 28   |
|----------------|------|------|------|------|------|------|------|------|------|------|------|------|------|------|------|
| 1/2 CHEST (IN) | 17.4 | 17.9 | 18.9 | 19.9 | 20.9 | 21.9 | 22.8 | 24.2 | 25.2 | 26.2 | 27.2 | 28.1 | 29.1 | 30.1 | 31.1 |
| MENS           | XS   | S    | M    | L    | XL   | 2XL  | 3XL  | 4XL  | 5XL  |      |      |      |      |      |      |
| NECK (IN)      | 14   | 14.8 | 15.6 | 16.3 | 17.1 | 17.9 | 18.7 | 19.5 | 20.3 |      |      |      |      |      |      |
| 1/2 CHEST (IN) | 20.9 | 21.7 | 22.4 | 23.2 | 24.8 | 26   | 27.6 | 29.1 | 30.7 |      |      |      |      |      |      |





TONI ADVATEX



Blue Dynasty Green Melon

**A41312** LADIES SHORT SLEEVE TOP

- 100% Polyester, printed stripe
- Advatex anti-bacterial technology
- Ladies semi-fitted open neck design with front pocket
- Stand collar with inverted centre action back pleat
- Side seam splits & sleeve hem splits

| LADIES         | 0    | 2    | 4    | 6    | 8    | 10   | 12   | 14   | 16   | 18   | 20   | 22   | 24   | 26   | 28   |
|----------------|------|------|------|------|------|------|------|------|------|------|------|------|------|------|------|
| 1/2 CHEST (IN) | 17.4 | 17.9 | 18.9 | 19.9 | 20.9 | 21.9 | 22.8 | 24.2 | 25.2 | 26.2 | 27.2 | 28.1 | 29.1 | 30.1 | 31.1 |





SPRINGFIELD *Boulevard*



- 43411** LADIES 3/4 SLEEVE SHIRT
- 43412** LADIES SHORT SLEEVE SHIRT
- 43420** MENS LONG SLEEVE SHIRT
- 43422** MENS SHORT SLEEVE SHIRT

- LADIES

  - 100% Cotton, easy care
  - Ladies semi-fitted design
  - Open neck 'Y' front with left front pocket
  - Bias trim sleeve cuffs & inverted back pleat tucks
- MENS

  - 100% Cotton easy care
  - Mens executive-fit design
  - Button collar with left front pocket
  - Inverted back pleat tucks

| LADIES         | 0    | 2    | 4    | 6    | 8    | 10   | 12   | 14   | 16   | 18   | 20   | 22   |
|----------------|------|------|------|------|------|------|------|------|------|------|------|------|
| 1/2 CHEST (IN) | 17.4 | 17.9 | 18.9 | 19.9 | 20.9 | 21.9 | 22.8 | 24.2 | 25.2 | 26.2 | 27.2 | 28.1 |
| MENS           | XS   | S    | M    | L    | XL   | 2XL  | 3XL  | 4XL  | 5XL  |      |      |      |
| NECK (IN)      | 14   | 14.8 | 15.6 | 16.3 | 17.1 | 17.9 | 18.7 | 19.5 | 20.3 |      |      |      |
| 1/2 CHEST (IN) | 20.5 | 21.5 | 22.4 | 23.4 | 24.8 | 26.2 | 27.8 | 29.3 | 30.9 |      |      |      |





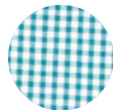
# NEWPORT *Boulevard*

- 42511** LADIES 3/4 SLEEVE SHIRT
- 42512** LADIES SHORT SLEEVE SHIRT
- 42520** MENS LONG SLEEVE SHIRT
- 42522** MENS SHORT SLEEVE SHIRT

## LADIES

- 65% Cotton 33% Polyester 2% Elastane
- Yarn dyed check, soft textured **stretch** cotton blend
- Ladies semi-fitted concealed front placket design
- Contrast stripe inside collar and cuff
- Contrast button and bar tack stitch

| LADIES         | 0    | 2    | 4    | 6    | 8    | 10   | 12   | 14   | 16   | 18   | 20   | 22   |
|----------------|------|------|------|------|------|------|------|------|------|------|------|------|
| 1/2 CHEST (IN) | 17.4 | 17.9 | 18.9 | 19.9 | 20.9 | 21.9 | 22.8 | 24.2 | 25.2 | 26.2 | 27.2 | 28.1 |
| MENS           | XS   | S    | M    | L    | XL   | 2XL  | 3XL  | 4XL  | 5XL  |      |      |      |
| NECK (IN)      | 14   | 14.8 | 15.6 | 16.3 | 17.1 | 17.9 | 18.7 | 19.5 | 20.3 |      |      |      |
| 1/2 CHEST (IN) | 20.9 | 21.7 | 22.4 | 23.2 | 24.8 | 26   | 27.6 | 29.1 | 30.7 |      |      |      |



Eden Green



French Navy



Purple Reign

## MENS

- 65% Cotton 33% Polyester 2% Elastane
- Yarn dyed check, soft textured **stretch** cotton blend
- Mens executive-fit design with front pocket
- Contrast stripe inside collar and cuff with grosgrain;
- Contrast button and bar tack stitch
- Inverted back pleats

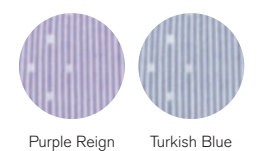






## CALAIS Boulevard

- 41721** LADIES 3/4 SLEEVE SHIRT
- 41722** LADIES SHORT SLEEVE SHIRT
- 41710** MENS LONG SLEEVE SHIRT
- 41712** MENS SHORT SLEEVE SHIRT



### LADIES

- 60% Cotton 40% Polyester, easy care
- Dobby textured cotton blend
- Ladies semi-fitted design
- Trim on pocket vent and down placket

### MENS

- 60% Cotton 40% Polyester, easy care
- Dobby textured cotton blend
- Mens executive-fit with front pocket
- Spread collar, inside placket and cuff trim, chevron outer fabric finish for cuff and yoke

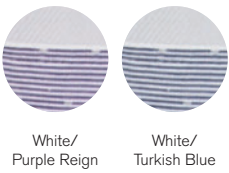
| LADIES         | 0    | 2    | 4    | 6    | 8    | 10   | 12   | 14   | 16   | 18   | 20   | 22   |
|----------------|------|------|------|------|------|------|------|------|------|------|------|------|
| 1/2 CHEST (IN) | 17.4 | 17.9 | 18.9 | 19.9 | 20.9 | 21.9 | 22.8 | 24.2 | 25.2 | 26.2 | 27.2 | 28.1 |
| MENS           | XS   | S    | M    | L    | XL   | 2XL  | 3XL  | 4XL  | 5XL  |      |      |      |
| NECK (IN)      | 14   | 14.8 | 15.6 | 16.3 | 17.1 | 17.9 | 18.7 | 19.5 | 20.3 |      |      |      |
| 1/2 CHEST (IN) | 20.9 | 21.7 | 22.4 | 23.2 | 24.8 | 26   | 27.6 | 29.1 | 30.7 |      |      |      |





# HERNE BAY Boulevard

- 41820** LADIES LONG SLEEVE SHIRT
- 41821** LADIES 3/4 SLEEVE SHIRT
- 41810** MENS LONG SLEEVE SHIRT



## LADIES

- 60% Cotton 40% Polyester, **double fold yarn**
- Textured cotton blend
- Ladies semi-fitted design
- Trim detail inside and outside collar stand
- Trim detail inside yoke, placket and inside cuff

## MENS

- 60% Cotton 40% Polyester, **double fold yarn**
- Textured cotton blend
- Mens executive-fit with front pocket
- Trim detail inside and outside collar stand
- Trim detail inside yoke, placket and inside cuff
- Spread collar, 2 button adjustable cuff

| LADIES         | 0    | 2    | 4    | 6    | 8    | 10   | 12   | 14   | 16   | 18   | 20   | 22   |
|----------------|------|------|------|------|------|------|------|------|------|------|------|------|
| 1/2 CHEST (IN) | 17.4 | 17.9 | 18.9 | 19.9 | 20.9 | 21.9 | 22.8 | 24.2 | 25.2 | 26.2 | 27.2 | 28.1 |
| MENS           | XS   | S    | M    | L    | XL   | 2XL  | 3XL  | 4XL  | 5XL  |      |      |      |
| NECK (IN)      | 14   | 14.8 | 15.6 | 16.3 | 17.1 | 17.9 | 18.7 | 19.5 | 20.3 |      |      |      |
| 1/2 CHEST (IN) | 20.9 | 21.7 | 22.4 | 23.2 | 24.8 | 26   | 27.6 | 29.1 | 30.7 |      |      |      |

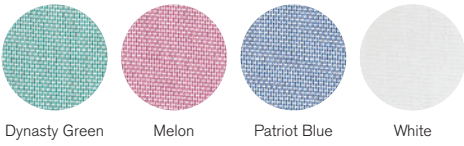






HUDSON *Boulevard*  
BY THE CORPORATION

- 40310** LADIES LONG SLEEVE SHIRT  
**40311** LADIES 3/4 SLEEVE SHIRT  
**40320** MENS LONG SLEEVE SHIRT  
**40322** MENS SHORT SLEEVE SHIRT



LADIES

- 100% Cotton, yarn dyed dobby fabric
- Ladies semi-fitted open neck 'Y' front design
- Contrast fabric inside cuff
- Tonal contrast button stitch and hole
- Inverted pleat in back yoke for comfort

MENS

- 100% Cotton, yarn dyed dobby fabric
- Mens executive-fit design with spread collar
- Contrast fabric inside cuff, loose pocket
- Tonal contrast button stitch and hole
- Inverted pleat in back yoke for comfort

| LADIES         | 0    | 2    | 4    | 6    | 8    | 10   | 12   | 14   | 16   | 18   | 20   | 22   |
|----------------|------|------|------|------|------|------|------|------|------|------|------|------|
| 1/2 CHEST (IN) | 17.4 | 17.9 | 18.9 | 19.9 | 20.9 | 21.9 | 22.8 | 24.2 | 25.2 | 26.2 | 27.2 | 28.1 |
| MENS           | XS   | S    | M    | L    | XL   | 2XL  | 3XL  | 4XL  | 5XL  |      |      |      |
| NECK (IN)      | 14   | 14.8 | 15.6 | 16.3 | 17.1 | 17.9 | 18.7 | 19.5 | 20.3 |      |      |      |
| 1/2 CHEST (IN) | 20.9 | 21.7 | 22.4 | 23.2 | 24.8 | 26   | 27.6 | 29.1 | 30.7 |      |      |      |







# POLISHED PIECES

ACCESSORISE YOUR LOOK



## SCARVES

- 99000 LADIES MONOTONE KNITTED SCARF
- 99001 LADIES TWO TONE SCARF



## TIES

- 99104 MENS SLIM TIE
- 99100 MENS SPOT TIE
- 99103 MENS WIDE CONTRAST STRIPE TIE
- 99102 MENS SINGLE CONTRAST STRIPE TIE
- 99101 MENS SELF STRIPE TIE

## LEATHER BELTS



- 99200 LADIES REVERSIBLE BELT



- 99300 MENS REVERSIBLE BELT

## CUFFLINKS



- 99400 CUFFLINKS

FOR MORE DETAILS VISIT [WWW.BIZCORPORATES.COM](http://WWW.BIZCORPORATES.COM)



# LADIES BODY MEASUREMENT GUIDE

FIND THE RIGHT FIT FOR YOUR BODY TYPE WITH OUR MEASUREMENT GUIDE



### HOW TO MEASURE

For an accurate body measurement, please keep the tape measure taut.

#### A. BUST

Measure under your arms and across shoulder blades, around the fullest part of your chest. Hold one finger between body and tape.

#### B. WAIST

Measure around your natural waistline while holding one finger between body and tape.

### STYLE FITS

Our shirts and are available in fits to suit all body types.



#### FITTED

Shaped and close fitting to the contours of the body.



#### SEMI-FITTED

Gently shaped through the torso. Follows the contours of the body.



#### EASY FIT

Generous fit with a longer line. Straight through the torso.

### SIZE CONVERSIONS

Please choose the size closest to your own body measurements.

#### Standard Sizing

|       | AUS/NZ | CA/US | AUS/NZ | CA/US | AUS/NZ | CA/US | AUS/NZ | CA/US | AUS/NZ | CA/US | AUS/NZ | CA/US | AUS/NZ | CA/US |
|-------|--------|-------|--------|-------|--------|-------|--------|-------|--------|-------|--------|-------|--------|-------|
|       | 4      | 0     | 6      | 2     | 8      | 4     | 10     | 6     | 12     | 8     | 14     | 10    | 16     | 12    |
|       | XXS    |       | XS     |       | XS - S |       | S      |       | M      |       | L      |       | L - XL |       |
|       | cm     | in    | cm     | in    | cm     | in    | cm     | in    | cm     | in    | cm     | in    | cm     | in    |
| Bust  | 76.5   | 30    | 79     | 31    | 84     | 33    | 89     | 35    | 94     | 37    | 99     | 39    | 104    | 41    |
| Waist | 58.5   | 23    | 61     | 24    | 66     | 26    | 71     | 28    | 76     | 30    | 81     | 32    | 86     | 34    |

#### Plus Sizing

|       | AUS/NZ | CA/US | AUS/NZ | CA/US | AUS/NZ | CA/US | AUS/NZ | CA/US |  |  |
|-------|--------|-------|--------|-------|--------|-------|--------|-------|--|--|
|       | 18     | 14    | 20     | 16    | 22     | 18    | 24     | 20    |  |  |
|       | XL     |       | 2XL    |       | 3XL    |       | 4XL    |       |  |  |
|       | cm     | in    | cm     | in    | cm     | in    | cm     | in    |  |  |
| Bust  | 111    | 44    | 116    | 46    | 121    | 48    | 126    | 50    |  |  |
| Waist | 93     | 37    | 98     | 39    | 103    | 41    | 108    | 43    |  |  |
|       | AUS/NZ | CA/US | AUS/NZ | CA/US | AUS/NZ | CA/US | AUS/NZ | CA/US |  |  |
|       | 26     | 22    | 28     | 24    | 30     | 26    | 32     | 28    |  |  |
|       | 5XL    |       |        |       |        |       |        |       |  |  |
|       | cm     | in    | cm     | in    | cm     | in    | cm     | in    |  |  |
| Bust  | 131    | 52    | 136    | 54    | 141    | 56    | 146    | 57    |  |  |
| Waist | 113    | 45    | 118    | 47    | 123    | 49    | 128    | 50    |  |  |

# MENS BODY MEASUREMENT GUIDE

FIND THE RIGHT FIT FOR YOUR BODY TYPE WITH OUR MEASUREMENT GUIDE



### HOW TO MEASURE

For an accurate body measurement, please keep the tape measure taut.

#### A. NECK

Measure around the middle of your neck at collar level, keeping the tape loose to make allowance for comfort.

#### B. CHEST

Measure under your arms and across shoulder blades, around the fullest part of your chest. Hold one finger between body and tape.

#### C. WAIST

Measure around your natural waistline while holding one finger between body and tape. Measure over shirt at position your pants would normally sit.

### STYLE FITS

Our shirts and are available in fits to suit all body types.



#### EURO FIT

Slightly tapered through the torso, fitting to the contours of the body.



#### EXECUTIVE FIT

Gently shaped through the torso. Relaxed modern fit.

### SIZE CONVERSIONS

Please choose the size closest to your own body measurements.

#### Shirts

|       | AUS/NZ  | CA/US | AUS/NZ  | CA/US | AUS/NZ  | CA/US | AUS/NZ  | CA/US | AUS/NZ  | CA/US |  |
|-------|---------|-------|---------|-------|---------|-------|---------|-------|---------|-------|--|
|       | XS      |       | S       |       | M       |       | L       |       | XL      |       |  |
|       | cm      | in    | cm      | in    | cm      | in    | cm      | in    | cm      | in    |  |
| Neck  | 35 - 36 | 14    | 37 - 38 | 15    | 39 - 40 | 15.5  | 41 - 42 | 16.5  | 43 - 44 | 17    |  |
| Chest | 87      | 34    | 92      | 36    | 97      | 38    | 102     | 40    | 107     | 42    |  |
|       | AUS/NZ  | CA/US | AUS/NZ  | CA/US | AUS/NZ  | CA/US | AUS/NZ  | CA/US |         |       |  |
|       | 2XL     |       | 3XL     |       | 4XL     |       | 5XL     |       |         |       |  |
|       | cm      | in    | cm      | in    | cm      | in    | cm      | in    |         |       |  |
| Neck  | 45 - 46 | 18    | 47 - 48 | 19    | 49 - 50 | 19.5  | 51 - 52 | 20.5  |         |       |  |
| Chest | 117     | 46    | 122     | 48    | 127     | 50    | 132     | 52    |         |       |  |

#### GARMENT TO GARMENT COMPARISON

An alternate method is to compare your own garment size to ours. You can do this by measuring the ½ chest of your garment (laid flat, measured 1cm below the sleeve join, from side seam to side seam) and compare it to ours. Please refer to the individual garment measurements, shown on each style page, to determine your garment to garment size comparison.

All measurements in this catalogue are approximate and are for reference only. Our size charts are a guide only and sizing may vary according to the style, fabric and fit of the actual garment.



# CORPORATE STYLING

— LET US THREAD YOUR TEAM OR STAFF WITH A WINNING LOOK —