



BIZ CORPORATES
aims to make
dressing for work
as easy as possible
with a range of well
considered and
design focused
corporate wear.

Try on the
BIZ CORPORATES
range today and
feel the difference.

TIMELESS SILHOUETTES
BOULEVARD BY BIZ CORPORATES

02.



INSPIRED STYLING
WITH OUR COORDINATED RANGE

24.



LUXE KNITS //
POWER OF PATTERN
ROCOCO BY BIZ CORPORATES

44.



TRANS-SEASONAL STYLE
COMFORT WOOL STRETCH

54.



CLASSIC APPEAL
COOL STRETCH PLAIN

70.



WALK THE LINE
COOL STRETCH PINSTRIPE

90.



REDEFINING HEALTHWEAR
BIZ CORPORATES WITH ADVATEX

98.



TIMELESS SILHOUETTES

Although shirts are considered a wardrobe staple, the new **Boulevard** range is anything but basic, with a colour and range story sure to impress.

NEWPORT

LADIES SHORT SLEEVE SHIRT

Code **42512** **NEW**

Colours **Eden Green, French Navy, Purple Reign**

Sizes **4 - 26**

Featured in Eden Green
with 24014 Chevron Skirt

LADIES 3/4 SLEEVE SHIRT

Code **42511** **NEW**

Colours **Eden Green, French Navy, Purple Reign**

Sizes **4 - 26**

Featured in Purple Reign
with 14017 Slim Leg Pant



MENS SHORT SLEEVE SHIRT

Code **42522** **NEW**

Colours **Eden Green, French Navy, Purple Reign**

Sizes **XS - 5XL**

Featured in French Navy with 74012 Flat Front Pant,
99300 Leather Reversible Belt

MENS LONG SLEEVE SHIRT

Code **42520** **NEW**

Colours **Eden Green, French Navy, Purple Reign**

Sizes **XS - 5XL**

Featured in Eden Green with 74012 Flat Front Pant,
99102 Single Contrast Stripe Tie, 99300 Leather Reversible Belt





LILA

LADIES SHORT SLEEVE TOP
Code **42312 NEW**
Colours **Blue, Pink**
Sizes **4 - 26**
Featured in Pink with 14017 Slim Leg Pant



OLIVER

MENS SHORT SLEEVE POLO
Code **42622 NEW**
Colours **Eden Green, French Navy, Purple Reign**
Sizes **XS - 5XL**
Featured in French Navy



CALAIS

LADIES 3/4 SLEEVE SHIRT

Code **41721**

Colours **Turkish Blue, Purple Reign**

Sizes **4 - 26**

Featured in Purple Reign with 14017 Slim Leg Pant

LADIES SHORT SLEEVE SHIRT

Code **41722**

Colours **Turkish Blue, Purple Reign**

Sizes **4 - 26**

Featured in Turkish Blue with 24014 Chevron Skirt



MENS SHORT SLEEVE SHIRT

Code **41712**

Colours **Turkish Blue, Purple Reign**

Sizes **XS - 5XL**

Featured in Purple Reign with 74012 Flat Front Pant,
99300 Leather Reversible Belt

MENS LONG SLEEVE SHIRT

Code **41710**

Colours **Turkish Blue, Purple Reign**

Sizes **XS - 5XL**

Featured in Turkish Blue with 74012 Flat Front Pant,
99104 Slim Tie, 99300 Leather Reversible Belt



HERNE BAY

LADIES 3/4 SLEEVE SHIRT

Code **41821**
Colours **White/Turkish Blue,**
White/Purple Reign
Sizes **4 - 26**

Featured in White/Purple Reign with
24014 Chevron Skirt

LADIES LONG SLEEVE SHIRT

Code **41820**
Colours **White/Turkish Blue,**
White/Purple Reign
Sizes **4 - 26**

Featured in White/Turkish Blue with
14017 Slim Leg Pant

MENS LONG SLEEVE SHIRT

Code **41810**
Colours **White/Turkish Blue,**
White/Purple Reign
Sizes **XS - 5XL**

Featured in White/Turkish Blue with 74012 Flat Front
Pant, 99102 Single Contrast Stripe Tie,
99300 Leather Reversible Belt



FIFTH AVENUE

LADIES LONG SLEEVE SHIRT

Code **40110**

Colours **Patriot Blue, Melon, Alaskan Blue, Dynasty Green**

Sizes **4 - 26**

Featured in Alaskan Blue with 14017 Slim Leg Pant

LADIES 3/4 SLEEVE SHIRT

Code **40111**

Colours **Patriot Blue, Melon, Alaskan Blue, Dynasty Green**

Sizes **4 - 26**

Featured in Melon with 24014 Chevron Skirt



MENS SHORT SLEEVE SHIRT

Code **40122**

Colours **Patriot Blue, Melon, Alaskan Blue, Dynasty Green**

Sizes **XS - 5XL**

Featured in Patriot Blue with 74012 Flat Front pant, 99300 Leather Reversible Belt

MENS LONG SLEEVE SHIRT

Code **40120**

Colours **Patriot Blue, Melon, Alaskan Blue, Dynasty Green**

Sizes **XS - 5XL**

Featured in Dynasty Green with 74012 Flat Front Pant, 99103 Wide Contrast Stripe Tie, 99300 Leather Reversible Belt



BORDEAUX

LADIES SHORT SLEEVE SHIRT
Code **40112**
Colours **Patriot Blue, Alaskan Blue, Dynasty Green, Melon**
Sizes **4 - 26**
Featured in Alaskan Blue with 14017 Slim Leg Pant

LADIES 3/4 SLEEVE SHIRT
Code **40114**
Colours **Patriot Blue, Alaskan Blue, Dynasty Green, Melon**
Sizes **4 - 26**
Featured in Patriot Blue with 24014 Chevron Skirt



COORDINATES WITH
FIFTH AVENUE RANGE



HUDSON

LADIES 3/4 SLEEVE SHIRT

Code **40311**

Colours **Patriot Blue, White,
Dynasty Green, Melon**

Sizes **4 - 26**

Featured in Patriot Blue with 24014 Chevron Skirt

LADIES LONG SLEEVE SHIRT

Code **40310**

Colours **Patriot Blue, White,
Dynasty Green, Melon**

Sizes **4 - 26**

Featured in Melon with 24014 Chevron Skirt

MENS LONG SLEEVE SHIRT

Code **40320**

Colours **Patriot Blue, White,
Dynasty Green, Melon**

Sizes **XS - 5XL**

Featured in White with 74012 Flat Front Pant,
99100 Spot Tie, 99300 Leather Reversible Belt

MENS SHORT SLEEVE SHIRT

Code **40322**

Colours **Patriot Blue, White,
Dynasty Green, Melon**

Sizes **XS - 5XL**

Featured in Dynasty Green with 74012 Flat Front Pant



VERMONT

MENS LONG SLEEVE SHIRT

Code **40220**
Colours **Patriot Blue, Alaskan Blue,
Dynasty Green, Melon**
Sizes **XS - 5XL**

Featured in Patriot Blue with 74012 Flat Front Pant,
99104 Slim Tie, 99300 Leather Reversible Belt,
99400 Unisex Cufflinks

LADIES LONG SLEEVE SHIRT

Code **40210**
Colours **Patriot Blue, Alaskan Blue,
Dynasty Green, Melon**
Sizes **4 - 26**

Featured in Melon with 14017 Slim Leg Pant

LADIES SHORT SLEEVE SHIRT

Code **40212**
Colours **Patriot Blue, Alaskan Blue,
Dynasty Green, Melon**
Sizes **4 - 26**

Featured in Alaskan Blue with 24014 Chevron Skirt





SOLANDA PLAIN

LADIES (PLAIN) LONG SLEEVE SHIRT

Code **40410**

Colours **Patriot Blue, Alaskan Blue,
Dynasty Green, Melon, White**

Sizes **4 - 26**

Featured in Patriot Blue with 14017 Slim Leg Pant

LADIES (PLAIN) SHORT SLEEVE SHIRT

Code **40412**

Colours **Patriot Blue, Alaskan Blue,
Dynasty Green, Melon, White**

Sizes **4 - 26**

Featured in Alaskan Blue with 10630 Tapered Leg Pant



SOLANDA PRINT

LADIES (PRINT) LONG SLEEVE SHIRT

Code **40510**

Colours **Patriot Blue, Alaskan Blue,
Dynasty Green, Melon**

Sizes **4 - 26**

Featured in Melon with 24014 Chevron Skirt

LADIES (PRINT) SHORT SLEEVE SHIRT

Code **40512**

Colours **Patriot Blue, Alaskan Blue,
Dynasty Green, Melon**

Sizes **4 - 26**

Featured in Dynasty Green with 24014 Chevron Skirt





LADIES ACCESSORIES

LADIES MONOTONE KNITTED SCARF

Code **99000**

Colours **Patriot Blue, Alaskan Blue, Dynasty Green, Melon**

Sizes **One size**

LADIES TWO TONE SCARF

Code **99001**

Colours **Melon/Patriot Blue, Melon/Alaskan Blue, Melon/Dynasty Green, Melon/Purple Reign**

Sizes **One size**

LADIES LEATHER REVERSIBLE BELT

Code **99200**

Colours **Black/Red**

Sizes **8, 12, 16, 20, 24, 28**



MENS ACCESSORIES

MENS SLIM TIE

Code **99104**

Colours **Patriot Blue, Alaskan Blue, Dynasty Green, Melon, Purple Reign, Black**

Sizes **One size**

MENS SPOT TIE

Code **99100**

Colours **Patriot Blue, Alaskan Blue Dynasty Green, Melon**

Sizes **One size**

MENS WIDE CONTRAST STRIPE TIE

Code **99103**

Colours **Patriot Blue, Alaskan Blue Dynasty Green, Melon**

Sizes **One size**

MENS SINGLE CONTRAST STRIPE TIE

Code **99102**

Colours **Patriot Blue, Alaskan Blue Dynasty Green, Melon**

Sizes **One size**

MENS SELF STRIPE TIE

Code **99101**

Colours **Patriot Blue, Alaskan Blue Dynasty Green, Melon, Grey**

Sizes **One size**



UNISEX CUFFLINKS

Code **99400**

Colours **Black, Alaskan Blue, Dynasty Green, Melon, Purple Reign**

Sizes **One size**

MENS LEATHER REVERSIBLE BELT

Code **99300**

Colours **Black/Brown**

Sizes **72 - 97, 102 - 127 cut to size**

Designed to create options with ease, every colour, cut and style can be seamlessly co-ordinated, making the ultimate working wardrobe.



CORPORATE COOL

Look sharp in a combination of blue and charcoal - an office staple.

01. **42312** BLUE LILA SPOT TOP / **20640** CHARCOAL SKIRT WITH REAR SPLIT

02. **40110** ALASKAN BLUE FIFTH AVENUE LONG SLEEVE SHIRT / **61610** CHARCOAL COLLARLESS JACKET / **10630** CHARCOAL TAPERED LEG PANT

03. **40220** ALASKAN BLUE VERMONT LONG SLEEVE SHIRT / **84011** CHARCOAL 2 BUTTON JACKET / **74011** CHARCOAL FLAT FRONT PANT / **99101** ALASKAN BLUE SELF STRIPE TIE

01.



02.



03.



01.



02.



03.



GREY AND MELON

Sophistication in soft tones, the contemporary way to wear colour.

01. **40310** MELON HUDSON LONG SLEEVE SHIRT / **60315** GREY CROPPED JACKET / **10320** GREY CONTOUR BAND PANT

02. **30312** GREY SHIFT DRESS / **99000** MELON MONOTONE KNITTED SCARF

03. **40120** MELON FIFTH AVENUE LONG SLEEVE SHIRT / **80313** GREY SLIMLINE JACKET / **70313** GREY SLIMLINE PANT / **99102** MELON SINGLE CONTRAST STRIPE TIE / **99300** LEATHER REVERSIBLE BELT



JEWEL-TONED GREENS

Go green and black with a striking mix of style and confidence.

01. **40512** DYNASTY GREEN SOLANDA PRINT SHORT SLEEVE SHIRT / **10118** BLACK LOUISE PANT

02. **42520** EDEN GREEN NEWPORT LONG SLEEVE SHIRT / **80111** BLACK 2 BUTTON JACKET / **70111** BLACK ONE PLEAT PANT / **99300** LEATHER REVERSIBLE BELT / **99103** DYNASTY GREEN WIDE CONTRAST STRIPE TIE

03. **AC41511** DYNASTY GREEN ADVATEX COOL ABBY 3/4 SLEEVE KNIT TOP / **60112** BLACK LONGLINE JACKET / **20115** BLACK MULTI PLEAT SKIRT



01.



02.



03.



NAUTICAL BLUES

Add a breath of fresh air with cool blues and crisp silhouettes.

01. **42622** FRENCH NAVY OLIVER SHORT SLEEVE POLO / **70113** NAVY SLIMLINE PANT / **99300** LEATHER REVERSIBLE BELT

02. **42512** FRENCH NAVY NEWPORT SHORT SLEEVE SHIRT / **60114** NAVY SLEEVELESS JACKET / **10112** NAVY HIPSTER FIT PANT

03. **AC42912** NAVY ADVATEX COOL LEAH BUTTON KNIT TOP / **20116** NAVY WAISTED PENCIL SKIRT



MONOCHROME

For classic style with minimal edge,
look to black and white.

01. **40320** WHITE HUDSON LONG SLEEVE SHIRT /
80211 BLACK 2 BUTTON JACKET / **70211** BLACK ONE
PLEAT PANT / **99104** BLACK SLIM TIE

02. **30211** BLACK SLEEVELESS DRESS

03. **40410** WHITE SOLANDA LONG SLEEVE SHIRT /
60213 BLACK REVERSE LAPEL JACKET /
20214 BLACK CHEVRON SKIRT



TROUSER SPOTLIGHT |

In a range of flattering ladies fits, we've got the perfect pair (or pairs!) for all body shapes. Check out our measurement guide on p.114 to help you find the right size.



LEFT TO RIGHT **10116** Piped Band Pant **10112** Hipster Fit Pant **10117** Slim Leg Pant



LEFT TO RIGHT **10111** Relaxed Fit Pant **10115** Adjustable Waist Pant **10113** Easy Fit Pant

IT'S THE NEW 9 TO 5

Mixing tailored and casual pieces is the key to loosening up at the office, and classing up your weekend. It's the new definition of work/life balance.

THIS PAGE
41721 Purple Reign Calais 3/4 Sleeve Shirt
61610 Charcoal Collarless Jacket
10630 Charcoal Tapered Pant

THE BOARD ROOM

CASUAL FRIDAY

CLIENT LUNCH

BUSINESS TRIP

HAPPY HOUR

CLOCKWISE FROM TOP LEFT **42511** Purple Reign Newport 3/4 Sleeve Shirt **10320** Grey Contour Band Pant **A59510** Navy Advatex Varesa Cardigan ; **40112** Melon Bordeaux Short Sleeve Shirt **24016** Charcoal Waisted Pencil Skirt ; **30620** Charcoal Open Neck Dress ; **AC41412** Patriot Blue Advatex Cool Mae Short Sleeve Top **10320** Grey Contour Band Pant **99001** Purple Reign Two Tone Scarf

ANATOMY OF A PERFECT FIT

The secret to looking professional no matter what you wear is FIT. Fit, fabric and construction are the key to that long, lean silhouette - with comfort to spare.

Being a gentleman never goes out of style.

SHARP SHOULDER

Seams should sit at the edge of your own shoulder. If there's extra room after you've found your closest size, a tailor can nip the jacket in the back to tighten up the 'point to point'.

TAILORED SLEEVE

Your jacket sleeve should be short enough to show a sliver of shirt cuff.

FITTED TORSO

The jacket should graze your frame, but not hug it. A tailor can move the button left to right, subtly to affect how snug the jacket fits.

THE SEAT OF YOUR PANTS

The seat should hang comfortably, but without a lot of excess fabric. A tailor can take it in or out as needed.

CLEAN BREAK

When having your trousers hemmed, ask for either a slight break in front (the traditional option), or no break, ending at or just above your shoe.

THIS PAGE

40320 White Hudson
Long Sleeve Shirt

84013 Black Slimline Jacket

74013 Black Slimline Pant

99104 Black Slim Tie



ON YOUR OWN TERMS

There's more than one way to wear a three-piece outfit. Express your personal style in a multitude of ways with our extensive range of shirts and suiting pieces.

THIS PAGE
42520 Purple Reign Newport Long Sleeve Shirt
80113 Charcoal Slimline Jacket
70113 Charcoal Slimline Pant



NEVER UNDERESTIMATE A KNIT SWEATER

When a suit is too dressy, but shirt sleeves are too casual, the appropriate sweater can strike the perfect balance.



A GOOD SHIRT SHOULD FIT LIKE A GLOVE

Boulevard's range of mens shirts are available in Euro or Executive fits, so you can get the right kind of personalised fit a well-dressed man needs.



CLOCKWISE FROM TOP LEFT **40220** Melon Vermont Long Sleeve Shirt **70313** Grey Slimline Pant **A59520** Navy Advatex Varesa Pullover **99102** Melon Single Contrast Stripe Tie ; **40120** Patriot Blue Fifth Avenue Long Sleeve Shirt **90112** Charcoal Longline Vest **70111** One Pleat Pant **99104** Patriot Blue Slim Tie

LUXE



KNIT

Fabric plays an important role in dressing well - and comfortably.
With sophisticated tailoring and breathable stretch,
Rococo's knit soft suiting is perfect for travel and day to night wear.

LADIES OPEN NECK DRESS
Code **30620**
Colours **Charcoal**
Sizes **4 - 26**
Featured in Charcoal

ROCOCO
by Biz Corporates



01.

Soft textures and modern shapes define Rococo's most coveted styles.



01. LADIES COLLARLESS JACKET

Code **61610**
Colours **Charcoal**
Sizes **4 - 26**

Featured in Charcoal with 20640 Skirt with Rear Split, 41821 Herne Bay 3/4 Sleeve Shirt

02. LADIES SKIRT WITH REAR SPLIT

Code **20640**
Colours **Charcoal**
Sizes **4 - 26**

Featured in Charcoal with 41722 Calais Short Sleeve Shirt

03. LADIES TAPERED LEG PANT

Code **10630**
Colours **Charcoal**
Sizes **4 - 26**

Featured in Charcoal with AC41511 Abby 3/4 Sleeve Knit Top



ROCOCO
by Biz Corporates



POWER OF



PATTERN

Break away from the traditional corporate palette of navy and black with **Rococo's cross dyed stretch textured suiting**. A smart combination of fashion focused design and wear-ability.

01. LADIES SHORT SLEEVE DRESS

Code **30312**

Colours **Grey**

Sizes **4 - 22**

Featured in Grey

02. LADIES PANELLED SKIRT WITH REAR SPLIT

Code **20316**

Colours **Grey**

Sizes **4 - 26**

Featured in Grey with 41721 Calais 3/4 Sleeve Shirt

03. LADIES CROPPED JACKET

Code **60315**

Colours **Grey**

Sizes **4 - 26**

Featured in Grey with 10311 Relaxed Fit Pant,
40110 Fifth Avenue Long Sleeve Shirt, 99200 Leather Reversible Belt

01.



02.



Comfort waist
Multi-pleats



01.

Effortlessly
stylish, polished
pieces to update
your work
wardrobe.



01.

Contour waistband
Tapered leg

01. LADIES CONTOUR BAND PANT

Code **10320**

Colours **Grey**

Sizes **4 - 26**

Featured in Grey with 40410 Solanda Plain Long Sleeve Shirt

02. LADIES RELAXED FIT PANT

Code **10311**

Colours **Grey**

Sizes **4 - 26**

Featured in Grey with 41721 Calais 3/4 Sleeve Shirt

03. MENS SLIMLINE JACKET

Code **80313**

Colours **Grey**

Sizes **87R - 127R**

Featured in Grey with 41810 Herne Bay Long Sleeve Shirt,
99300 Leather Reversible Belt

02.

Relaxed waist
Mid rise

03.

MENS SLIMLINE PANT

Code **70313**

Colours **Grey**

Sizes **72R - 112R**

Featured in Grey with 42520 Newport Long

Sleeve Shirt, A59520 Varesa Pullover

Flat front
Slim leg

TRANS- SEASONAL STYLE

Wool Stretch is the natural choice for comfortably stylish suiting. With a mix of 43% Wool, 55% Polyester and 2% Elastane, the Wool Stretch range is easy care, providing year round comfort in any climate.



01.

LADIES JACKETS & VESTS

01. LADIES REVERSE LAPEL JACKET

Code **64013**

Colours **Navy, Black, Charcoal**

Sizes **4 - 26**

Featured in Navy with 24015 Multi-Pleat Skirt,
AC41511 Abby 3/4 Sleeve Knit Top

02. LADIES LONGLINE JACKET

Code **64012**

Colours **Navy, Black, Charcoal**

Sizes **4 - 26**

Featured in Black with 14011 Relaxed Fit Pant,
40110 Fifth Avenue Long Sleeve Shirt

02.



01. LADIES SHORT-MID LENGTH JACKET

Code **64011**

Colours **Navy, Black, Charcoal**

Sizes **4 - 26**

Featured in Charcoal with 14011 Relaxed Fit Pant,
40114 Bordeaux 3/4 Sleeve Shirt

02. LADIES PEAKED VEST

Code **54011**

Colours **Navy, Black, Charcoal**

Sizes **4 - 26**

Featured in Black with 41821 Herne Bay
3/4 Sleeve Shirt

03. LADIES SLEEVELESS JACKET

Code **64014**

Colours **Navy, Black,
Charcoal**

Sizes **4 - 26**

Featured in Navy with 14017
Slim Leg Pant, 40412 Solanda
Plain Short Sleeve Shirt

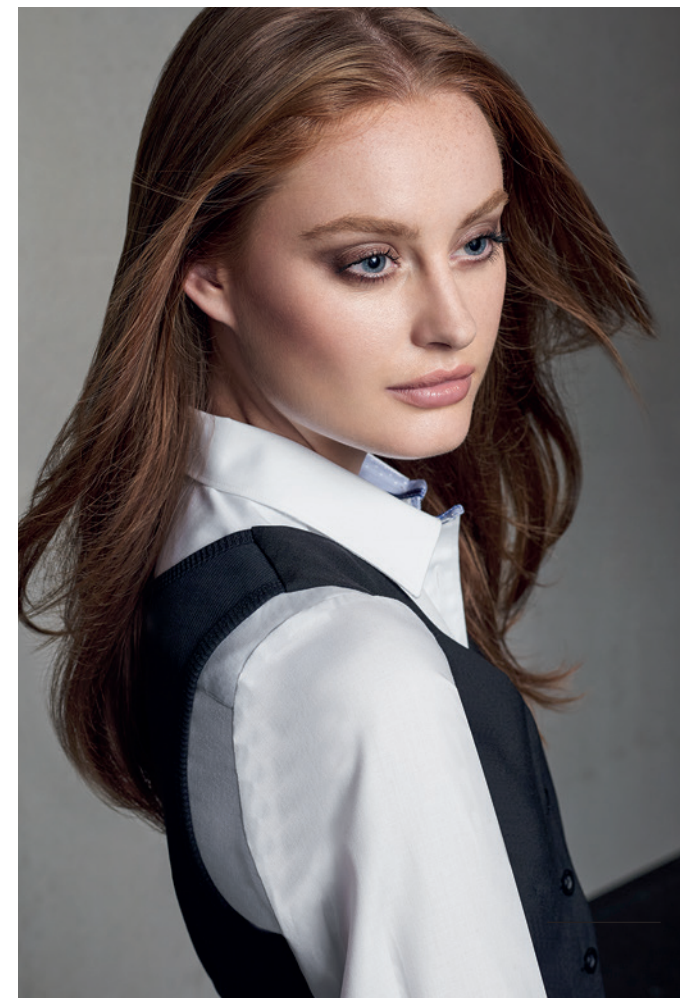
02.



03.



*Indulge in soft edges and
beautifully draped wool stretch.*



01.

LADIES DRESSES

01. LADIES SHORT SLEEVE DRESS

Code **34012**

Colours **Navy, Black, Charcoal**

Sizes **4 - 22**

Featured in Charcoal

02. LADIES SLEEVELESS DRESS

Code **34011**

Colours **Navy, Black, Charcoal**

Sizes **4 - 22**

Featured in Black



02.



01.



Relaxed waist
Slim leg

LADIES PANTS

01. LADIES SLIM LEG PANT
Code **14017**
Colours **Navy, Black, Charcoal**
Sizes **4 - 20**
Featured in Navy with 40210 Vermont Long Sleeve Shirt

02. LADIES RELAXED PANT
Code **14011**
Colours **Navy, Black, Charcoal**
Sizes **4 - 26**
Featured in Black with AC41412 Mae Short Sleeve Knit Top

03. LADIES HIPSTER PANT
Code **14012**
Colours **Navy, Black, Charcoal**
Sizes **4 - 24**
Featured in Charcoal with 42312 Lila Spot Top

04. LADIES PIPED BAND PANT
Code **14016**
Colours **Navy, Black, Charcoal**
Sizes **4 - 26**
Featured in Navy with 41821 Herne Bay 3/4 Sleeve Shirt,
99001 Two Tone Scarf

05. LADIES ADJUSTABLE WAIST PANT
Code **14015**
Colours **Navy, Black, Charcoal**
Sizes **4 - 30**
Featured in Charcoal with AC42912 Leah Button Knit Top

02.



Relaxed waist
Mid rise

03.



Lower waist
Lower rise

05.



Adjustable waist
Mid rise

04.



Higher waist
Piping detail



01.

Straight skirt
Multi-pleats



02.

Wide waistband
with pleat detail
Pencil line



03.

Relaxed waist
3/4 length



04.

Relaxed waist
Below knee



05.

Chevron waistband
Above knee

LADIES SKIRTS

01. LADIES MULTI-PLEAT SKIRT

Code **24015**

Colours **Navy, Black, Charcoal**

Sizes **4 - 26**

Featured in Charcoal with 64011 Short-Mid Length Jacket,
40111 Fifth Avenue 3/4 Sleeve Shirt

02. LADIES WAISTED PENCIL SKIRT

Code **24016**

Colours **Navy, Black, Charcoal**

Sizes **4 - 20**

Featured in Black with 41821 Herne Bay 3/4 Sleeve Shirt

03. LADIES FLUTED SKIRT

Code **24013**

Colours **Navy, Black, Charcoal**

Sizes **4 - 26**

Featured in Black with 40512 Solanda Print Short Sleeve Shirt

04. LADIES RELAXED SKIRT

Code **24011**

Colours **Navy, Black, Charcoal**

Sizes **4 - 26**

Featured in Navy with 40210 Vermont Long Sleeve Shirt

05. LADIES CHEVRON SKIRT

Code **24014**

Colours **Navy, Black, Charcoal**

Sizes **4 - 26**

Featured in Charcoal with 42312 Lila Spot Top

MENS JACKETS & VESTS

NEW STYLE

01. MENS SLIMLINE JACKET

Code **84013** **NEW**
Colours **Navy, Black, Charcoal**
Sizes **87R - 127R**

Featured in Black with 74013 Slimline Pant,
40320 Hudson Long Sleeve Shirt,
99104 Slim Tie

02. MENS 2 BUTTON JACKET

Code **84011**
Colours **Navy, Black, Charcoal**
Sizes **87R - 142R**

Featured in Navy with 42622 Oliver Polo

03. MENS LONGLINE VEST

Code **94012**
Colours **Navy, Black, Charcoal**
Sizes **87R - 142R**

Featured in Charcoal with
74013 Slimline Pant,
40120 Fifth Avenue Long Sleeve Shirt,
99101 Self Stripe Tie

04. MENS PEAKED VEST

Code **94011**
Colours **Navy, Black, Charcoal**
Sizes **87R - 142R**

Featured in Charcoal with
42520 Newport Long Sleeve Shirt

01.

02.



Timeless dark suits in modern cuts and wool stretch fabrics.

04.



03.





MENS PANTS

01. MENS SLIMLINE PANT
Code **74013** **NEW**
Colours **Navy, Black, Charcoal**
Sizes **72R - 112R**
Featured in Black with 40320 Hudson
Long Sleeve Shirt, A59523 Varesa Vest

02. MENS ONE PLEAT PANT
Code **74011**
Colours **Navy, Black, Charcoal**
Sizes **72R - 122R,**
107S - 127S
Featured in Charcoal with
40120 Fifth Avenue Long Sleeve Shirt,
99300 Leather Reversible Belt

03. MENS FLAT FRONT PANT
Code **74012**
Colours **Navy, Black, Charcoal**
Sizes **72R - 122R**
Featured in Black with 40220 Vermont
Long Sleeve Shirt, 99300 Leather Reversible Belt

04. MENS ADJUSTABLE WAIST PANT
Code **74014**
Colours **Navy, Black, Charcoal**
Sizes **72R - 127R**
Featured in Navy with 84011 2 Button Jacket,
40320 Hudson Long Sleeve Shirt, 99100 Spot Tie,
99300 Leather Reversible Belt



CLASSIC APPEAL

Cool Stretch is at the forefront of design and fabric technology, with a unique mix of 92% polyester and 8% bamboo charcoal. Breathable, easy care fabric with figure-flattering lines ensure you have the best available business wear.



01.

Shake up a dark colour palette with the pop of a vibrant hue.



02.

LADIES JACKETS & VESTS

01. LADIES SHORT-MID LENGTH JACKET

Code **60111**

Colours **Navy, Black, Charcoal**

Sizes **4 - 26**

Featured in Black with 10111 Relaxed Fit Pant,
40210 Vermont Long Sleeve Shirt

02. LADIES REVERSE LAPEL JACKET

Code **60113**

Colours **Navy, Black, Charcoal**

Sizes **4 - 26**

Featured in Charcoal with 10110 Relaxed Fit Pant,
40512 Solanda Print Short Sleeve Shirt

03. LADIES LONGLINE JACKET

Code **60112**

Colours **Navy, Black, Charcoal**

Sizes **4 - 26**

Featured in Navy with 20115 Multi-Pleat Skirt,
40410 Solanda Plain Long Sleeve Shirt

03.



72

71

01.

01. LADIES SLEEVELESS JACKET

Code **60114**

Colours **Navy, Black, Charcoal**

Sizes **4 - 26**

Featured in Black with 10116 Piped

Band Pant, 40311 Hudson 3/4 Sleeve Shirt

02. LADIES PEAKED VEST

Code **50111**

Colours **Navy, Black, Charcoal**

Sizes **4 - 26**

Featured in Charcoal with 10111 Relaxed

Fit Pant, 42511 Newport 3/4 Sleeve Shirt

02.

Peaked vest
Knitted back

01.



02.



LADIES DRESSES

01. LADIES SHORT SLEEVE DRESS
Code **30112**
Colours **Navy, Black, Charcoal**
Sizes **4 - 22**
Featured in Navy

02. LADIES SLEEVELESS DRESS
Code **30111**
Colours **Navy, Black, Charcoal**
Sizes **4 - 22**
Featured in Charcoal

LADIES PANTS

01. LADIES SLIM LEG PANT

Code **10117**

Colours **Navy, Black, Charcoal**

Sizes **4 - 20**

Featured in Navy with 42511 Newport 3/4 Sleeve Shirt
02. LADIES HIPSTER FIT PANT

Code **10112**

Colours **Navy, Black, Charcoal**

Sizes **4 - 24**

Featured in Charcoal with 40410 Solanda Plain Long Sleeve Shirt, 99200 Leather Reversible Belt



03. LADIES PIPED BAND PANT

Code **10116**

Colours **Navy, Black, Charcoal**

Sizes **4 - 26**

Featured in Navy with 42312 Lila Spot Top
04. LADIES BOOTLEG PANT

Code **10114**

Colours **Navy, Black, Charcoal**

Sizes **4 - 26**

Featured in Black with 40210 Vermont Long Sleeve Shirt
05. LADIES RELAXED FIT PANT

Code **10111**

Colours **Navy, Black, Charcoal**

Sizes **4 - 26**

Featured in Navy with AC41412 Mae Short Sleeve Knit Top, 99200 Leather Reversible Belt



01. LADIES ADJUSTABLE WAIST PANT

Code **10115**

Colours **Navy, Black, Charcoal**

Sizes **4 - 30**

Featured in Black with 40210 Vermont Long Sleeve Shirt

02. LADIES LOUISE PANT

Code **10118**

Colours **Navy, Black, Charcoal**

Sizes **4 - 30**

Featured in Navy with 60111 Short-Mid Length Jacket, 41721 Calais 3/4 Sleeve Shirt

03. LADIES EASY FIT PANT

Code **10113**

Colours **Navy, Black, Charcoal**

Sizes **4 - 32**

Featured in Charcoal with 40512 Solanda Print Short Sleeve Shirt



Louise Pant and Shorts feature adjustable waist, key loop and extra side pocket

04. LADIES ADJUSTABLE WAIST SHORT

Code **10119**

Colours **Navy, Black, Charcoal**

Sizes **4 - 30**

Featured in Navy with 42511 Newport 3.4 Sleeve Shirt

04. LADIES MATERNITY PANT

Code **10100**

Colours **Navy, Black, Charcoal**

Sizes **S - XL**

Featured in Black with AC42412 Sandy Linear Pleat Knit Top



LADIES SKIRTS

01. LADIES RELAXED SKIRT

Code **20111**
Colours **Navy, Black, Charcoal**
Sizes **4 - 26**
Featured in Navy with 40110 Fifth Avenue Long Sleeve Shirt

02. LADIES FLUTED SKIRT

Code **20113**
Colours **Navy, Black, Charcoal**
Sizes **4 - 26**
Featured in Charcoal with 40412 Solanda Plain Short Sleeve Shirt

03. LADIES BANDLESS SKIRT

Code **20112**
Colours **Navy, Black, Charcoal**
Sizes **4 - 26**
Featured in Charcoal with 42511 Newport 3/4 Sleeve Shirt, A59510 Varesa Cardigan

04.

04. LADIES MULTI-PLEAT SKIRT

Code **20115**
Colours **Navy, Black, Charcoal**
Sizes **4 - 26**
Featured in Navy with 40210 Vermont Long Sleeve Shirt

05. LADIES WAISTED PENCIL SKIRT

Code **20116**
Colours **Navy, Black, Charcoal**
Sizes **4 - 20**
Featured in Black with 42312 Lila Spot Top

06. LADIES CHEVRON SKIRT

Code **20114**
Colours **Navy, Black, Charcoal**
Sizes **4 - 26**
Featured in Navy with 40210 Vermont Long Sleeve Shirt

01.

Relaxed waist
Below knee

02.

Relaxed waist
3/4 length

03.

Bandless waist
Above knee

06.

Chevron waistband
Above knee

05.

Wide waistband
with pleat detail
Pencil line

01.

MENS JACKETS & VESTS

01. MENS 2 BUTTON JACKET

Code **80111**

Colours **Navy, Black,
Charcoal**

Sizes **87R - 142R**

Featured in Charcoal with
70112 Flat Front Pant, 90111 Peaked Vest,
40120 Fifth Avenue Long Sleeve Shirt,
99104 Slim Tie

02. MENS SLIMLINE JACKET

Code **80113**

Colours **Navy, Black,
Charcoal**

Sizes **87R - 127R**

Featured in Navy with
70113 Slimline Pant,
42520 Newport Long Sleeve Shirt,
99104 Slim Tie,
99300 Leather Reversible Belt



02.



Breathing new life into old favourites with
a knitted back for ease of movement.



01.

Peaked Vest
Knitted Back

02.

01. MENS PEAKED VEST

Code **90111**

Colours **Navy, Black, Charcoal**

Sizes **87R - 142R**

Featured in Black with 70112 Flat Front Pant,
41810 Herne Bay Long Sleeve Shirt

02. MENS LONGLINE VEST

Code **90112**

Colours **Navy, Black, Charcoal**

Sizes **87R - 142R**

Featured in Charcoal with 70112 Flat Front Pant,
42520 Newport Long Sleeve Shirt



01.



Pleat front
Straight leg

01. MENS ONE PLEAT PANT

Code **70111**

Colours **Navy, Black, Charcoal**

Sizes **72R - 112R, 107S - 127S**

Featured in Charcoal with 40120 Fifth Avenue Long Sleeve Shirt, 99102 Single Contrast Stripe Tie, 99300 Leather Reversible Belt

MENS PANTS

02. MENS FLAT FRONT PANT

Code **70112**

Colours **Navy, Black, Charcoal**

Sizes **72R - 112R, 107S - 127S**

Featured in Black with 41810 Herne Bay Long Sleeve Shirt, 80111 2 Button Jacket, 99300 Leather Reversible Belt



Flat front
Straight leg

03.



Adjustable waist
Straight leg

03. MENS ADJUSTABLE WAIST PANT

Code **70114**

Colours **Navy, Black, Charcoal**

Sizes **72R - 102R, 107S - 127S**

Featured in Charcoal with 42520 Newport Long Sleeve Shirt, A59520 Varesa Pullover

04. MENS SLIMLINE PANT

Code **70113**

Colours **Navy, Black, Charcoal**

Sizes **72R - 112R**

Featured in Navy with 42622 Oliver Polo

04.



Flat front
Slim leg

WALK THE LINE

With vertical lines to elongate form and all the benefits of Cool Stretch fabric technology, Cool Stretch Pinstripe is the epitome of style and sophistication.



01.



01. LADIES REVERSE LAPEL JACKET

Code **60213**

Colours **Navy, Black, Charcoal**

Sizes **4 - 26**

Featured in Black with 30211 Sleeveless Dress

02. LADIES SHORT-MID LENGTH
JACKET

Code **60211**

Colours **Navy, Black, Charcoal**

Sizes **4 - 26**

Featured in Navy with 20214 Chevron Skirt,
40310 Hudson Long Sleeve Shirt

02.



01.



01. LADIES SLEEVELESS DRESS

Code **30211**

Colours **Navy, Black, Charcoal**

Sizes **4 - 22**

Featured in Black with 99200 Leather Reversible Belt

02. LADIES HIPSTER PANT

Code **10212**

Colours **Navy, Black, Charcoal**

Sizes **4 - 24**

Featured in Navy with 42511 Newport 3/4 Sleeve Shirt,
99200 Leather Reversible Belt

03. LADIES RELAXED FIT SKIRT

Code **20211**

Colours **Navy, Black, Charcoal**

Sizes **4 - 26**

Featured in Black with 60211 Short-Mid Length Jacket,
40410 Solanda Plain Long Sleeve Shirt

04. LADIES RELAXED FIT PANT

Code **10211**

Colours **Navy, Black, Charcoal**

Sizes **4 - 26**

Featured in Charcoal with 40210 Vermont
Long Sleeve Shirt, 99200 Leather Reversible Belt

05. LADIES CHEVRON SKIRT

Code **20214**

Colours **Navy, Black, Charcoal**

Sizes **4 - 26**

Featured in Navy with AC41511 Abby 3/4 Sleeve Knit Top

02.



Lower waist
Lower rise

03.



Relaxed waist
Below knee

04.



Relaxed waist
Mid rise

05.



Chevron waistband
Above knee

01.



02.



01. MENS 2 BUTTON JACKET

Code **80211**

Colours **Navy, Black, Charcoal**

Sizes **92R - 142R**

Featured in Black with 70212 Flat Front Pant,
41810 Herne Bay Long Sleeve Shirt,
99104 Slim Tie, 99300 Leather Reversible Belt

01. MENS FLAT FRONT PANT

Code **70212**

Colours **Navy, Black, Charcoal**

Sizes **77R - 122R**

02. MENS ONE PLEAT PANT

Code **70211**

Colours **Navy, Black, Charcoal**

Sizes **77R - 122R**

Featured in Black with 40120 Fifth Avenue
Long Sleeve Shirt, 99100 Spot Tie,
99300 Leather Reversible Belt



NEW



BIZ CORPORATES
WITH **ADVATEX**

REDUCE THE SPREAD OF BACTERIA

Combining cutting edge
Anti-Bacterial technology,
design and comfort
while you work.

ADVATEX
Silver Ion technology
can be worn on even the
most sensitive skin



Easy care, easy wear
infection control
garments for the Health
and Aged Care Industry



EASY
CARE



INFECTION
CONTROL

Limit the spread of 8
nominated strains of
bacteria up to 80% to
99% effectiveness.

Reduce the spread
of bacteria for the
life of the garment
(see **ADVATEX
Booster** below) in a
domestic wash.



Bacterial control extended
by adding **ADVATEX
Booster**
in the wash.

ADVATEXCOOL



OPTIMUM
COOL

Maximises the
absorption of
moisture from the
skin, creating a "body
cool" environment.
(eg. sweat)

Find out more information on how **ADVATEX** works on p133.

ADVATEXCOOL

LADIES LEAH BUTTON KNIT TOP

Code **AC42912 NEW**

Colours **Navy, Delta Blue,
Melon, Dynasty Green**

Sizes **4 - 32**

Featured in Delta Blue (this page) and Navy (opposite
page) with A11519 Adjustable Waist Short



01.



ADVATEX COOL maximises the absorption of moisture from the skin creating a 'body cool' environment.



ADVATEXCOOL

01. LADIES SANDY LINEAR PLEAT KNIT TOP
Code **AC42412 NEW**
Colours **Navy, Delta Blue, Melon, Dynasty Green**
Sizes **4 - 32**
Featured in Delta Blue (top left) and Melon (top right)
with A11519 Adjustable Waist Short

02. LADIES ELLA DIAMOND PLEAT KNIT TOP
Code **AC42812 NEW**
Colours **Navy, Delta Blue, Melon, Dynasty Green**
Sizes **4 - 32**
Featured in Dynasty Green with A11519 Adjustable Waist Short

02.

NEW STYLES



01.



ADVATEXCOOL

01. LADIES ABBY 3/4 SLEEVE KNIT TOP
Code **AC41511 NEW**
Colours **Blue, Melon, Dynasty Green, White, Patriot Blue, Black**
Sizes **4 - 32**
Featured in Dynasty Green with A11515 Adjustable Waist Pant

02. LADIES MAE SHORT SLEEVE KNIT TOP
Code **AC41412 NEW**
Colours **Blue, Melon, Dynasty Green, White, Patriot Blue, Black**
Sizes **4 - 32**
Featured in Dynasty Green with A11515 Adjustable Waist Pant

02.



NEW STYLES



03.



ADVATEX

03. LADIES TONI SHORT SLEEVE SHIRT
Code **A41312**
Colours **Blue, Melon, Dynasty Green**
Sizes **4 - 32**
Featured in Dynasty Green (left) and Blue (bottom right) with A11515 Adjustable Waist Pant, A59513 Varesa Vest





*Combining functional technology
and design to create bacterial
managed apparel that maximizes
wearer image and comfort.*



ADVATEX

01. LADIES LINDSEY 3/4 SLEEVE SHIRT

Code **A41011**

Colours **Blue, Melon, Dynasty Green**

Sizes **4 - 32**

Featured in Melon with A11515 Adjustable Waist Pant,
99200 Leather Reversible Belt

02. MENS LINDSEY SHORT SLEEVE SHIRT

Code **A41022**

Colours **Blue, Melon, Dynasty Green**

Sizes **XS - 5XL**

Featured in Dynasty Green with A71514 Adjustable Waist Pant,
99300 Leather Reversible Belt

03. LADIES LINDSEY SHORT SLEEVE SHIRT

Code **A41012**

Colours **Blue, Melon, Dynasty Green**

Sizes **4 - 32**

Featured in Dynasty Green with A11515 Adjustable Waist Pant



ADVATEX

01. LADIES ADJUSTABLE WAIST SKIRT

Code **A21510**

Colours **Navy, Black, Charcoal**

Sizes **4 - 32**

Featured in Charcoal with A41011 Lindsey 3/4 Sleeve Shirt

02. LADIES ADJUSTABLE WAIST PANT

Code **A11515**

Colours **Navy, Black, Charcoal**

Sizes **4 - 32**

Featured in Navy with AC41511 Abby 3/4 Sleeve Knit Top, A59510 Varesa Cardigan

03. MENS ADJUSTABLE WAIST PANT

Code **A71514**

Colours **Navy, Black, Charcoal**

Sizes **72R - 127R**

Featured in Navy with A49022 Swindon Polo

04. MENS ADJUSTABLE WAIST SHORT

Code **A71519 NEW**

Colours **Navy, Black, Charcoal**

Sizes **72R - 127R**

Featured in Navy with A49022 Swindon Polo

04. LADIES ADJUSTABLE WAIST SHORT

Code **A11519 NEW**

Colours **Navy, Black, Charcoal**

Sizes **4 - 32**

Featured in Navy with A49012 Swindon Polo



01.



*All knitwear garments
are fully fashioned
double knit produced in
an ADVATEX wool blend.*



02.



03.



ADVATEX

01. LADIES VARESA CARDIGAN

Code **A59510**

Colours **Navy, Charcoal**

Sizes **XS - 4XL**

Featured in Charcoal with A21510 Adjustable Waist Skirt,
AC41412 Mae Short Sleeve Knit Top

01. MENS VARESA PULLOVER

Code **A59520**

Colours **Navy, Charcoal**

Sizes **XS - 3XL, 5XL**

Featured in Charcoal with A71514 Adjustable Waist Pant,
A41022 Lindsey Short Sleeve Shirt

02. LADIES VARESA VEST

Code **A59513**

Colours **Navy, Charcoal**

Sizes **XS - 4XL**

Featured in Charcoal with A11515 Adjustable Waist Pant,
A41011 Lindsey 3/4 Sleeve Shirt

03. MENS VARESA VEST

Code **A59523**

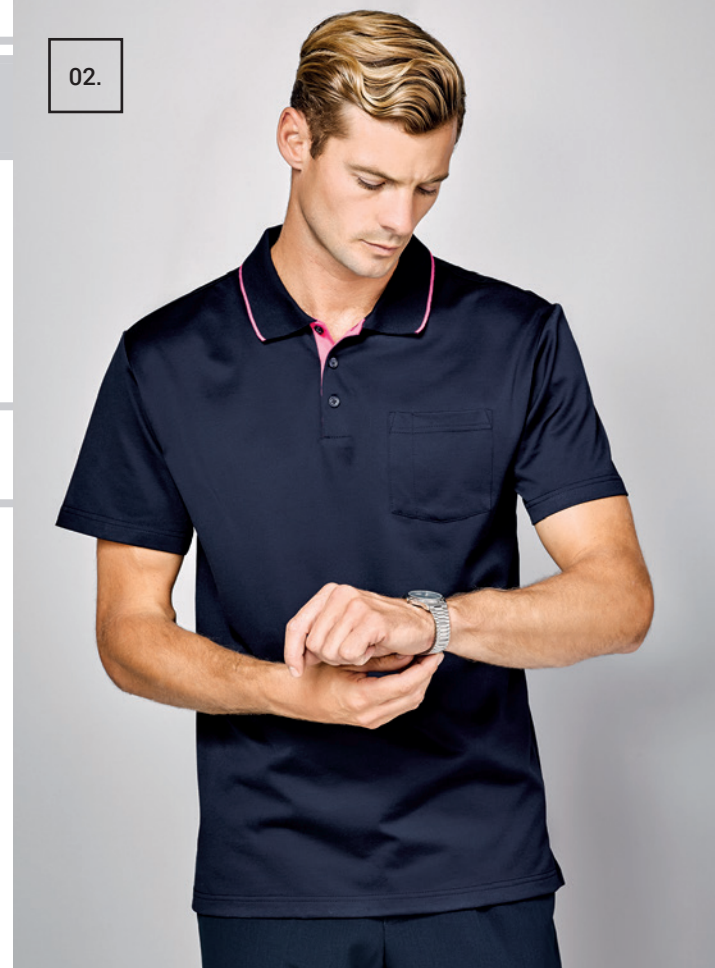
Colours **Navy, Charcoal**

Sizes **XS - 3XL, 5XL**

Featured in Charcoal with A71514 Adjustable Waist Pant,
A41022 Lindsey Short Sleeve Shirt

01.

02.



Incredibly comfortable with a soft-touch finish. Design details include contrast trims plus a functional pocket with pen stitch.


ADVATEX
01. LADIES SWINDON POLO

 Code **A49012**

 Colours **Navy/Blue, Navy/White, Navy/Melon, Navy/Dynasty Green**

 Sizes **4 - 32**

Featured in Navy/Melon with A11515 Adjustable Waist Pant

02. MENS SWINDON POLO

 Code **A49022**

 Colours **Navy/Blue, Navy/White, Navy/Melon, Navy/Dynasty Green**

 Sizes **XS - 3XL, 5XL**

Featured in Navy/Melon with A71514 Adjustable Waist Pant

Colour coded sizes for easy reference

ADVATEX
UNISEX JOHNSON SCRUB TOP

 Code **A59000**

 Colours **Navy, Royal**

 Sizes **XXS - 3XL, 5XL**
UNISEX JOHNSON SCRUB PANT

 Code **A59100**

 Colours **Navy, Royal**

 Sizes **XXS - 3XL, 5XL**


XXS

XS

S

M

L

XL

2XL

3XL

5XL

RETROFITTING THE LADY

FIND THE RIGHT FIT FOR YOUR BODY TYPE WITH OUR MEASUREMENT GUIDE

HOW TO MEASURE

For an accurate body measurement, please keep the tape measure taut.

A. BUST

Measure under your arms and across shoulder blades, around the fullest part of your chest. Hold one finger between body and tape.

B. WAIST

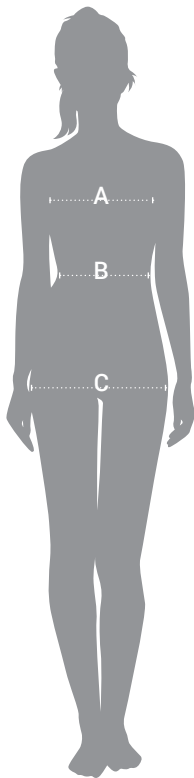
Measure around your natural wasitline while holding one finger between body and tape.

C. HIPS

Measure around fullest part of your hips (about 20 - 24 cm down from waist) while standing naturally.

PANT & SKIRT LENGTHS

Pants and skirts will vary in length depending on the height of each individual and also their shape.



STYLE FITS

Our shirts and bottoms are available in fits to suit all body types.



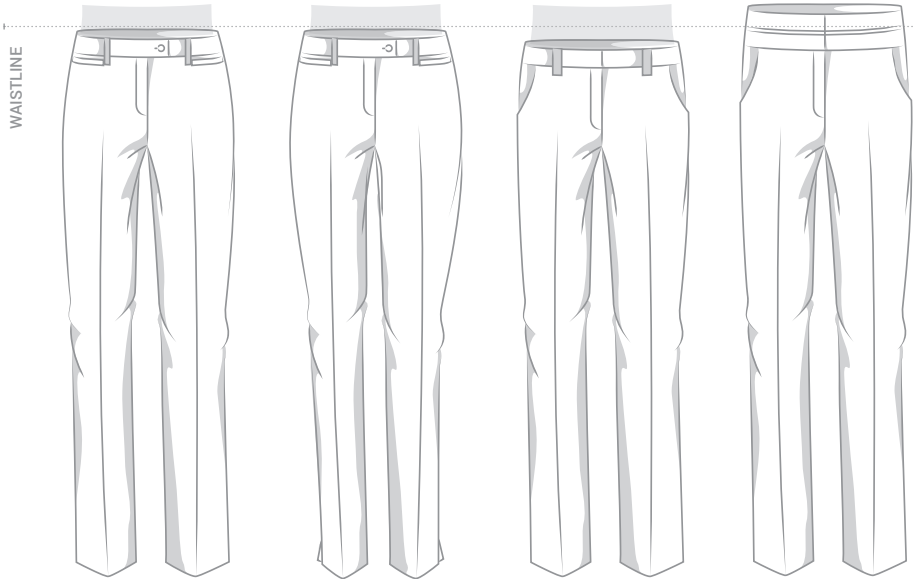
FITTED
Shaped and close fitting to the contours of the body



SEMI-FITTED
Gently shaped through the torso. Follows the contours of the body.



EASY FIT
Generous fit with a longer line. Straight through the torso.



**RELAXED FIT
MID RISE**

Sits slightly below waistline

**SLIM LEG
MID RISE**

Sits slightly below waistline with contoured leg

**HIPSTER FIT
LOW RISE**

Lower rise, sits below waistline.

**HIGH WAISTED
MID RISE**

Wide waist band sits closer to waistline



**ADJUSTABLE FIT
MID RISE**

Sits slightly below waistline, hidden elastic waist band



**EASY FIT
GENEROUS RISE**

Elasticated waist band, sits closer to waistline



**STRAIGHT
BELOW KNEE**

Sits slightly below wasitline, finishes below knee



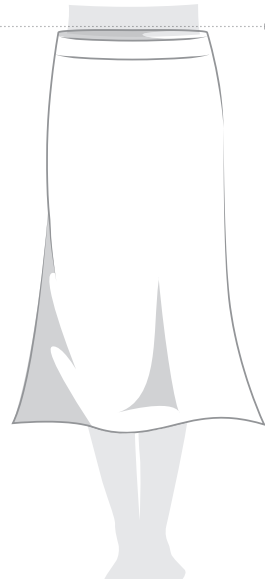
**STRAIGHT
ABOVE KNEE**

Sits slightly below waistline, finishes above knee



**HIGH WAISTED
PENCIL**

Wide waistband sits closer to waistline



**FLUTED
3/4 LENGTH**

Sits slightly below waistline, finishes between knee and calf

SIZE CONVERSIONS

Please choose the size closest to your own body measurements.

Standard Sizing

	4 / XXS		6 / XS		8 / XS - S		10 / S		12 / M		14 / L		16 / L - XL	
	cm	in	cm	in	cm	in	cm	in	cm	in	cm	in	cm	in
Bust	76.5	30	79	31	84	33	89	35	94	37	99	39	104	41
Waist	58.5	23	61	24	66	26	71	28	76	30	81	32	85	34
Lower	Add approximately 10 - 13 cm to waist measurement as this will vary.													
Hip	86.5	34	89	35	94	37	99	39	104	41	109	43	114	45

Plus Sizing

	18 / XL		20 / 2XL		22 / 3XL		24 / 4XL			
	cm	in	cm	in	cm	in	cm	in		
Bust	111	44	116	46	121	48	126	50		
Waist	93	37	98	39	103	41	108	43		
Lower	Add approximately 10 - 13 cm to waist measurement as this will vary.									
Hip	121	48	126	50	131	52	136	54		
	26 / 5XL		28		30		32			
	cm	in	cm	in	cm	in	cm	in		
Bust	131	52	136	54	141	56	146	57		
Waist	113	45	118	47	123	49	128	50		
Lower	Add approximately 10 - 13 cm to waist measurement as this will vary.									
Hip	141	56	146	57	151	60	156	61		

Note - All measurements provided are approximate and for reference only. The size conversion chart is a guide only, actual sizing may vary according to the style and fit of the garment. The waist specifications are the natural waist measurements, which have to be considered even though the garments will fit lower.

RETROFITTING THE MAN

FIND THE RIGHT FIT FOR YOUR BODY TYPE WITH OUR MEASUREMENT GUIDE

HOW TO MEASURE

For an accurate body measurement, please keep the tape measure taut.

A. NECK

Measure around the middle of your neck at collar level, keeping the tape loose to make allowance for comfort.

B. CHEST

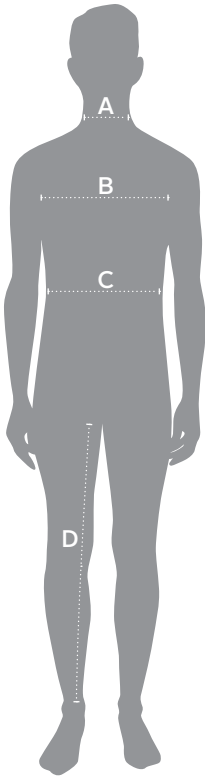
Measure under your arms and across shoulder blades, around the fullest part of your chest. Hold one finger between body and tape.

C. WAIST

Measure around your natural waistline while holding one finger between body and tape. Measure over shirt at position your pants would normally sit

D. IN SEAM

Measure from the crotch seam to the bottom of the inside leg of a well-fitting pair of pants.



STYLE FITS

Our shirts and bottoms are available in fits to suit all body types.



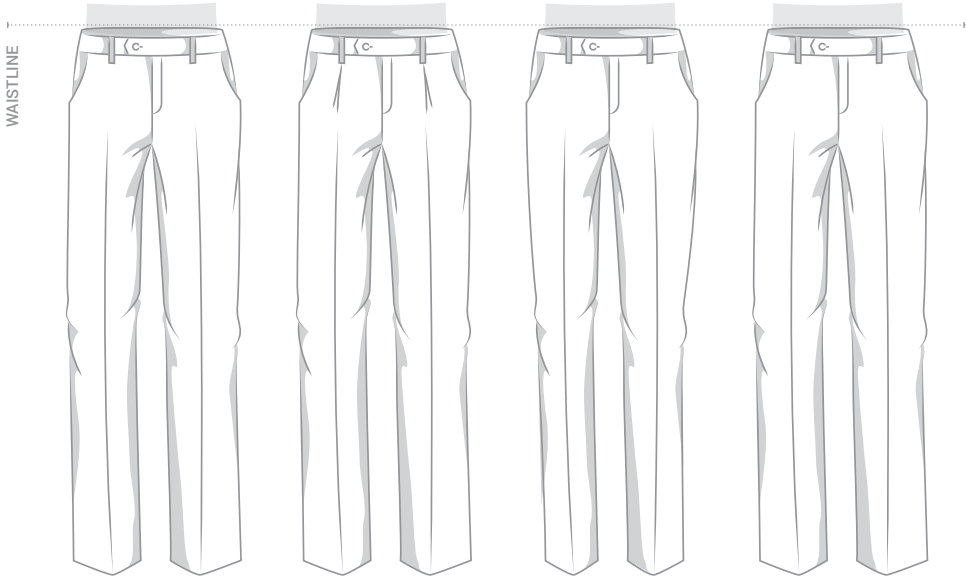
EURO FIT

Slightly tapered through the torso, fitting to the contours of the body.



EXECUTIVE FIT

Gently shaped through the torso. Relaxed modern fit.



CONTEMPORARY FIT FLAT

Sits slightly below waistline with flat front

CONTEMPORARY FIT PLEAT

Sits slightly below waistline with single pleat front

CONTEMPORARY FIT SLIM LEG

Sits slightly below waistline, tapered through the leg

ADJUSTABLE FIT FLAT

Sits slightly below waistline, hidden elastic waist band

SIZE CONVERSIONS

Please choose the size closest to your own body measurements.

Shirts

	XS	S	M	L	XL	
Neck (cm)	35 - 36	37 - 38	39 - 40	41 - 42	43 - 44	
Chest (cm)	87	92	97	102	107	
	2XL	3XL	4XL	5XL		
Neck (cm)	45 - 46	47 - 48	49 - 50	51 - 52		
Chest (cm)	117	122	127	132		

Polos, Knitwear and Scrubs

	XS		S		M		L		XL		
	cm	in	cm	in	cm	in	cm	in	cm	in	
Chest	87	34	92	36	97	38	102	40	107	42	
	2XL		3XL		4XL		5XL				
	cm	in	cm	in	cm	in	cm	in			
Chest	117	46	122	48	127	50	132	52			

Jackets and Vests

	87R		92R		97R		102R		107R		112R	
	cm	in	cm	in	cm	in	cm	in	cm	in	cm	in
Chest	87	34	92	36	97	38	102	40	107	42	112	44
Waist	72	28	77	30	82	32	87	34	92	36	97	38
	117R		122R		127R		132R		137R		142R	
	cm	in	cm	in	cm	in	cm	in	cm	in	cm	in
Chest	117	46	122	48	127	50	132	52	137	54	142	56
Waist	102	40	107	42	112	44	117	46	122	48	127	50

Trousers - Regular Fit

	72R		77R		82R		87R		92R		97R		102R	
	cm	in	cm	in	cm	in	cm	in	cm	in	cm	in	cm	in
Waist	72	28	77	30	82	32	87	34	92	36	97	38	102	40
In Seam	80	31	81	32	81	32	82	32	82	32	83	33	83	33
	107R		112R		117R		122R		127R		132R			
	cm	in	cm	in	cm	in	cm	in	cm	in	cm	in		
Chest	107	42	112	44	117	46	122	48	127	50	132	52		
Waist	84	33	84	33	84	33	84	33	84	33	84	33		

Trousers - Stout Fit

	107S		112S		117S		122S		127S			
	cm	in	cm	in	cm	in	cm	in	cm	in		
Waist	107	42	112	44	117	46	122	48	127	50		
In Seam	81	32	81	32	82	32	82	32	83	33		

Note - All measurements provided are approximate and for reference only. The size conversion chart is a guide only, actual sizing may vary according to the style and fit of the garment. The waist specifications are the natural waist measurements, which have to be considered even though the garments will fit lower.

LUXURY SHIRTING

WITH BOULEVARD'S REFINED FITS, MODERN STYLING AND IMPECCABLE ATTENTION TO DETAIL



NEWPORT

65% Cotton 33% Polyester 2% Elastane

Ladies semi-fitted concealed placket shirt with yarn dyed check soft textured stretch cotton blend.

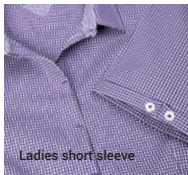
Mens executive-fit shirt with yarn dyed check soft textured stretch cotton blend.

Care Instructions

Machine wash cold. Gentle cycle with like colours. Do not soak. Do not bleach. Cool iron. Tumble dry low. Do not dry clean.



Ladies 3/4 sleeve



Ladies short sleeve



Mens long sleeve



CALAIS

60% Cotton 40% Polyester

Ladies semi-fitted fine stripe dobby textured cotton blend trim shirt.
Mens executive-fit fine stripe dobby textured cotton blend trim shirt.

Care Instructions

Machine wash cold. Gentle cycle with like colours. Do not soak. Do not bleach. cool iron. Do not dry clean



Ladies 3/4 sleeve



Ladies short sleeve



Mens long sleeve



LILA

100% Polyester

Ladies semi-fitted roll neck with key hole button back neck in soft fine crepe polyester spot design.

Care Instructions

Hand wash cold. Do not soak. Do not bleach. Do not tumble dry. Cool iron. Do not dry clean.



Ladies short sleeve



HERNE BAY

60% Cotton 40% Polyester

Ladies semi-fitted double fold yarn textured cotton blend trim shirt.
Mens executive-fit double fold yarn textured cotton blend shirt.

Care Instructions

Machine wash cold. Gentle cycle with like colours. Do not soak. Do not bleach. cool iron. Do not dry clean



Ladies long sleeve



Ladies 3/4 sleeve



Mens long sleeve



OLIVER

100% Cotton

Mens semi-slimline fit button collar polo with cotton textured main fabric with plain and check trims.

Care Instructions

Machine wash cold. Gentle cycle with like colours. Do not bleach. Do not tumble dry. Cool iron. Line dry in shade. Do not dry clean



FIFTH AVENUE

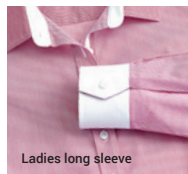
65% Cotton 33% Polyester 2% Elastane

Ladies semi-fitted yarn dyed fine stripe soft textured stretch cotton blend shirt

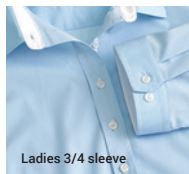
Mens euro-fit yarn dye fine stripe soft textured stretch cotton blend shirt

Care Instructions

Machine wash cold. Gentle cycle with like colours. Do not soak. Do not bleach. Tumble dry low. Cool iron. Do not dry clean.



Ladies long sleeve



Ladies 3/4 sleeve



Mens long sleeve

LUXURY SHIRTING

WITH BOULEVARD'S REFINED FITS, MODERN STYLING AND IMPECCABLE ATTENTION TO DETAIL



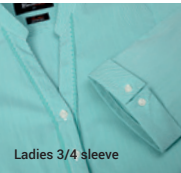
BORDEAUX

65% Cotton 33% Polyester 2% Elastane

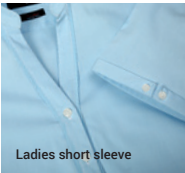
Ladies semi-fitted open neck yarn dyed fine stripe soft textured stretch cotton blend shirt

Care Instructions

Machine wash cold. Gentle cycle with like colours. Do not soak. Do not bleach. Tumble dry low. Cool iron. Do not dry clean.



Ladies 3/4 sleeve



Ladies short sleeve



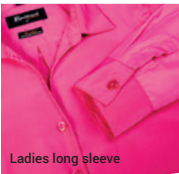
SOLANDA PLAIN

100% Polyester

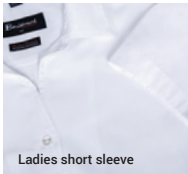
Ladies semi-fitted open neck soft touch polyester shirt.

Care Instructions

Machine wash warm. Gentle cycle with like colours. Do not soak. Do not bleach. Tumble dry medium. Cool iron. Do not dry clean.



Ladies long sleeve



Ladies short sleeve



HUDSON

100% Cotton

Ladies semi-fitted open neck yarn dyed dobby shirt.

Mens executive-fit dobby shirt.

Care Instructions

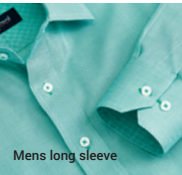
Machine wash cold. Gentle cycle with like colours. Do not soak. Do not bleach. Tumble dry low. Warm iron. Do not dry clean.



Ladies long sleeve



Ladies 3/4 sleeve



Mens long sleeve



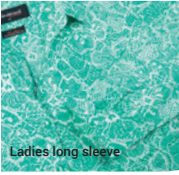
SOLANDA PRINT

100% Polyester

Ladies semi-fitted open neck soft touch polyester shirt.

Care Instructions

Machine wash warm. Gentle cycle with like colours. Do not soak. Do not bleach. Tumble dry medium. Cool iron. Do not dry clean.



Ladies long sleeve



Ladies short sleeve



VERMONT

60% Cotton 40% Polyester, Mechanical Stretch

Ladies semi-fitted open neck yarn dyed wide stripe soft textured stretch cotton blend shirt.

Mens euro-fit yarn dyed wide stripe soft textured stretch cotton blend shirt

Care Instructions

Machine wash cold. Gentle cycle with like colours. Do not soak. Do not bleach. Tumble dry low. Warm iron. Do not dry clean.



Ladies long sleeve



Mens French cuff

EYE-CATCHING EXTRAS

COMPLETE THE LOOK WITH CLASSIC BOULEVARD ESSENTIALS



MENS SLIM MONOTONE DESIGN TIE

100% Polyester

Care Instructions
Dry clean only 30c ⓘ



MENS SPOT TIE

100% Polyester

Care Instructions
Dry clean only 30c ⓘ



MENS SELF STRIPE TIE

100% Polyester

Care Instructions
Dry clean only 30c ⓘ



MENS SINGLE CONTRAST STRIPE TIE

100% Polyester

Care Instructions
Dry clean only 30c ⓘ



MENS WIDE CONTRAST STRIPE TIE

100% Polyester

Care Instructions
Dry clean only 30c ⓘ



MENS LEATHER REVERSIBLE BELT

100% Leather



LADIES LEATHER REVERSIBLE BELT

100% Leather



LADIES TWO-TONE SCARF

60% Modal 26% Polyester 14% Viscose

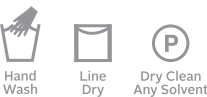
Care Instructions
Hand wash cold. Line dry in shade.
Dry clean only 30c ⓘ



LADIES MONOTONE KNITTED SCARF

100% Viscose

Care Instructions
Hand wash cold. Line dry in shade.
Dry clean only 30c ⓘ



UNISEX CUFFLINKS

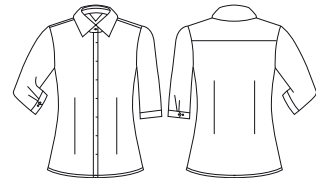
Plated copper and gem stone

TECHNICAL INFORMATION

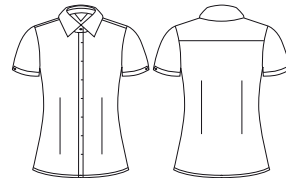
STYLE SPECIFICATIONS FOR OUR BOULEVARD RANGE OF SHIRTING & ACCESSORIES



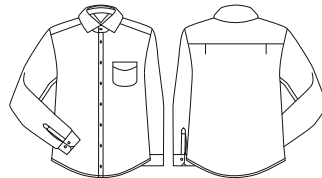
LADIES AND MENS NEWPORT



Newport Ladies 3/4 Sleeve Shirt	
Style	42511 NEW
Sizes	4 - 26
Colours	Eden Green, French Navy, Purple Reign
Pages	2, 5, 37, 39



Newport Ladies Short Sleeve Shirt	
Style	42512 NEW
Sizes	4 - 26
Colours	Eden Green, French Navy, Purple Reign
Pages	4, 32

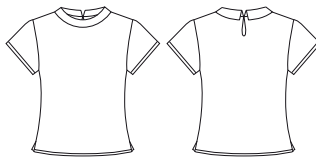


Newport Mens Long Sleeve Shirt	
Style	42520 NEW
Sizes	XS - 5XL
Colours	Eden Green, French Navy, Purple Reign
Pages	2, 5, 31, 42



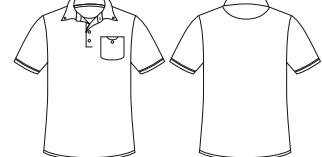
Newport Mens Short Sleeve Shirt	
Style	42522 NEW
Sizes	XS - 5XL
Colours	Eden Green, French Navy, Purple Reign
Pages	5

LADIES LILA



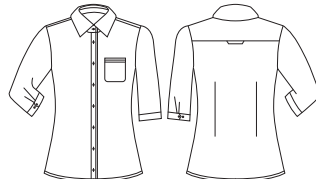
Lila Ladies Spot Print Top	
Style	42312 NEW
Sizes	4 - 26
Colours	Blue, Pink
Pages	6, 27, 36

MENS OLIVER



Oliver Mens Short Sleeve Polo	
Style	42622 NEW
Sizes	XS - 5XL
Colours	Eden Green, French Navy, Purple Reign
Pages	7, 32

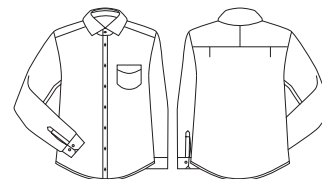
LADIES AND MENS CALAIS



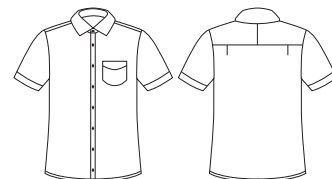
Calais Ladies 3/4 Sleeve Shirt	
Style	41721
Sizes	4 - 26
Colours	Turkish Blue, Purple Reign
Pages	8, 38



Calais Ladies Short Sleeve Shirt	
Style	41722
Sizes	4 - 26
Colours	Turkish Blue, Purple Reign
Pages	9

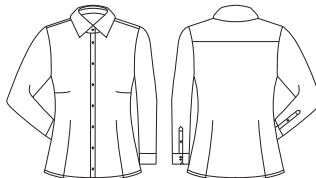


Calais Mens Long Sleeve Shirt	
Style	41710
Sizes	XS - 5XL
Colours	Turkish Blue, Purple Reign
Pages	9

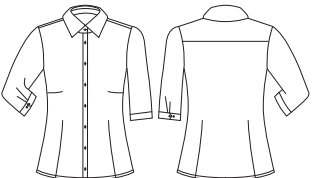


Calais Mens Short Sleeve Shirt	
Style	41712
Sizes	XS - 5XL
Colours	Turkish Blue, Purple Reign
Pages	9

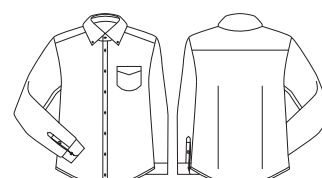
LADIES AND MENS HERNE BAY



Herne Bay Ladies Long Sleeve Shirt	
Style	41820
Sizes	4 - 26
Colours	White/Turkish Blue, White/Purple Reign
Pages	10



Herne Bay Ladies 3/4 Sleeve Shirt	
Style	41821
Sizes	4 - 26
Colours	White/Turkish Blue, White/Purple Reign
Pages	10



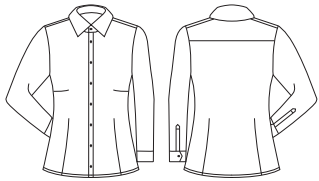
Herne Bay Mens Long Sleeve Shirt	
Style	41810
Sizes	XS - 5XL
Colours	White/Turkish Blue, White/Purple Reign
Pages	11

TECHNICAL INFORMATION

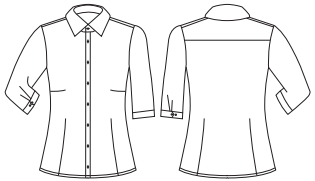
STYLE SPECIFICATIONS FOR OUR BOULEVARD RANGE OF SHIRTING & ACCESSORIES



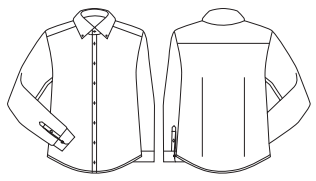
LADIES AND MENS FIFTH AVENUE



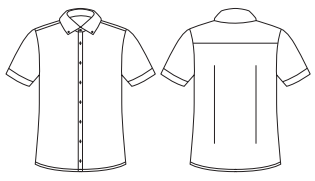
Fifth Avenue Ladies Long Sleeve Shirt	
Style	40110
Sizes	4 - 26
Colours	Patriot Blue, Alaskan Blue, Dynasty Green, Melon
Pages	12, 27



Fifth Avenue Ladies 3/4 Sleeve Shirt	
Style	40111
Sizes	4 - 26
Colours	Patriot Blue, Alaskan Blue, Dynasty Green, Melon
Pages	13

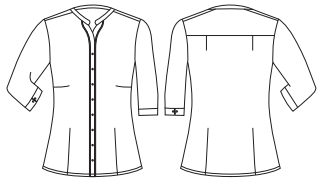


Fifth Avenue Mens Long Sleeve Shirt	
Style	40120
Sizes	XS - 5XL
Colours	Patriot Blue, Alaskan Blue, Dynasty Green, Melon
Pages	13, 28, 43

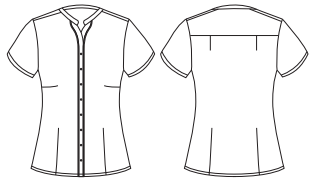


Fifth Avenue Mens Short Sleeve Shirt	
Style	40122
Sizes	XS - 5XL
Colours	Patriot Blue, Alaskan Blue, Dynasty Green, Melon
Pages	13

LADIES BORDEAUX

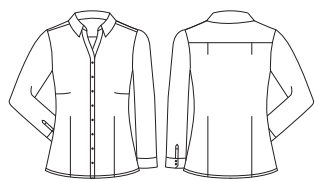


Bordeaux Ladies 3/4 Sleeve Shirt	
Style	40114
Sizes	4 - 26
Colours	Patriot Blue, Alaskan Blue, Dynasty Green, Melon
Pages	15

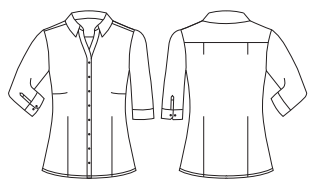


Bordeaux Ladies Short Sleeve Shirt	
Style	40112
Sizes	4 - 26
Colours	Patriot Blue, Alaskan Blue, Dynasty Green, Melon
Pages	14, 39

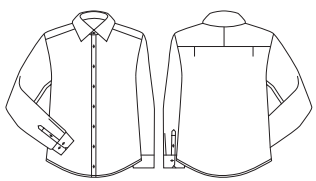
LADIES AND MENS HUDSON



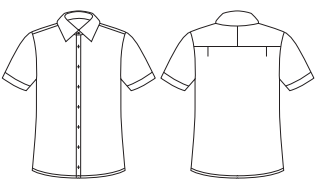
Hudson Ladies Long Sleeve Shirt	
Style	40310
Sizes	4 - 26
Colours	Patriot Blue, White, Dynasty Green, Melon
Pages	17, 28, 36



Hudson Ladies 3/4 Sleeve Shirt	
Style	40311
Sizes	4 - 26
Colours	Patriot Blue, White, Dynasty Green, Melon
Pages	16

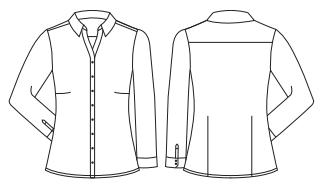


Hudson Mens Long Sleeve Shirt	
Style	40320
Sizes	XS - 5XL
Colours	Patriot Blue, White, Dynasty Green, Melon
Pages	17, 35, 41

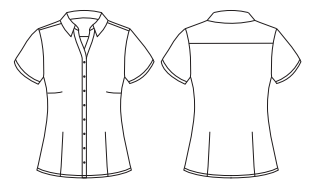


Hudson Mens Short Sleeve Shirt	
Style	40322
Sizes	XS - 5XL
Colours	Patriot Blue, White, Dynasty Green, Melon
Pages	17

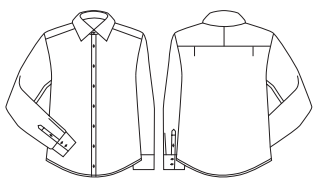
LADIES AND MENS VERMONT



Vermont Ladies Long Sleeve Shirt	
Style	40210
Sizes	4 - 26
Colours	Patriot Blue, Alaskan Blue, Dynasty Green, Melon
Pages	18, 36

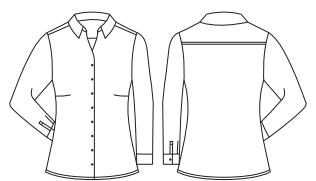


Vermont Ladies Short Sleeve Shirt	
Style	40212
Sizes	4 - 26
Colours	Patriot Blue, Alaskan Blue, Dynasty Green, Melon
Pages	19, 32

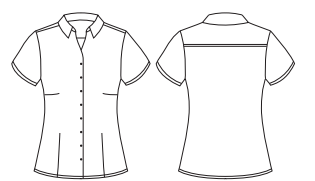


Vermont Mens Long Sleeve Shirt	
Style	40220
Sizes	XS - 5XL
Colours	Patriot Blue, Alaskan Blue, Dynasty Green, Melon
Pages	18, 27, 37, 43

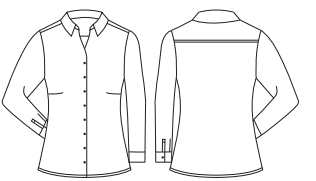
LADIES SOLANDA



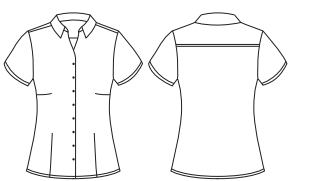
Solanda Ladies Plain Long Sleeve Shirt	
Style	40410
Sizes	4 - 26
Colours	Patriot Blue, Alaskan Blue, Dynasty Green, Melon, White
Pages	20, 35



Solanda Ladies Plain Short Sleeve Shirt	
Style	40412
Sizes	4 - 26
Colours	Patriot Blue, Alaskan Blue, Dynasty Green, Melon, White
Pages	20, 37

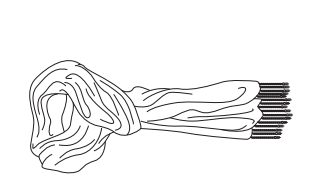


Solanda Ladies Print Long Sleeve Shirt	
Style	40510
Sizes	4 - 26
Colours	Patriot Blue, Alaskan Blue, Dynasty Green, Melon
Pages	21

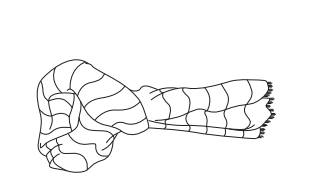


Solanda Ladies Print Short Sleeve Shirt	
Style	40512
Sizes	4 - 26
Colours	Patriot Blue, Alaskan Blue, Dynasty Green, Melon
Pages	21, 31

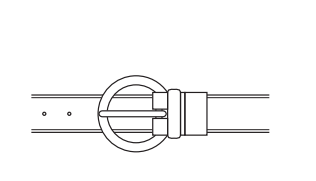
LADIES AND MENS ACCESSORIES



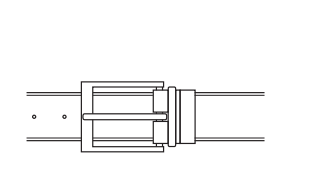
Ladies Monotone Knitted Scarf	
Style	99000
Sizes	One Size
Colours	Patriot Blue, Alaskan Blue, Dynasty Green, Melon
Pages	22, 28



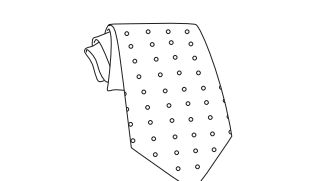
Ladies Two Tone Scarf	
Style	99001
Sizes	One Size
Colours	Melon/Patriot Blue, Melon/Alaskan Blue, Melon/Dynasty Green, Melon/Purple Reign
Pages	22, 39



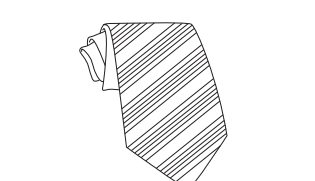
Ladies Leather Reversible Belt	
Style	99200
Sizes	8, 12, 16, 20, 24, 28 - cut to size
Colours	Black/Red
Pages	22



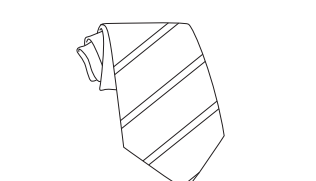
Mens Leather Reversible Belt	
Style	99300
Sizes	72-97, 102-127 - cut to size
Colours	Black/Brown
Pages	23, 32, 41



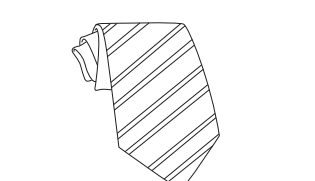
Mens Spot Tie	
Style	99100
Sizes	One Size
Colours	Patriot Blue, Alaskan Blue, Dynasty Green, Melon
Pages	17, 23



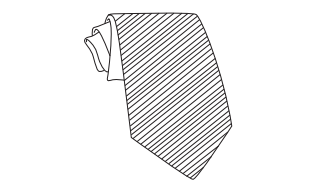
Mens Self Stripe Tie	
Style	99101
Sizes	One Size
Colours	Patriot Blue, Alaskan Blue, Dynasty Green, Melon, Grey
Pages	23, 27



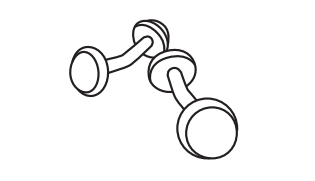
Mens Single Contrast Stripe Tie	
Style	99102
Sizes	One Size
Colours	Patriot Blue, Alaskan Blue, Dynasty Green, Melon
Pages	5, 11, 23, 28, 43



Mens Wide Contrast Stripe Tie	
Style	99103
Sizes	One Size
Colours	Patriot Blue, Alaskan Blue, Dynasty Green, Melon
Pages	13, 23, 31




Mens Slim Tie	
Style	99104
Sizes	One Size
Colours	Black, Patriot Blue, Alaskan Blue, Melon, Dynasty Green, Purple Reign
Pages	2, 9, 18, 23, 35, 41, 43



Unisex Cufflinks	
Style	99400
Sizes	One Size
Colours	Black, Alaskan Blue, Melon, Dynasty Green, Purple Reign
Pages	23

COMFORT SMART SUITING FABRICS

NEW FABRIC TECHNOLOGY MEETS WORKPLACE DEMANDS




CHARCOAL

**ROCOCO
KNIT SOFT SUITING**

74% Polyester 22% Viscose 4% Elastane







Machine Wash Cold



Do Not Bleach



Line Dry



Do Not Tumble Dry




Iron Medium Heat

Care Instructions

Pants and Skirts - Machine wash cold. Gentle cycle with like colours. Do not soak. Do not bleach. Do not tumble dry. Line dry in shade. Warm iron. Dry-cleanable.


Jackets - Dry clean only 30c (P).




GREY


**ROCOCO
TEXTURED YARN DYED STRETCH**

74% Polyester 22% Viscose 4% Elastane







Machine Wash Cold



Do Not Bleach



Line Dry



Do Not Tumble Dry

Care Instructions

Pants and Skirts - Machine wash cold. Gentle cycle with like colours. Do not soak. Do not bleach. Do not tumble dry. Line dry in shade. Cool iron. Dry-cleanable.

Jackets - Dry clean only 30c (P).



NAVY



CHARCOAL



BLACK

COMFORT WOOL STRETCH

74% Polyester 22% Viscose 4% Elastane





Hand Wash



Do Not Bleach



Line Dry



Do Not Tumble Dry



Iron Medium Heat

Care Instructions

Pants and Skirts - Machine wash on wool cycle or hand-wash using recommended wool detergent. Wash with similar colours. Rinse well. Do not bleach, soak, tumble dry. Line dry in shade. Warm iron (wool settings). Recommend dry clean 30c (P).

Jackets and Vests - Dry clean only 30c (P).



NAVY



CHARCOAL



BLACK

COOL STRETCH PLAIN

92% Polyester 8% Bamboo Charcoal











Machine Wash Warm



Do Not Bleach



Line Dry



Do Not Tumble Dry



Iron Medium Heat

Care Instructions

Pants and Skirts - Warm or cold machine wash. Wash with similar colours. Do not bleach. Do not tumble dry. Line dry in shade. Warm iron. Recommend dry clean 30c (P).

Jackets and Vests - Dry clean only 30c (P).



NAVY



CHARCOAL



BLACK

COOL STRETCH PINSTRIPE

92% Polyester 8% Bamboo Charcoal











Machine Wash Warm



Do Not Bleach



Line Dry



Do Not Tumble Dry



Iron Medium Heat

Care Instructions

Pants and Skirts - Warm or cold machine wash. Wash with similar colours. Do not bleach. Do not tumble dry. Line dry in shade. Warm iron. Recommend dry clean 30c (P).

Jackets and Vests - Dry clean only 30c (P).

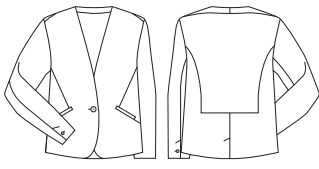
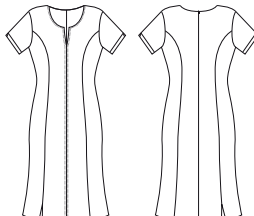
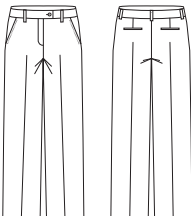
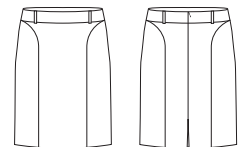
Note - When ironing, use a warm iron and recommended steam setting. Otherwise iron inside out or use a cover cloth. (A hot iron will shine the polyester yarn in the fabric). We recommend Qualified Professional Laundering for long term care of the Comfort Wool Stretch Suiting garments. Line Dry. DO NOT TUMBLE DRY your garment. We recommend drying in shade. Direct sunlight will accelerate fading of garment.

TECHNICAL INFORMATION

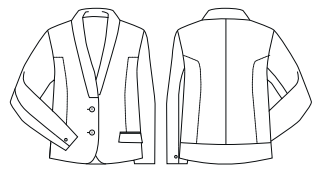
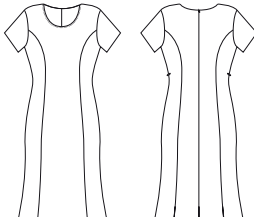
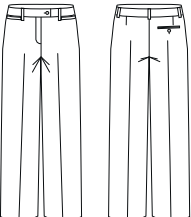
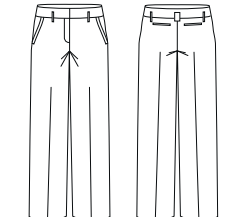
STYLE SPECIFICATIONS FOR THE RANGES OF ROCOCO SUITING

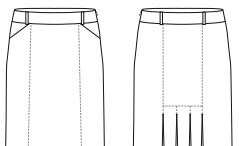


LADIES ROCOCO KNIT SOFT SUITING

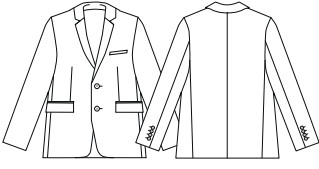
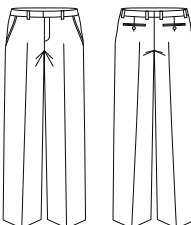
			
Ladies Single Button Collarless Jacket	Ladies Open Neck Dress	Ladies Tapered Leg Pant	Ladies Panelled Skirt with Rear Split
Style61610	Style30620	Style10630	Style20640
Sizes4 - 26	Sizes4 - 26	Sizes4 - 26	Sizes4 - 26
ColoursCharcoal	ColoursCharcoal	ColoursCharcoal	ColoursCharcoal
Pages27, 38, 44, 46	Pages39, 45	Pages27, 38, 44, 47	Pages27, 46, 47

LADIES ROCOCO TEXTURED YARN DYED STRETCH SUITING

			
Ladies Cropped Jacket	Ladies Short Sleeve Shift Dress	Ladies Relaxed Fit Pant	Ladies Contour Band Pant
Style60315	Style30312	Style10311	Style10320
Sizes4 - 26	Sizes4 - 22	Sizes4 - 26	Sizes4 - 26
ColoursGrey	ColoursGrey	ColoursGrey	ColoursGrey
Pages28, 49, 51	Pages28, 48, 50	Pages51, 52	Pages28, 39, 49, 52


Ladies Feature Pleat Skirt
Style20316
Sizes4 - 26
ColoursGrey
Pages50

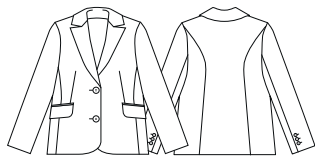
MENS ROCOCO TEXTURED YARN DYED STRETCH SUITING

	
Mens Slimline Jacket	Mens Slimline Pant
Style80313	Style70313
Sizes87R - 127R	Sizes72R - 112R
ColoursGrey	ColoursGrey
Pages28, 48, 52	Pages28, 43, 48, 52, 53

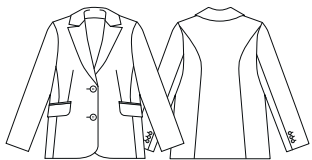
TECHNICAL INFORMATION

STYLE SPECIFICATIONS FOR OUR BOULEVARD RANGE OF SHIRTING & ACCESSORIES

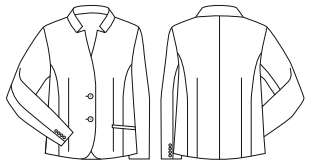
LADIES COMFORT WOOL STRETCH SUITING



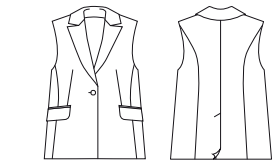
Ladies Short - Mid Length Jacket	
Style	64011
Sizes	4 - 26
Colours	Black, Navy, Charcoal
Pages	55, 58, 61



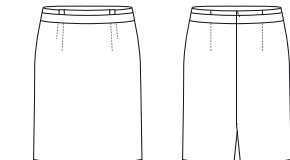
Ladies Longline Jacket	
Style	64012
Sizes	4 - 26
Colours	Black, Navy, Charcoal
Pages	57



Ladies Short Jacket with Reverse Lapel	
Style	64013
Sizes	4 - 26
Colours	Black, Navy, Charcoal
Pages	56, 62, 65

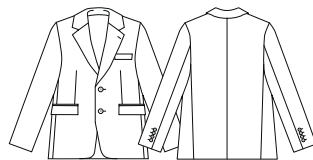


Ladies Longline Sleeveless Jacket	
Style	64014
Sizes	4 - 26
Colours	Black, Navy, Charcoal
Pages	59

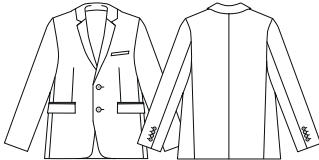


Ladies Waisted Pencil Skirt	
Style	24016
Sizes	4 - 20
Colours	Black, Navy, Charcoal
Pages	39, 64

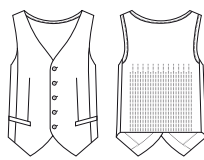
MENS COMFORT WOOL STRETCH SUITING



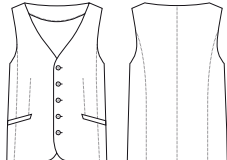
Mens 2 Button Jacket	
Style	84011
Sizes	87R - 142R
Colours	Black, Navy, Charcoal
Pages	27, 67, 69



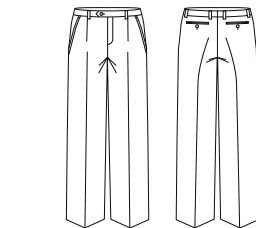
Mens Slimline Jacket	
Style	84013 NEW
Sizes	87R - 127R
Colours	Black, Navy, Charcoal
Pages	41, 55, 66, 68



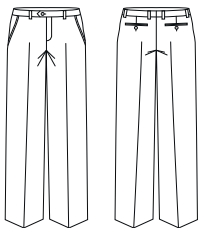
Mens Peaked Vest with Knitted Back	
Style	94011
Sizes	87R - 142R
Colours	Black, Navy, Charcoal
Pages	67



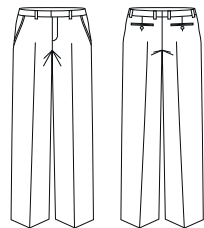
Mens Longline Vest	
Style	94012
Sizes	87R - 142R
Colours	Black, Navy, Charcoal
Pages	57



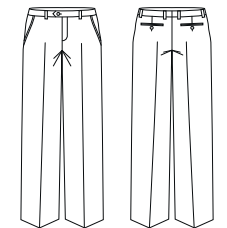
Mens One Pleat Pant	
Style	74011
Sizes	72R - 122R, 107S - 127S
Colours	Black, Navy, Charcoal
Pages	68



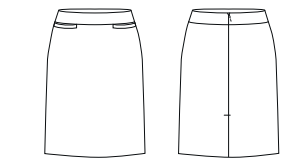
Mens Flat Front Pant	
Style	74012
Sizes	72R - 122R
Colours	Black, Navy, Charcoal
Pages	27, 68



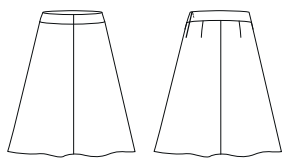
Mens Slimline Pant	
Style	74013 NEW
Sizes	72R - 112R
Colours	Black, Navy, Charcoal
Pages	41, 55, 66, 67, 68



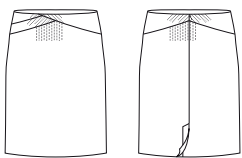
Mens Adjustable Waist Pant	
Style	74014
Sizes	72R - 127R
Colours	Black, Navy, Charcoal
Pages	69



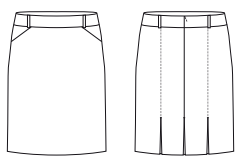
Ladies Relaxed Fit Lined Skirt	
Style	24011
Sizes	4 - 26
Colours	Black, Navy, Charcoal
Pages	65



Ladies 3/4 Length Fluted Lined Skirt	
Style	24013
Sizes	4 - 26
Colours	Black, Navy, Charcoal
Pages	64



Ladies Chevron Band Skirt	
Style	24014
Sizes	4 - 26
Colours	Black, Navy, Charcoal
Pages	55, 65

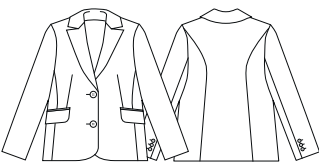


Ladies Multi Pleat Skirt	
Style	24015
Sizes	4 - 26
Colours	Black, Navy, Charcoal
Pages	56, 64

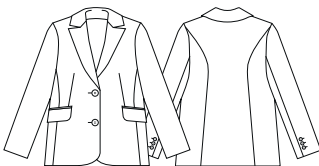
TECHNICAL INFORMATION

STYLE SPECIFICATIONS FOR THE RANGE OF COOL STRETCH PLAIN SUITING

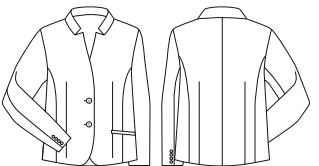
LADIES COOL STRETCH PLAIN SUITING



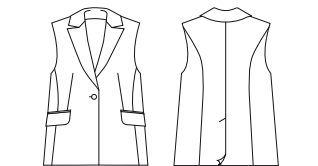
Ladies Short - Mid Length Jacket	
Style	60111
Sizes	4 - 26
Colours	Black, Navy, Charcoal
Pages	72, 80



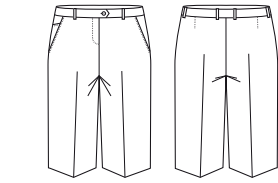
Ladies Longline Jacket	
Style	60112
Sizes	4 = 26
Colours	Black, Navy, Charcoal
Pages	31, 73, 79



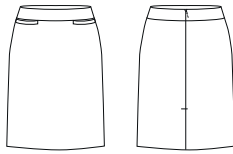
Ladies Short Jacket with Reverse Lapel	
Style	60113
Sizes	4 - 26
Colours	Black, Navy, Charcoal
Pages	72



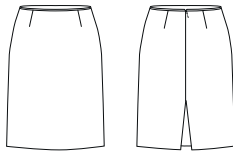
Ladies Longline Sleeveless Jacket	
Style	60114
Sizes	4 - 26
Colours	Black, Navy, Charcoal
Pages	32, 70, 74



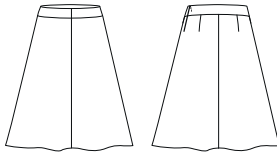
Ladies Adjustable Waist Short	
Style	10119
Sizes	4 - 30
Colours	Black, Navy, Charcoal
Pages	73, 81



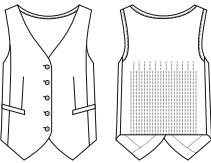
Ladies Relaxed Fit Lined Skirt	
Style	20111
Sizes	4 - 26
Colours	Black, Navy, Charcoal
Pages	72, 82



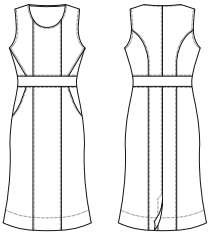
Ladies Bandless Lined Skirt	
Style	20112
Sizes	4 - 26
Colours	Black, Navy, Charcoal
Pages	82



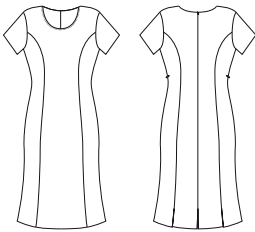
Ladies 3/4 Length Fluted Lined Skirt	
Style	20113
Sizes	4 - 26
Colours	Black, Navy, Charcoal
Pages	82



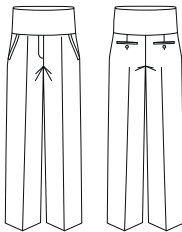
Ladies Peaked Vest with Knitted Back	
Style	50111
Sizes	4 - 26
Colours	Black, Navy, Charcoal
Pages	75



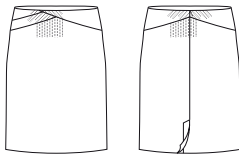
Ladies Sleeveless Side Zip Dress	
Style	30111
Sizes	4 - 22
Colours	Black, Navy, Charcoal
Pages	70, 77



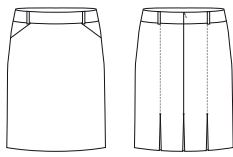
Ladies Short Sleeve Shift Dress	
Style	30112
Sizes	4 - 22
Colours	Black, Navy, Charcoal
Pages	76



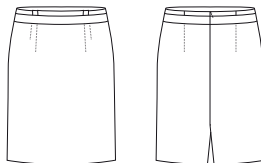
Ladies Maternity Pant	
Style	10100
Sizes	S - XL
Colours	Black, Navy, Charcoal
Pages	81



Ladies Chevron Band Skirt	
Style	20114
Sizes	4 - 26
Colours	Black, Navy, Charcoal
Pages	83

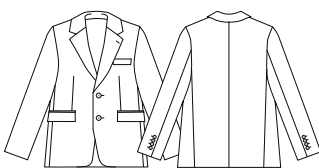


Ladies Multi Pleat Skirt	
Style	20115
Sizes	4 - 26
Colours	Black, Navy, Charcoal
Pages	31, 73, 83

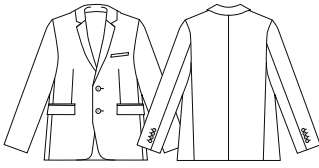


Ladies Waisted Pencil Skirt	
Style	20116
Sizes	4 - 20
Colours	Black, Navy, Charcoal
Pages	32, 83

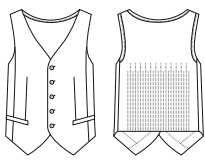
MENS COOL STRETCH PLAIN SUITING



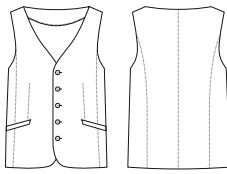
Mens 2 Button Jacket	
Style	80111
Sizes	87R - 142R
Colours	Black, Navy, Charcoal
Pages	31, 41, 70, 84, 88



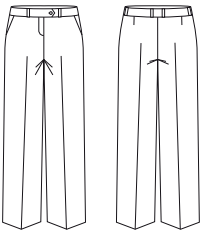
Mens Slimline Jacket	
Style	80113
Sizes	87R -127R
Colours	Black, Navy, Charcoal
Pages	32, 42, 85



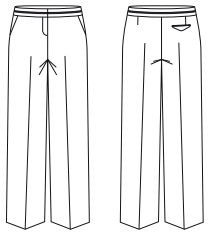
Mens Peaked Vest with Knitted Back	
Style	90111
Sizes	87R - 142R
Colours	Black, Navy, Charcoal
Pages	84, 86



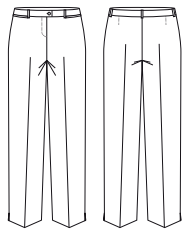
Mens Longline Vest	
Style	90112
Sizes	87R - 142R
Colours	Black, Navy, Charcoal
Pages	43, 87



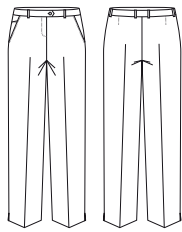
Ladies Adjustable Waist Pant	
Style	10115
Sizes	4 - 30
Colours	Black, Navy, Charcoal
Pages	80



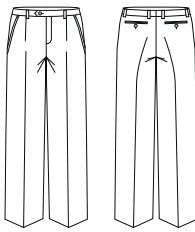
Ladies Piped Band Pant	
Style	10116
Sizes	4 - 26
Colours	Black, Navy, Charcoal
Pages	74, 79



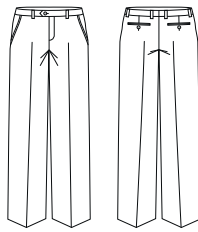
Ladies Slim Leg Pant	
Style	10117
Sizes	4 - 20
Colours	Black, Navy, Charcoal
Pages	78



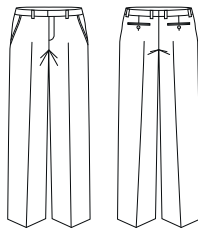
Ladies Louise Pant	
Style	10118
Sizes	4 - 30
Colours	Black, Navy, Charcoal
Pages	31, 80



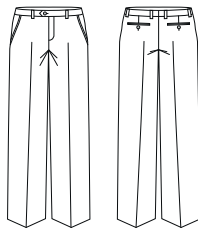
Mens One Pleat Pant	
Style	70111
Sizes	72R - 112R, 107S - 127S
Colours	Black, Navy, Charcoal
Pages	31, 35, 41, 43, 88



Mens Flat Front Pant	
Style	70112
Sizes	72R - 112R, 107S - 127S
Colours	Black, Navy, Charcoal
Pages	70, 84, 86, 87, 88



Mens Slimline Pant	
Style	70113
Sizes	72R - 112R
Colours	Black, Navy, Charcoal
Pages	32, 42, 85, 89

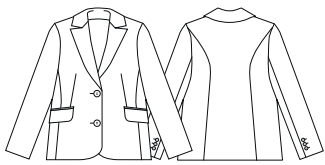


Mens Adjustable Waist Pant	
Style	70114
Sizes	72R - 112R, 107S - 127S
Colours	Black, Navy, Charcoal
Pages	39

TECHNICAL INFORMATION

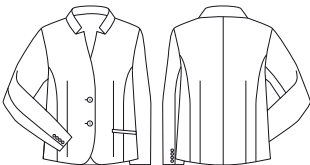
STYLE SPECIFICATIONS FOR THE RANGE OF COOL STRETCH PINSTRIPE SUITING

LADIES COOL STRETCH PINSTRIPE SUITING



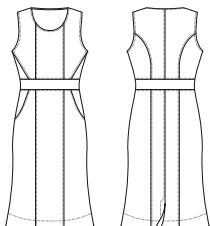
Ladies Short - Mid Length Jacket

Style	60211
Sizes	4 - 26
Colours	Black, Navy, Charcoal
Pages	93, 95



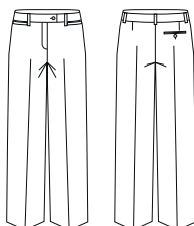
Ladies Short Jacket with Reverse Lapel

Style	60213
Sizes	4 - 26
Colours	Black, Navy, Charcoal
Pages	35, 91, 92



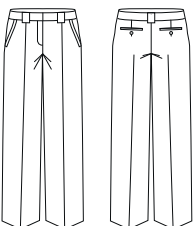
Ladies Sleeveless Side Zip Dress

Style	30211
Sizes	4 - 22
Colours	Black, Navy, Charcoal
Pages	35, 92, 94



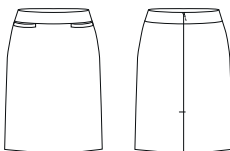
Ladies Relaxed Fit Pant

Style	10211
Sizes	4 - 26
Colours	Black, Navy, Charcoal
Pages	95



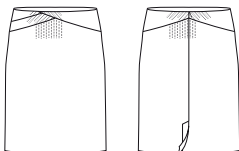
Ladies Hipster Fit Pant

Style	10212
Sizes	4 - 24
Colours	Black, Navy, Charcoal
Pages	91, 95



Ladies Relaxed Fit Lined Skirt

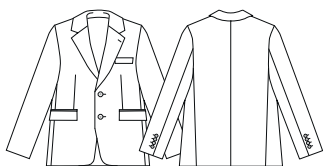
Style	20211
Sizes	4 - 26
Colours	Black, Navy, Charcoal
Pages	95



Ladies Chevron Band Skirt

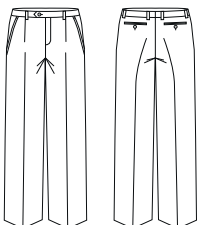
Style	20214
Sizes	4 - 26
Colours	Black, Navy, Charcoal
Pages	35, 93, 95

MENS COOL STRETCH PINSTRIPE SUITING



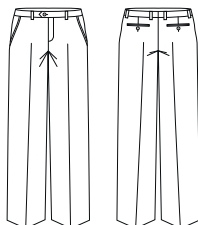
Mens 2 Button Jacket

Style	80211
Sizes	92R - 142R
Colours	Black, Navy, Charcoal
Pages	35, 91, 96



Mens One Pleat Pant

Style	70211
Sizes	77R - 122R
Colours	Black, Navy, Charcoal
Pages	35, 97



Mens Flat Front Pant

Style	70212
Sizes	77R - 122R
Colours	Black, Navy, Charcoal
Pages	91, 96

ADVATEX

BIZ CORPORATES HEALTHWEAR GETS THE ADVANTAGE OF BACTERIA CONTROL

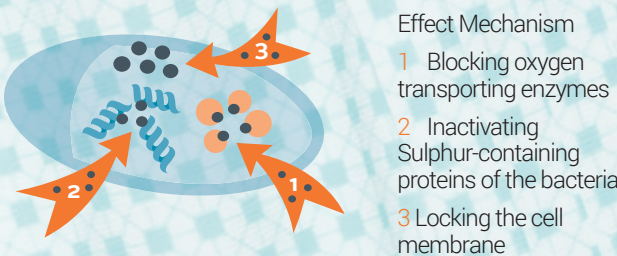
ADVATEX
ADVANCED PROTECTION

ADVATEX by Biz Corporates heralds a new era in bacteria control. Designed specifically for Health and Aged Care environments, ADVATEX limits the spread of bacteria from caregiver to patient via their workplace apparel.

The technology behind ADVATEX was developed from the long-proven history that the element Silver has a bacteriostatic effect. To create ADVATEX, the element Silver has been converted into a highly efficient, microscopic Silver Compound which is then applied to our textiles via a unique coating procedure. Once coated, the ADVATEX fabric is able to not only resist bacteria, but actively eliminate it.

How does ADVATEX work?

Micro-structured titanium dioxide is the carrier for the anti-bacterial active component 'silver chloride'. In the presence of moisture (e.g. sweat) Silver Ions with 'anti-bacterial effect' are set free.



Note: This is not approved by the USA EPA and hence not valid for the USA.

Absolute Product Safety

Cryotoxicity test shows silver ion technology has no influence on the natural balance of the skin. The fresh effect develops in the textile, leaving the skin unaffected and fully functional.

Environment Care

ADVATEX, for effectiveness, only requires using low temperature wash thus using less energy and preserving CO² balance. The active Silver ingredient cannot be washed out of the textile. Added benefit of using ADVATEX is the washing machine stays clean.

ADVATEX combines the easy-care benefits, style and comfort you'd expect from Biz Corporates with unbeatable bacterial control.



INFECTION
CONTROL



EASY
CARE

The 8 bacteria tested for the ADVATEX range is as follows:

- Staphylococcus aureus
- Methicillin resistant Staphylococcus aureus (MRSA)
- Escherichia coli (Ecoli)
- Klebsiella pneumonia
- Listeria monocytogenes
- Enterobacter aerogenes
- Pseudomonas aeruginosa
- Corynebacterium xerosis

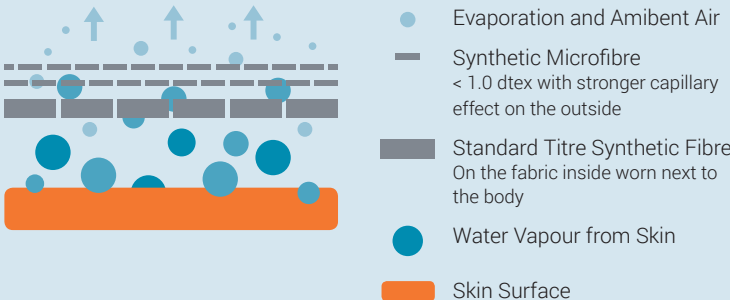
ADVATEX will control the above bacteria strains with an effectiveness of between 80% and 99%. Textiles are tested at 40°C across 40+ washes, knitwear is tested at 40°C across 30+ washes. Bacterial control, as described above, for the life of the garment can be extended by using an ADVATEX Booster additive.

ADVATEX also includes the application of an 'easy care' technology for cellulosic fibre garments.

ADVATEXCOOL

ADVATEX COOL by Biz Corporates introduces multi-functionality within its Health and Aged Care range with the addition of **Optimum Cool**, maximizing the absorption of moisture from the skin creating a 'body cool' environment, whilst providing anti-bacterial function.

Styles marked **ADVATEXCOOL** have the Optimum Cool functionality built into the fibres of the garment.



ADVATEX

UNIQUE FABRICS HERALDS A NEW ERA OF BACTERIA CONTROL IN APPAREL

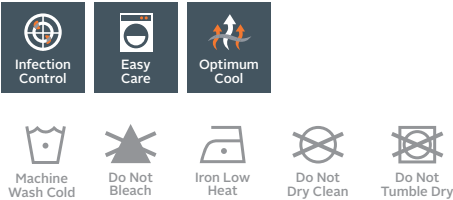


ADVATEX COOL LEAH TOP

95% Polyester 5% Elastane, 215gsm
Antimicrobial & Cool Effect

Ladies semi-fitted round neck button front stretch polyester knit top in diamond design print.

Care Instructions
Wash before wearing. Machine wash cold with like colours. Gentle cycle. Do not soak. Do not bleach. Line dry in shade. Do not tumble dry. Cool iron. Do not dry clean.

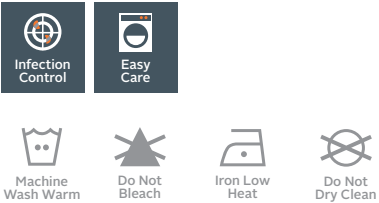


ADVATEX TONI SHIRTS

100% Polyester

Ladies semi-fitted open neck printed stripe shirt.

Care Instructions
Wash before wearing. Machine wash warm. Gentle cycle with like colours. Do not soak. Do not bleach. Cool iron. Do not dry clean.

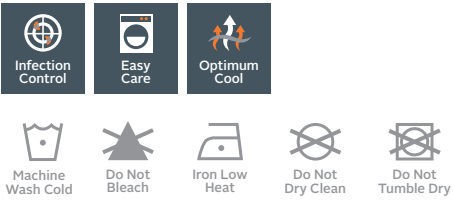


ADVATEX COOL SANDY TOP

95% Polyester 5% Elastane, 215gsm
Antimicrobial & Cool Effect

Ladies semi-fitted open neck pleat front stretch polyester knit top in link design print.

Care Instructions
Wash before wearing. Machine wash cold with like colours. Gentle cycle. Do not soak. Do not bleach. Line dry in shade. Do not tumble dry. Cool iron. Do not dry clean.

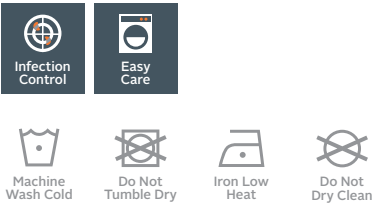


ADVATEX VARESA KNITWEAR

50% Wool 50% Acrylic

Ladies contemporary styling double knit.
Mens contemporary styling double knit.

Care Instructions
Wash before wearing. Machine wash cold on wool cycle using recommended wool detergent. Wash with like colours. Do not wring, reshape. Dry flat. Warm iron over slightly damp cloth. Do not tumble dry. Do not dry clean.

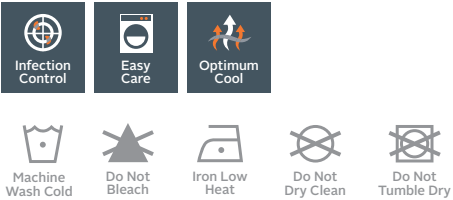


ADVATEX COOL ELLA TOP

95% Polyester 5% Elastane, 215gsm
Antimicrobial & Cool Effect

Ladies semi-fitted open neck pleat front stretch polyester knit top in diamond design print.

Care Instructions
Wash before wearing. Machine wash cold with like colours. Gentle cycle. Do not soak. Do not bleach. Line dry in shade. Do not tumble dry. Cool iron. Do not dry clean.

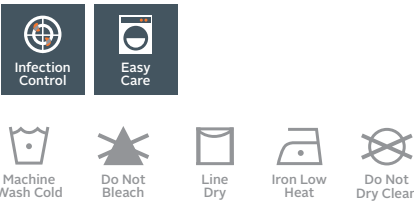


ADVATEX SWINDON POLOS

60% Cotton 40% Polyester, 175gsm

Ladies contemporary styling cotton back knitted polo.
Mens contemporary styling cotton back knitted polo.

Care Instructions
Wash before wearing. Machine wash cold. Wash inside out with like colours. Do not soak. Do not bleach. Line dry in shade. Cool iron. Do not dry clean.

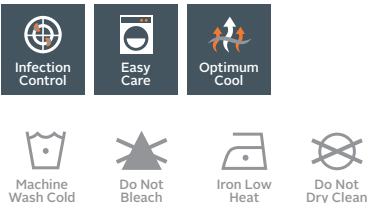


ADVATEX COOL MAE & ABBY TOPS

95% Polyester 5% Elastane, 215gsm
Antimicrobial & Cool Effect

Ladies semi-fitted stretch knit top.

Care Instructions
Wash before wearing. Machine wash cold with like colours. Gentle cycle. Do not soak. Do not bleach. Line dry in shade. Do not tumble dry. Cool iron. Do not dry clean.

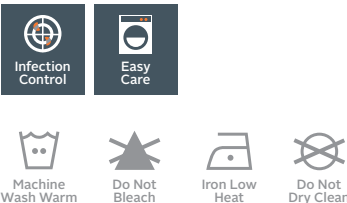


ADVATEX JOHNSON SCRUBS

65% Polyester 35% Cotton, 160gsm

Unisex loose fitting performance scrubs.

Care Instructions
Wash before wearing. Machine wash warm with like colours. Wash inside out. Do not soak. Only non-chlorine bleach when needed. Tumble dry low. Warm iron. Do not dry clean.

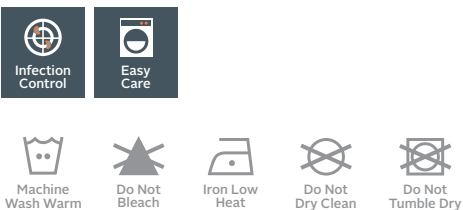


ADVATEX LINDSEY SHIRTS

60% Polyester 40% Cotton

Ladies semi-fitted open neck yarn dyed stripe shirt.
Mens executive-fit yarn dyed stripe shirt.

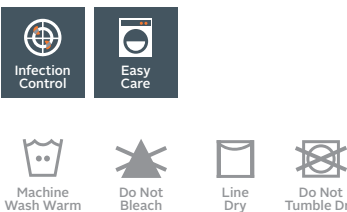
Care Instructions
Wash before wearing. Machine wash warm. Gentle cycle with like colours. Do not soak. Do not bleach. Do not tumble dry. Line dry in shade. Cool iron. Do not dry clean.



ADVATEX SUITING

79% Polyester 17% Viscose 4% Elastane

Care Instructions
Pants and Skirts - Warm gentle machine wash. Wash with similar colours. Do not bleach, soak, tumble dry. Line dry in shade. Warm iron. Do not iron over 150°C. Do not dry clean.

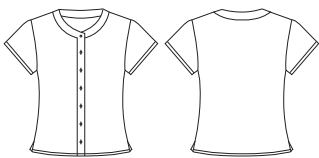


TECHNICAL INFORMATION

STYLE SPECIFICATIONS FOR THE RANGE OF ADVATEX GARMENTS

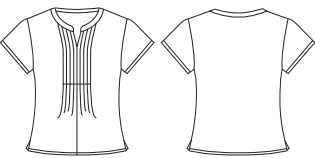


LADIES ADVATEX COOL



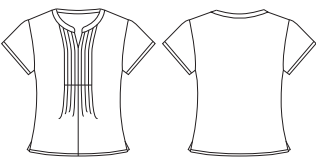
Ladies Leah Button Knit Top

Style	AC42912 NEW
Sizes	4 - 32
Colours	Navy, Delta Blue, Melon, Dynasty Green
Pages	32, 100, 101



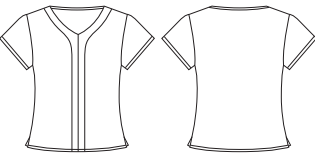
Ladies Sandy Linear Pleat Knit Top

Style	AC42412 NEW
Sizes	4 - 32
Colours	Navy, Delta Blue, Melon, Dynasty Green
Pages	102



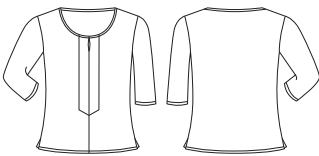
Ladies Ella Diamond Pleat Knit Top

Style	AC42812 NEW
Sizes	4 - 32
Colours	Navy, Delta Blue, Melon, Dynasty Green
Pages	103



Ladies Mae Short Sleeve Knit Top

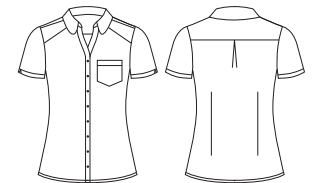
Style	AC41412 NEW
Sizes	4 - 32
Colours	Blue, White, Patriot Blue, Dynasty Green, Melon, Black
Pages	39, 107



Ladies Abby 3/4 Sleeve Knit Top

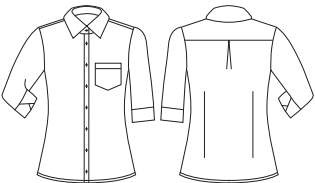
Style	AC41511 NEW
Sizes	4 - 32
Colours	Blue, White, Patriot Blue, Dynasty Green, Melon, Black
Pages	31, 37, 107

LADIES ADVATEX



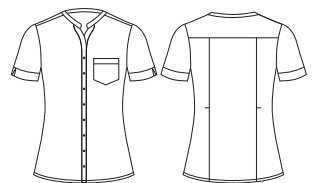
Ladies Lindsey Short Sleeve Shirt

Style	A41012
Sizes	4 - 32
Colours	Blue, Melon, Dynasty Green
Pages	105



Ladies Lindsey 3/4 Sleeve Shirt

Style	A41011
Sizes	4 - 32
Colours	Blue, Melon, Dynasty Green
Pages	104



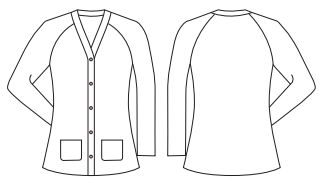
Ladies Toni Short Sleeve Shirt

Style	A41312
Sizes	4 - 32
Colours	Blue Melon, Dynasty Green
Pages	106



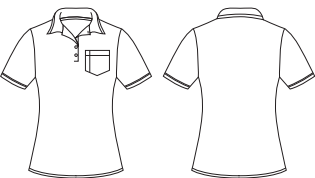
Ladies Varesa Vest

Style	A59513
Sizes	XS - 4XL
Colours	Navy, Charcoal
Pages	111



Ladies Varesa Cardigan

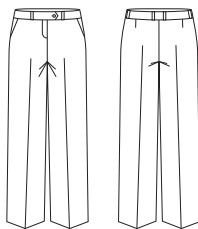
Style	A59510
Sizes	XS - 4XL
Colours	Navy, Charcoal
Pages	39, 110



Ladies Swindown Polo

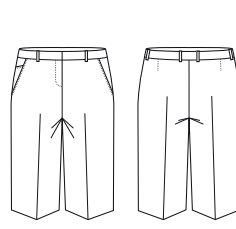
Style	A49012
Sizes	4 - 32
Colours	Navy/Blue, Navy/White, Navy/Dynasty Green, Navy/Melon
Pages	112

LADIES ADVATEX SUITING



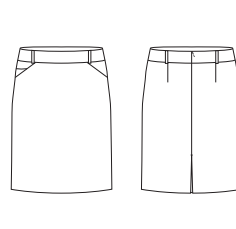
Ladies Adjustable Waist Pant

Style	A11515
Sizes	4 - 32
Colours	Black, Navy, Charcoal
Pages	108



Ladies Adjustable Waist Short

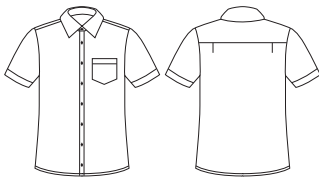
Style	A11519 NEW
Sizes	4 - 32
Colours	Black,Navy, Charcoal
Pages	109



Ladies Adjustable Waist Skirt

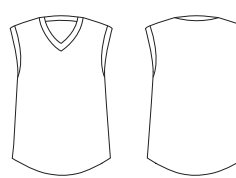
Style	A21510
Sizes	4 - 32
Colours	Black,Navy, Charcoal
Pages	108

MENS ADVATEX



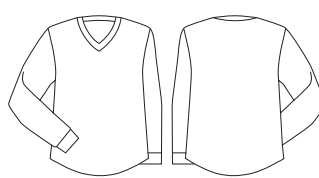
Mens Lindsey Short Sleeve Shirt

Style	A41022
Sizes	XS - 5XL
Colours	Blue, Melon, Dynasty Green
Pages	105



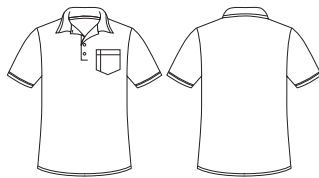
Mens Varesa Vest

Style	A59523
Sizes	XS - 3XL, 5XL
Colours	Navy, Charcoal
Pages	111



Mens Varesa Pullover

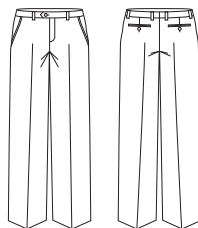
Style	A59520
Sizes	XS - 3XL, 5XL
Colours	Navy, Charcoal
Pages	43, 110



Mens Swindon Polo

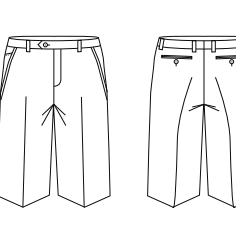
Style	A49022
Sizes	XS - 3XL, 5XL
Colours	Navy/Blue, Navy/White, Navy/Dynasty Green, Navy/Melon
Pages	112

MENS ADVATEX SUITING



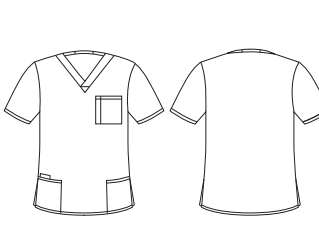
Mens Adjustable Waist Pant

Style	A71514
Sizes	72R - 127R
Colours	Black, Navy, Charcoal
Pages	108



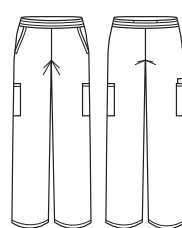
Mens Adjustable Waist Short

Style	A71519 NEW
Sizes	72R - 127R
Colours	Black, Navy, Charcoal
Pages	109



Unisex Johnson Scrub Top

Style	A59000
Sizes	XXS - 3XL, 5XL
Colours	Navy, Royal
Pages	113



Unisex Johnson Scrub Pant

Style	A59100
Sizes	XXS - 3XL, 5XL
Colours	Navy, Royal
Pages	113

NONE OF THE IMAGES IN THIS CATALOGUE MAY BE REPRODUCED WITHOUT THE WRITTEN PERMISSION OF THE PUBLISHER.
COLOURS ARE REPRODUCED AS CLOSELY AS PRINTING ALLOWS.

