



*The  
Perfect  
Dant*

**NOW  
AVAILABLE  
IN NAVY!**



Meet *Stella, Eve, and Kate* – a classic work pant available in three new body fits.

Designed to fit and flatter your unique shape in all the right places!

---

## *The Fit*

Curve, Classic or Slim – fits your shape for a flattering silhouette.

## *The Fabric*

Ultimate 4-way stretch Poly/Viscose/Elastane - keeps you looking professional and comfortable.

## *The Care*

Machine wash 'n' wear with next to no ironing required - need we say more?

## *The Style*

Midrise, straight leg. Wider waistband and low profile pockets - it all works together to enhance your best features!



STILL NOT SURE WHAT FIT  
TO CHOOSE?  
TAKE OUR QUICK QUIZ  
BEFORE YOU ORDER!

## WHEN YOU TRY ON PANTS:

DO THEY FIT  
YOUR WAIST  
BUT ARE  
OFTEN TOO  
TIGHT AT  
YOUR HIP  
AND THIGH?

YES

TRY

*Eve*

DO THEY  
GENERALLY  
FIT PRETTY  
WELL AT  
BOTH YOUR  
WAIST AND  
HIP?

YES

TRY

*Stella*

DO THEY FIT  
YOUR WAIST  
BUT ARE  
OFTEN TOO  
ROOMY AT  
YOUR HIP  
OR THIGH?

YES

TRY

*Kate*



*Eve*

Our curviest fit,  
Eve flatters your  
waist with more  
room at the  
hip and thigh.



*Stella*

Balanced curve  
between your  
waist and hip, our  
Stella pant will fit  
you just right.

AVAILABLE  
IN BLACK  
OR NAVY



*Kate*

Our Kate pant fits  
you at the waist and  
is slimmer through  
your hip and thigh.



Low profile front and back pockets - useful and flattering

Wider waistband to help support and flatten the tummy

Mid-rise - not too low or too high and always work appropriate

Lengthening, straight leg shape looks great with heels or flats

Premium 4 Way stretch fabric for superior comfort and less creasing

Generous 5cm hem allowance for optional added length

*The Stylish Details*

## The Fit Guide

A trusted pant is a uniform essential that never goes out of style, but often the challenge is finding a great fit that suits a variety of body shapes.

Our Perfect Pant helps overcome that challenge by offering three body fits in an everyday, classic style that will keep you looking professional – but more importantly, happy!

### SPECIFICATIONS

#### FABRIC

4-way Stretch Comfort  
62% Polyester, 35% Viscose,  
3% Elastane

#### COLOURS

Navy

Black

### HOW TO MEASURE

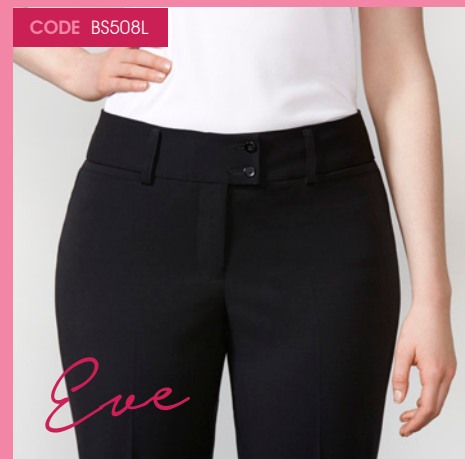
#### WAIST

Measure around the narrowest part of your torso.

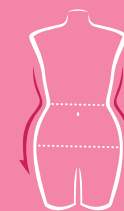
#### HIP

Stand with heels apart and measure around the fullest part of the hip and bottom area.

CODE BS508L



*Eve*



#### Eve is the perfect pant for you if:

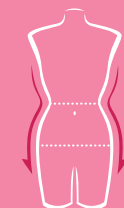
- You often find pants gaping at the waist
- You need more room through the seat and thigh
- You want a flattering cut for your hourglass or pear shape

LADIES SIZE	10	12	14	16	18	20	22	24	26
TO FIT WAIST (CM)	72	77	82	87	94	99	104	109	114
TO FIT HIP (CM)	101	106	111	116	123	128	133	138	143

CODE BS506L



*Stella*



#### Stella is the perfect pant for you if:

- You generally find most pants fit well in the hip and thigh
- You want your pant to fit neatly across the rear with some room through the leg
- Your waist to hip ratio is generally proportionate

LADIES SIZE	8	10	12	14	16	18	20
TO FIT WAIST (CM)	66	71	76	81	86	93	98
TO FIT HIP (CM)	94	99	104	109	114	121	126

CODE BS507L



*Kate*



#### Kate is the perfect pant for you if:

- You find pants fit at the waist but are too loose at the hip
- You have a slimmer thigh
- You have a petite or slender build

LADIES SIZE	4	6	8	10	12	14	16
TO FIT WAIST (CM)	57.5	60	65	70	75	80	85
TO FIT HIP (CM)	85	87.5	92.5	97.5	102.5	107.5	112.5



**BIZ COLLECTION**

[www.bizcollection.com.au](http://www.bizcollection.com.au)

[www.bizcollection.co.nz](http://www.bizcollection.co.nz)

None of the images in this catalogue may be reproduced without the written permission of the publisher. Colours are reproduced as closely as printing allows.